

**ADDENDUM NO. 4**

DATE 06/06/2022

To all Bidders on the Project titled: Life and Physical Science Building Abatement and Demolition Project

Reference Bid Documents dated 06/02/2022.

The attention of bidders submitting proposals for the above subject project is called to the following addendum to the Bid Docs. The items set forth herein, whether of omission, addition, substitution, or clarifications are all to be included in and form a part of the proposal submitted.

THE NUMBER OF THIS ADDENDUM ( 4 ) MUST BE ENTERED IN THE APPROPRIATE SPACE PROVIDED in the bid package.

**Addendum contents:**

**Building As Built Drawings –**

**Old Physical Science Building S Drawings – Package is typical for all buildings**

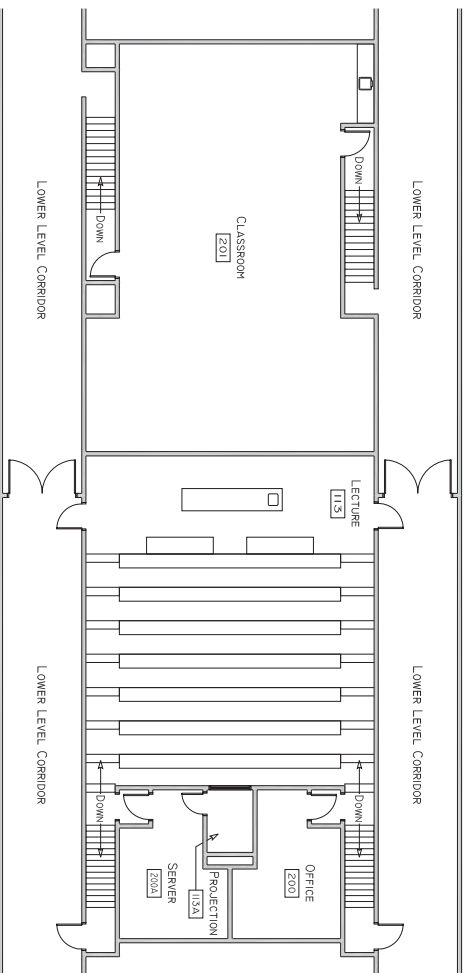
OldPhysicalScienceAsBuilts.pdf

All other portions of the Contract Documents remain unchanged.

Please be reminded to acknowledge this Addendum on the bid forms.

--- End of Addendum No. 4 ---

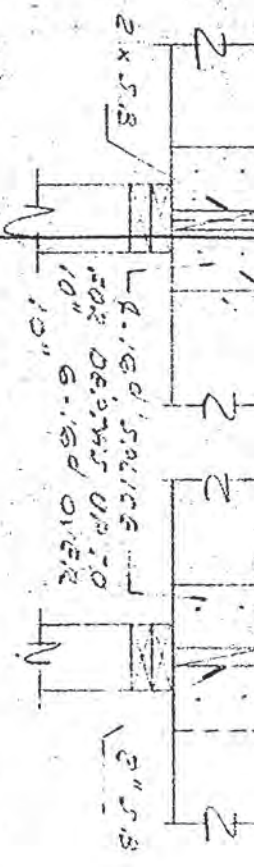
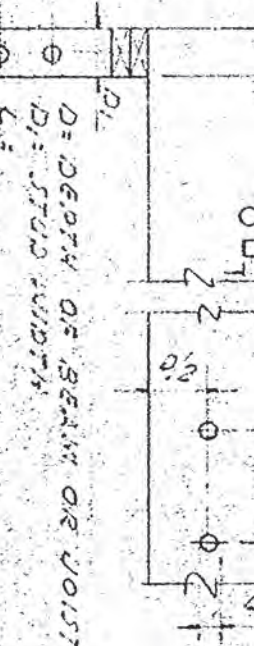








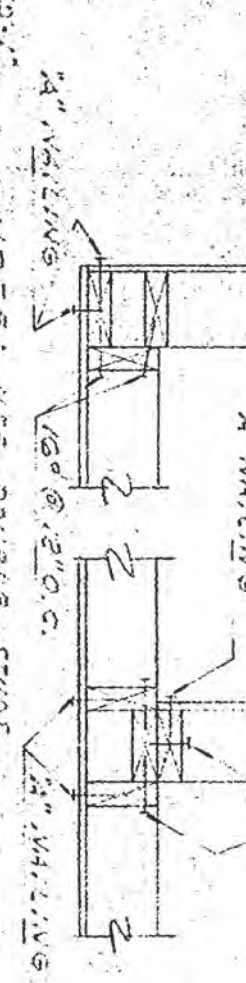
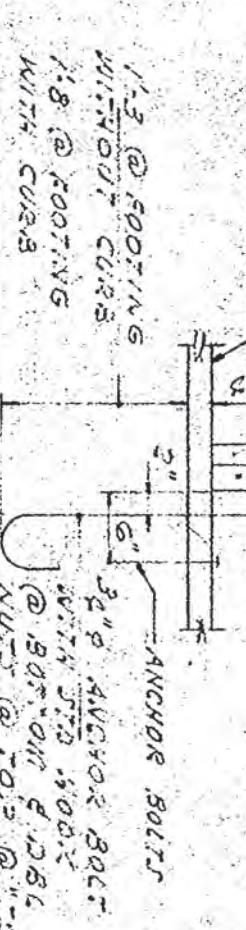
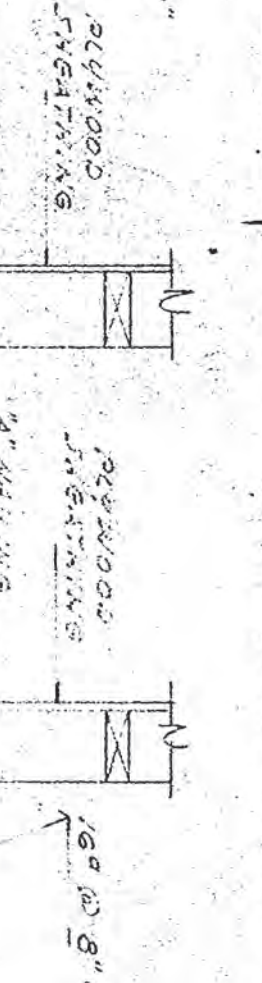
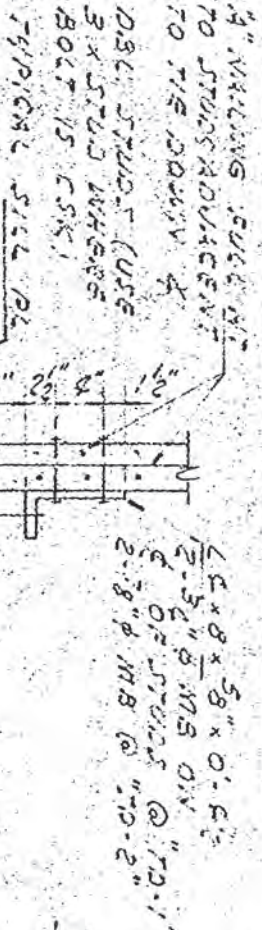
SPACING OF HOLES



HOLES & NOTCHES NOT PERMITTED FOR D > 2" OR LESS NOTCHING OF STUDS NOT PERMITTED

DETAILS OF BOLTS & NOTCHES IN JOISTS, BEAMS & STUDS

TYPICAL JOIST BOLT & LAMP SPACING



SHOWN "TD-1" OR "TD-2"

TYPICAL STUD WALL

TYPICAL 3\"/>

2-3 X STUDS 3\"/>

FULL HEIGHT TO BE STUD ADVANCEMENT TO THE DOWN

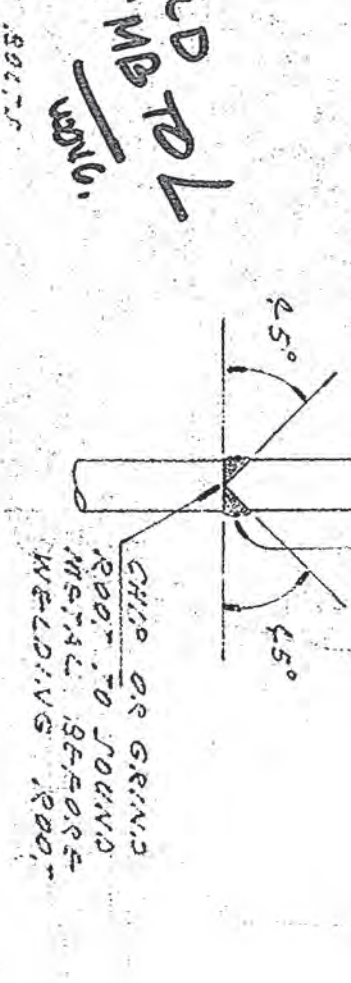
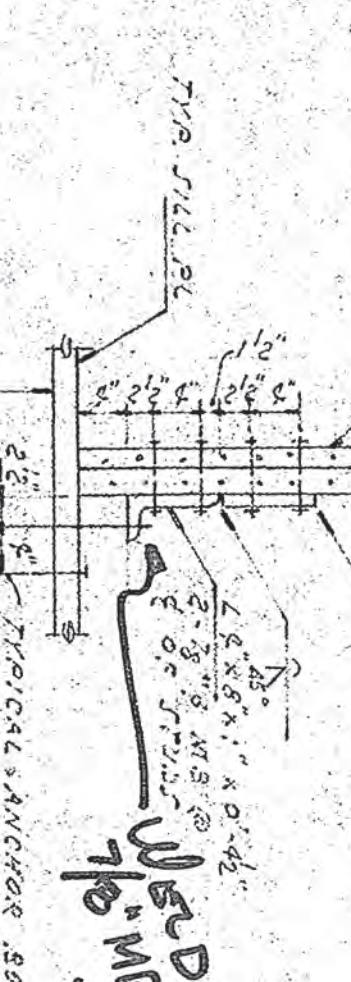
PL 4\"/>

PL 4\"/>

45°

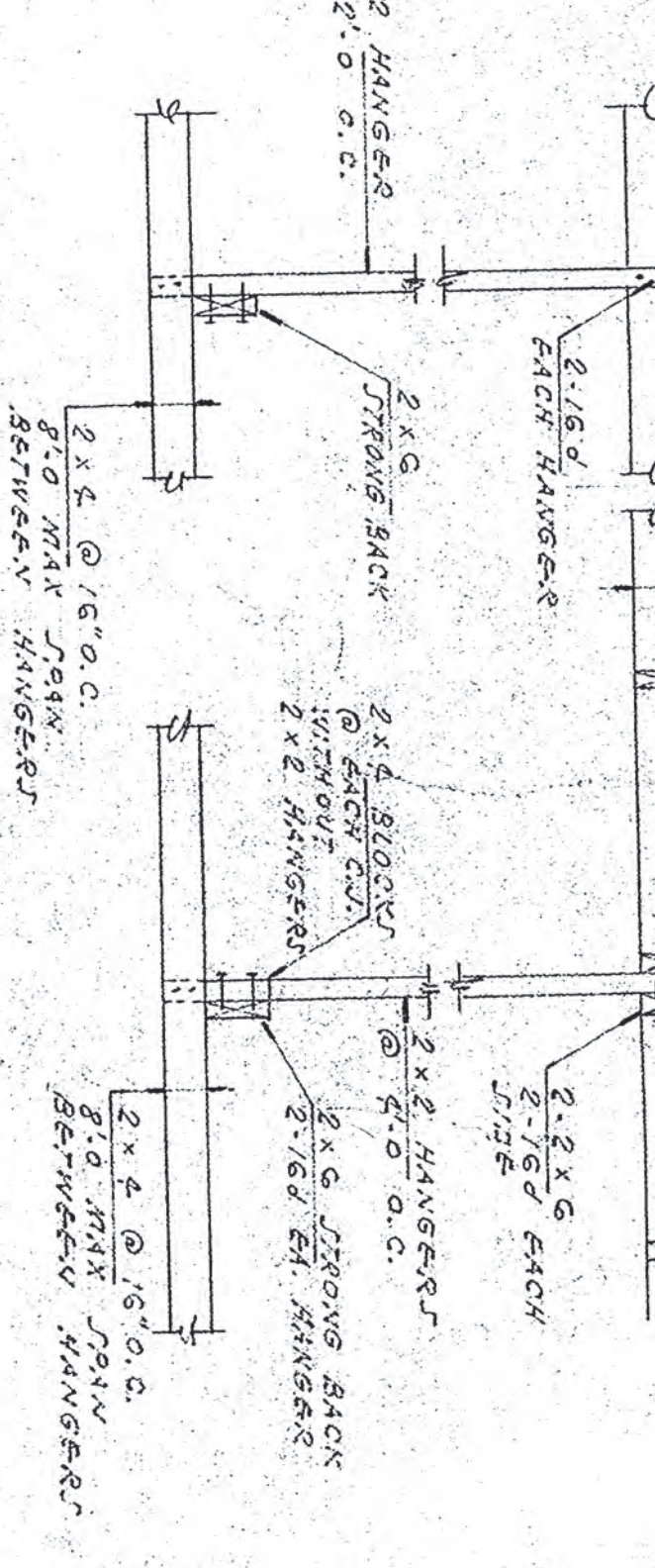
WELD

CHIP OR GRIND ROOT TO JOINT BEFORE WELDING ROOT



AMERICAN  
OR PLATE  
WELDER  
445-10  
KEMAS

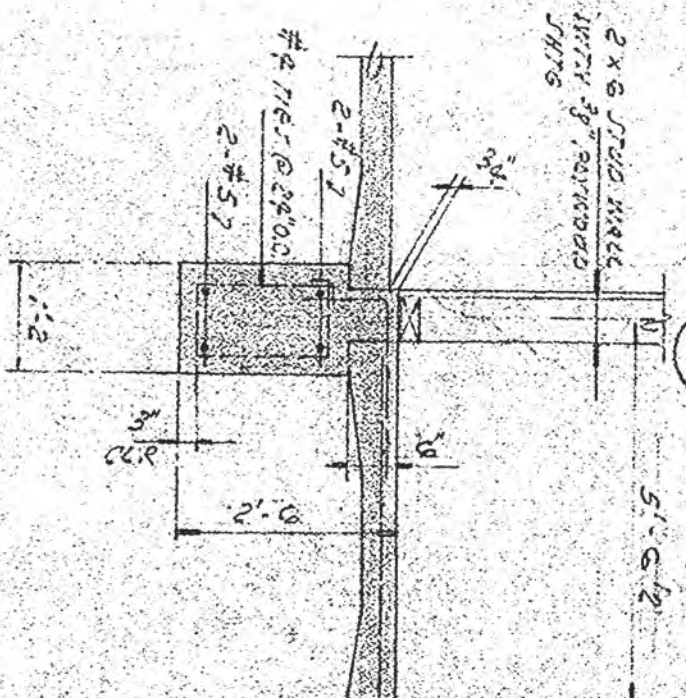




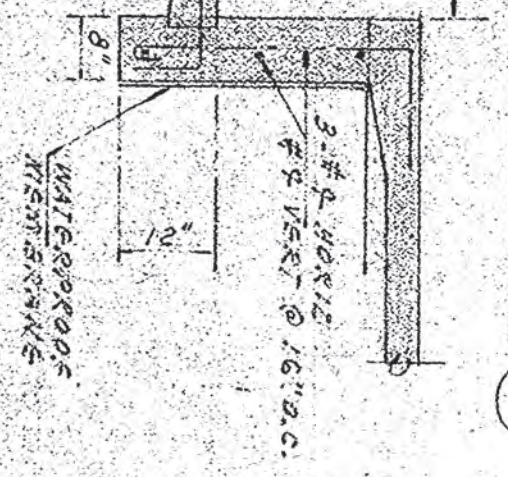
TYPICAL WOOD CEILING SUPPORT DETAIL



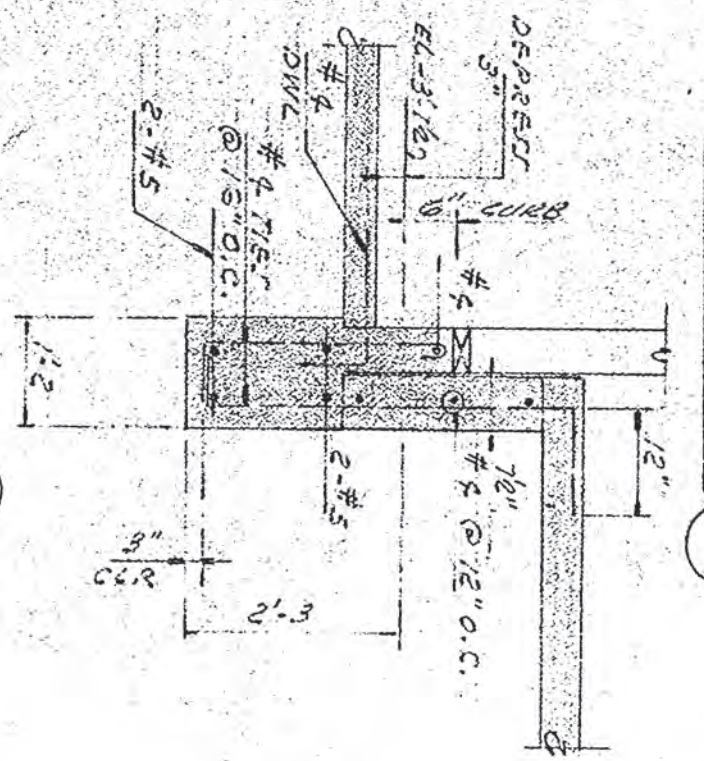
SECTION 310



SECTION 311



SECTION 312



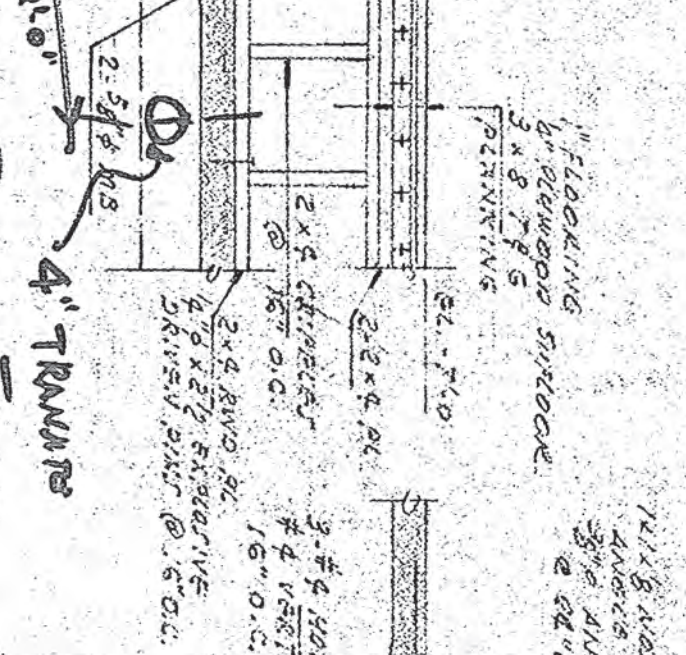
SECTION 318

SECTION 319

55

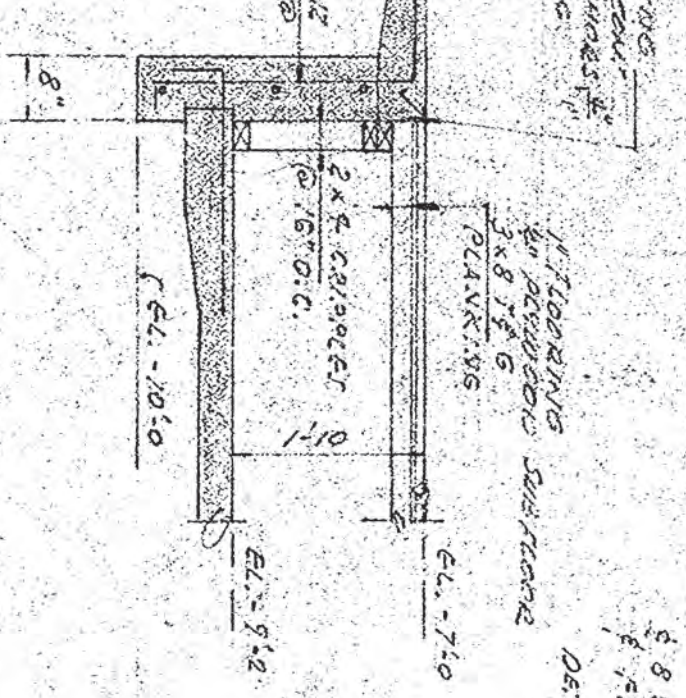


410



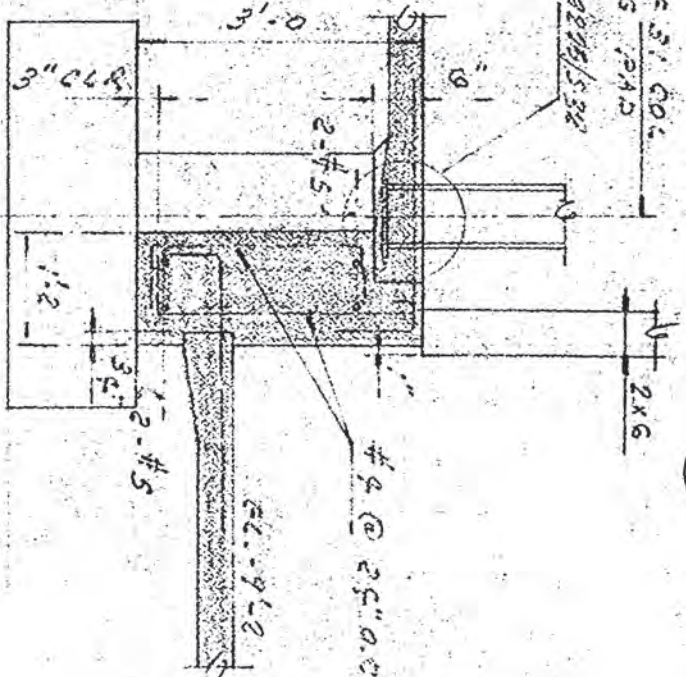
SECTION 410

411



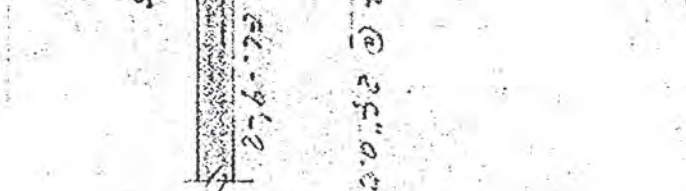
SECTION 411

412



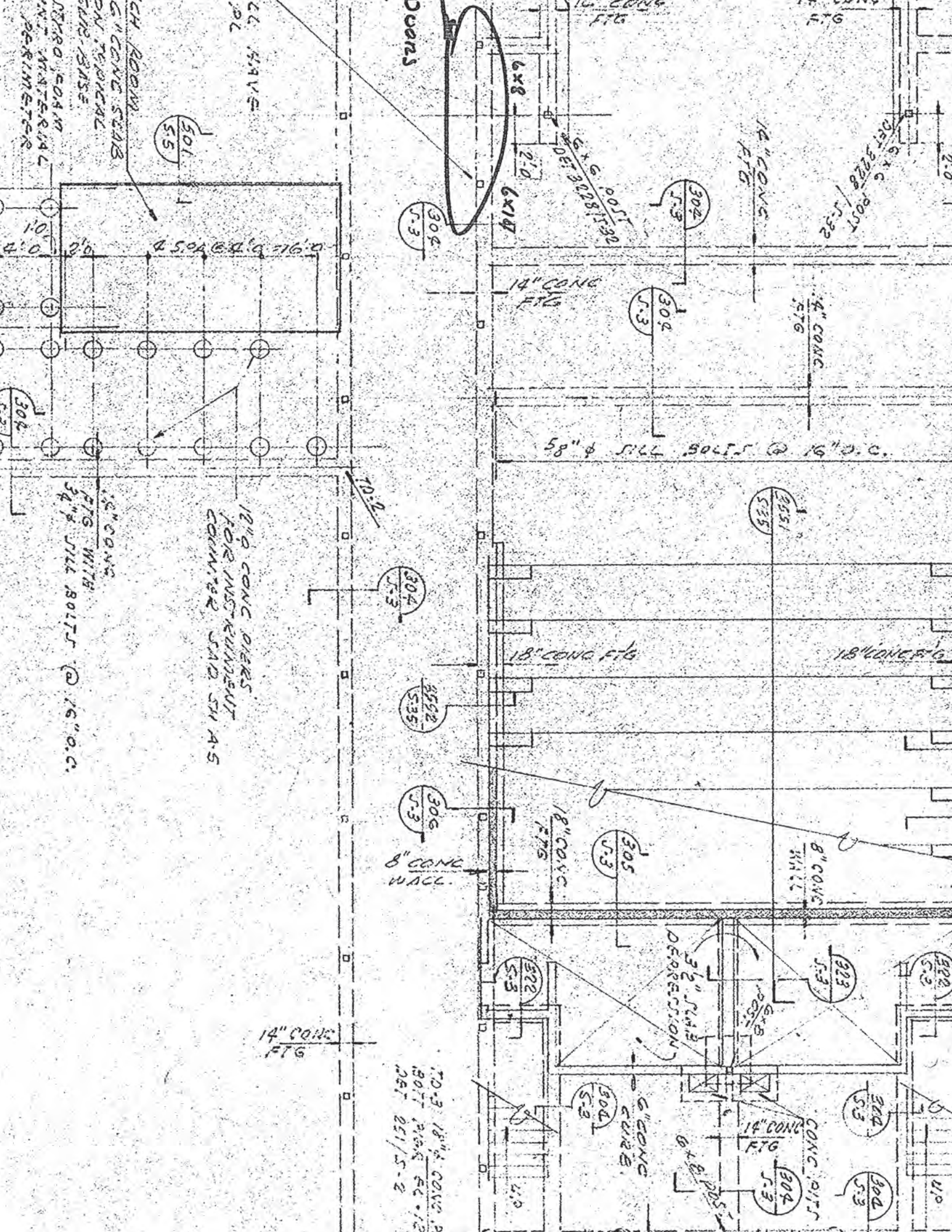
SECTION 412

413



SECTION 413





Duans

CL. 5.9V.5  
POL

CH ROOM  
CONCRETE SEAS  
ON MECHANICAL  
DRAINAGE  
PERIMETER

501  
5.5

6x8  
2:0  
6x14

6x6 POST  
DEF 2028/5-32

12" CONC  
FTG

6x6 POST  
DEF 2028/5-32

304  
J-3

302  
J-3

304  
J-3

4" CONC  
FTG

14" CONC  
FTG

58" φ SILL BOLTS @ 16" O.C.

551  
5.55

12" φ CONC PIERS  
FOR INSTRUMENT  
CORNER SMD S.M.A.S

18" CONC FTG

18" CONC FTG

10:0

304  
J-3

552  
5.55

306  
J-3

8" CONC  
WALL

18" CONC  
FTG

305  
J-3

8" CONC  
WALL

3 2" S.M.S  
DEPRESSION

323  
5.3

14" CONC  
FTG

10-3 18" φ CONC P  
BOLT 2028/5-2  
DEF 251/5-2

6" CONC  
CURB

14" CONC  
FTG

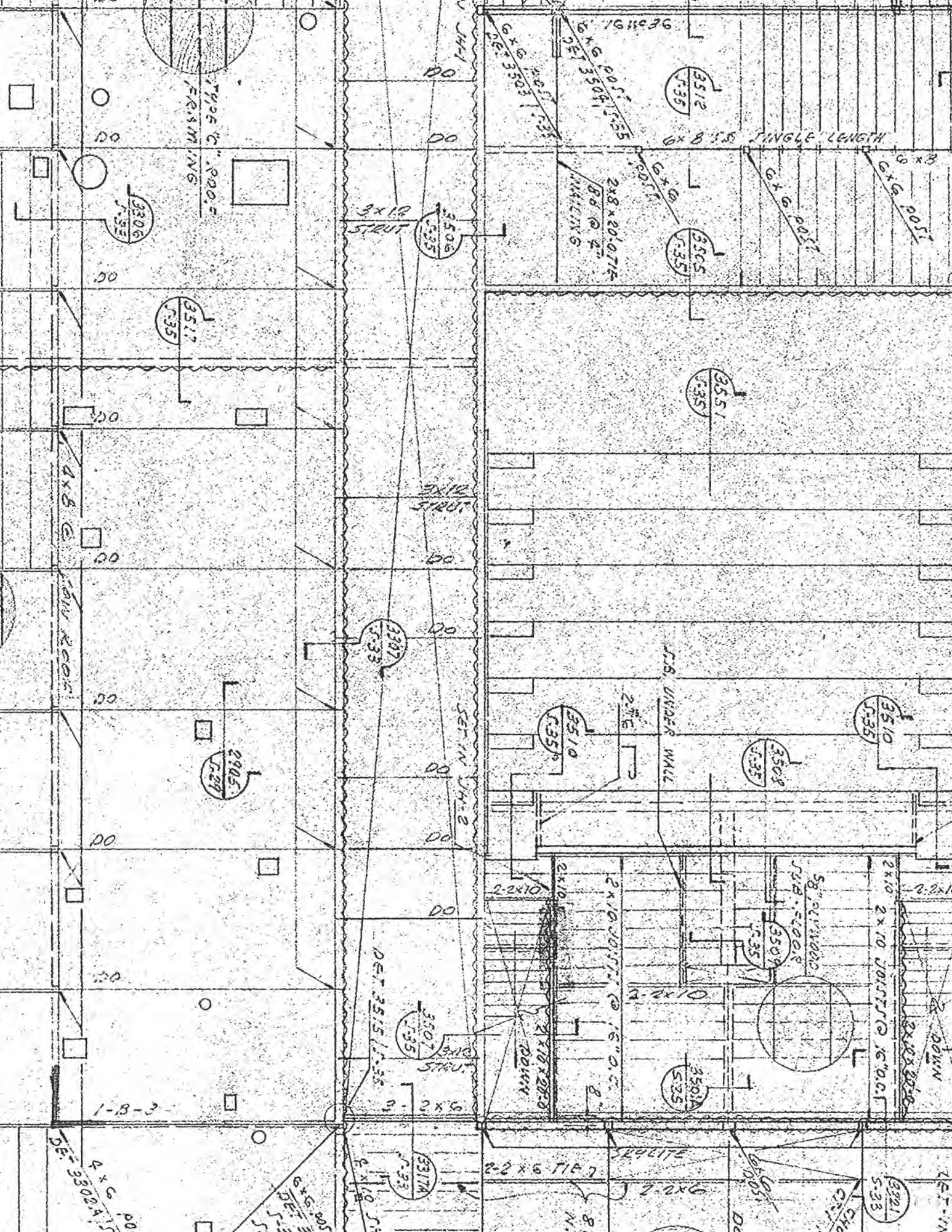
304  
J-3

324  
5.3

304  
J-3

U/P





TYPE C .000 =  
FRAMING

6x8 1.5 SINGLE LENGTH

3x12 STRUT

J.B. UNDER WALL

SET IN J.B.

1-B-3

DE: 3302.515  
4x6 POST

DE: 3305.000  
6x5 POST

DET 3515 1.35

2x6 TIE

DE: 3301.533  
2x10 JOIST

DO

DO

DO

DO

DO

DO

DO

DO

DO

DO

DO

DO

DO

DO

DO

DO

DO

DO

DO

DO

DO

DO

DO

3512  
1.35

3505  
1.35

3551  
1.35

3510  
1.35

3508  
1.35

3510  
1.35

3509  
1.35

3501A  
1.25

3507  
1.35

3317A  
1.33

3321  
1.33

3306  
1.33

3517  
1.35

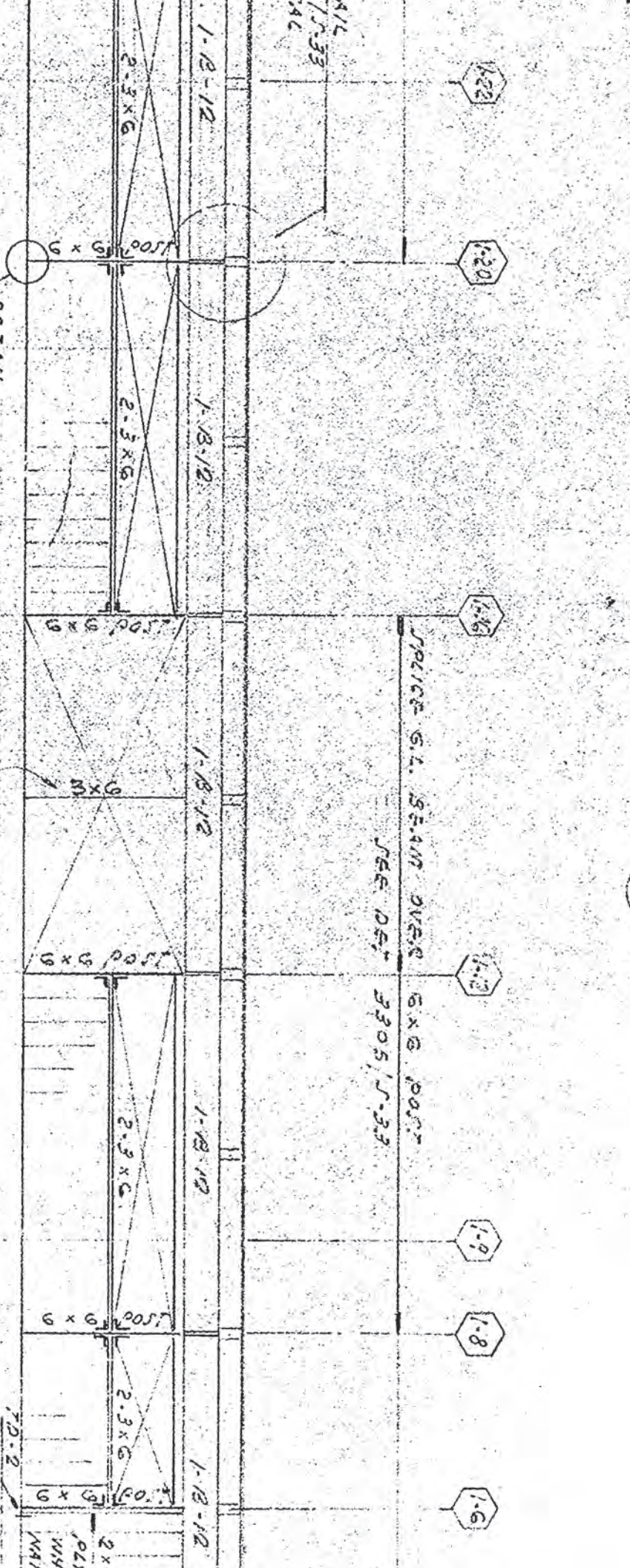
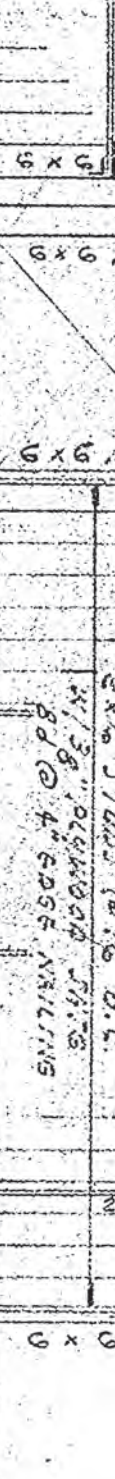
3905  
1.29

1-B-3



011-32

ELEVATION 902



DETAIL 3230/T-32 TYPICAL

SEE ELEV. 901 FOR DETAIL 415

SPICE S.L. SEAM OVER 6x8 POST SEE DET 3305/J-33

3x8 CONT WITH SPICES @ 1'-0, 1'-6 O.C.  
 PROVIDE 1 1/2" x 18 GA STRAP @ 6" O.C. LONG 204 @ 6" O.C. THRU PLANKING TO 3x8

1 1/2" x 18 GA STRAP @ 6" O.C. LONG @ 4" O.C. 3x8 @ 1'-8-12

SPICE DET 3328/J-33

GOLDEN

USE STR  
 THY PLA  
 ONI SH  
 OF S

LET

ELEV. 902



EL. 100.3

TC ANCHOR

2-16

2-18

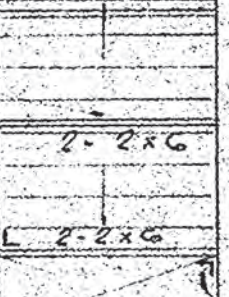
2-19

2-20

2-22

2-23

6x6 POST



2-1  
TYP TOP PL. BOIT  
LITE ANCHOR  
1-5/16"  
2-106 TOP NAILS  
OTHER SIDE

2x6 JOIST @ 16" O.C.  
WITH 3/8" PLYWOOD TRIS  
8d @ 6" EDGE NAILING  
5/16" ALL BOLTING (TYP U.N.C.)

2-8-23

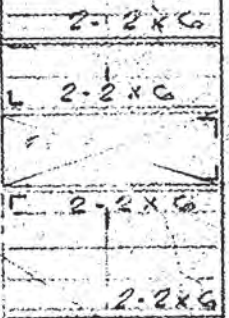
4x6

SPICE G.L. SEAM  
OVER 4x6 POST  
DET 3305/1-33

2-4

ELEVATION

1006



2-8-23

6x6 POST

2-4

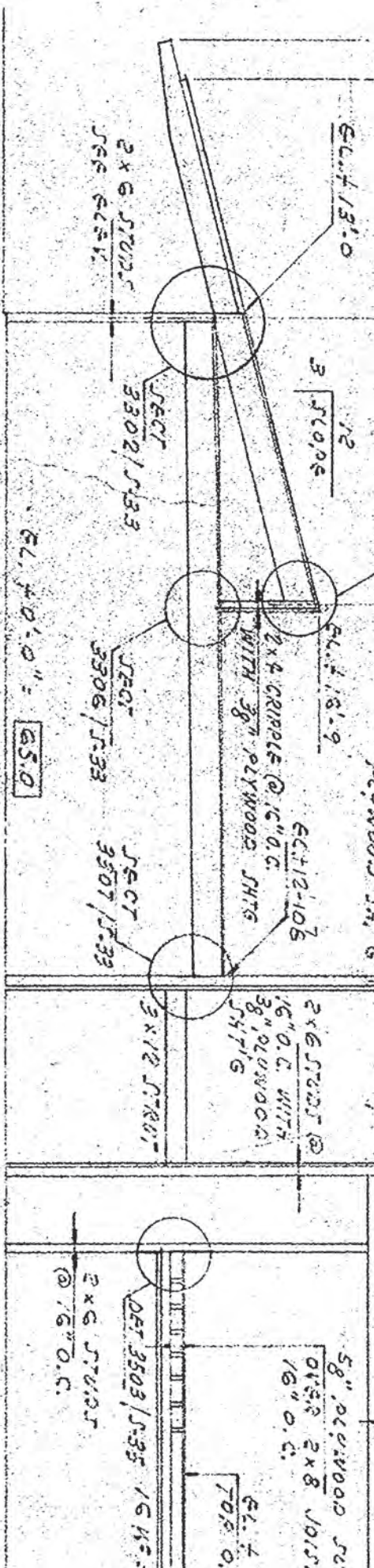
TD-3  
ELEV 1002/5.10

TD-3  
SEE NOTE 1  
ELEV 1002/5.10  
8'-0"

1010

DM





EL. +13'-0"

3  
12  
STRU

EL. +18'-9"

EL. +12'-10 1/2"

2x6 STRU @  
16" O.C. WITH  
3/8" PLYWOOD SHTG

5/8" PLYWOOD SHTG  
OVER 2x8 JOIST  
@ 16" O.C.

EL. +  
70'-0"

2x6 STRU  
J64 E451

JECT  
3302/J33

JECT  
3306/J33

JECT  
3307/J33

3x12 STRU

2x6 STRU  
@ 16" O.C.

DET 3503/J35 16 W.

EL. +0'-0" = 65.0

180'-0"

110'-0"

2'-0"

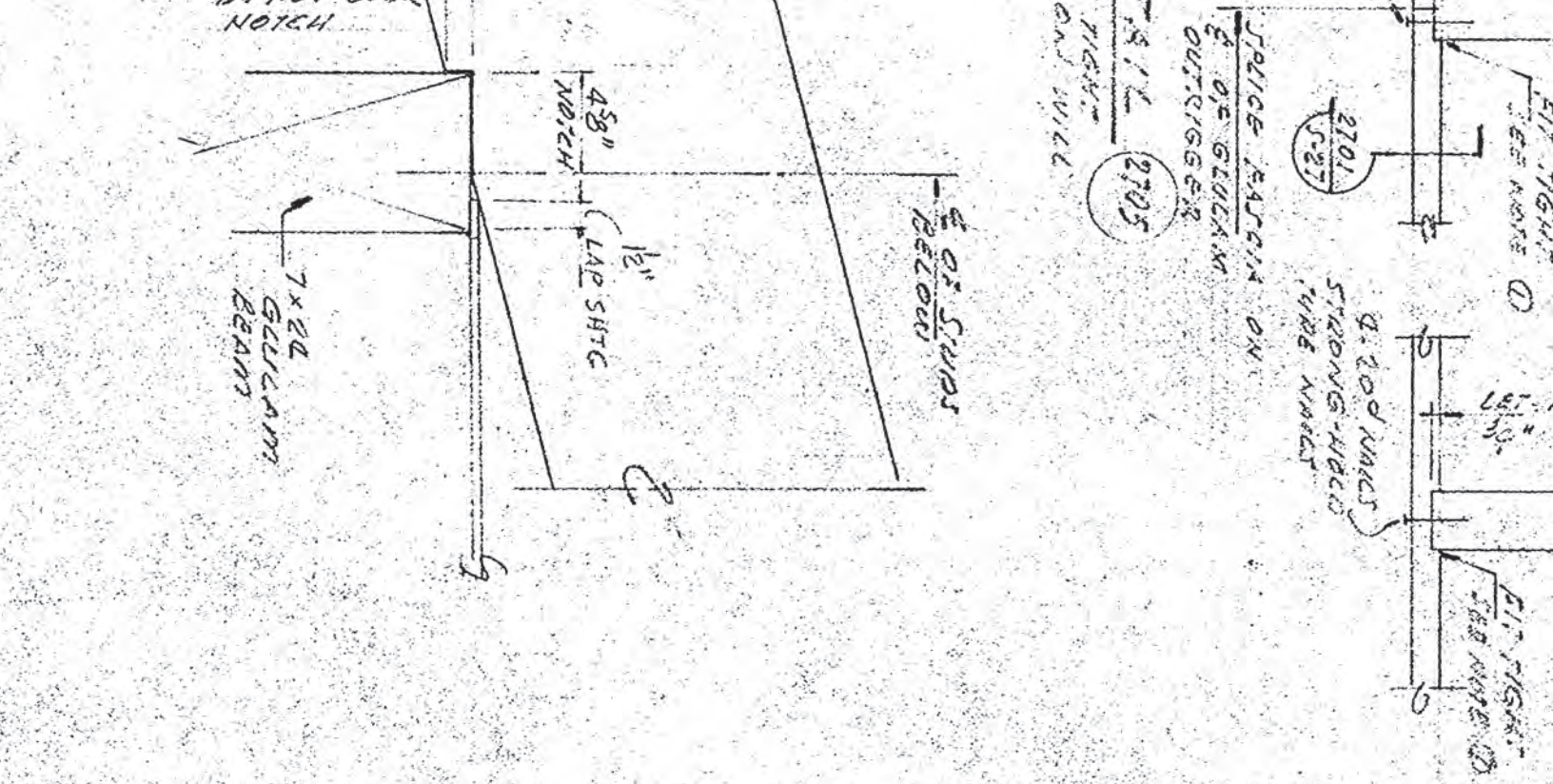
4 CRIPPLE

16" O.C. WITH  
PLYWOOD SHTG

1/2" PLYWOOD SHTG  
OVER 2x6 JOIST  
@ 24" O.C.

EL. +0'-0" = 65.0





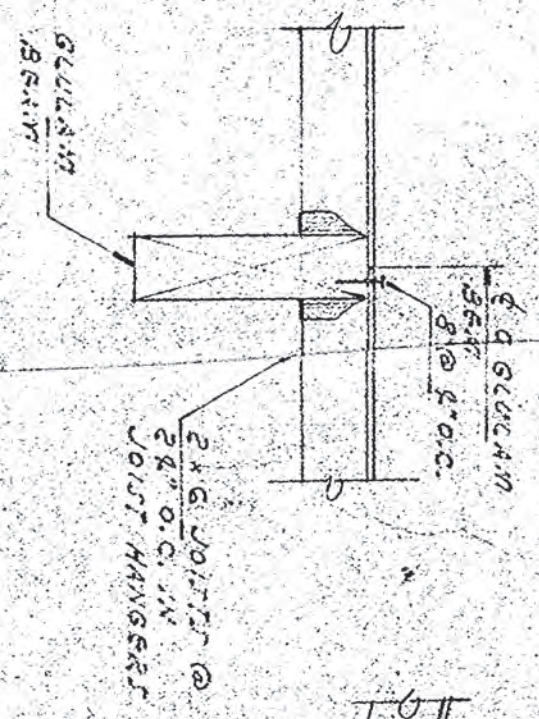
Q-B-8	5'4" x 14'5 8	38" U.P.	DET 3928 J-39	39
Q-B-9	5'4" x 19'2	3" 1/2 CAMBER 2 1/2" U.P.	DET 3809 J-38	39
Q-B-10	5'4" x 14'5 8	3" 1/2 CAMBER 78" U.P.	DET 3806 J-38	39
Q-B-11	5'4" x 14'5 8	3" 1/2 CAMBER 12" U.P.	DET 3805 J-38	39
Q-B-12	9' x 19'2	3" 1/2 CAMBER 134" U.P.	DET 3807 J-38	39
Q-B-13	5'4" x 16'4	3" 1/2 CAMBER	DET 3911 J-39	39
Q-B-14	7' x 26	DET EXT COL DET INT COL DET 4054 J-40	DET 4054 J-40	40
Q-B-15	7' x 30'8	3" 1/2 CAMBER 5'6" U.P. @ CENTER JOIN ONLY	DET 3978 J-39	39
Q-B-16	7' x 22'3	3" 1/2 CAMBER 1 1/2" U.P. @ DET 3919 J-39 @ Q OF LONG JOIN ONLY	DET 3921 J-39	39



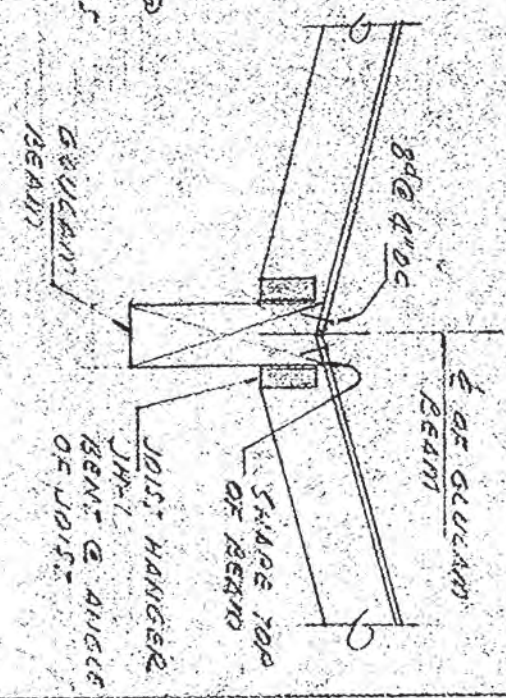




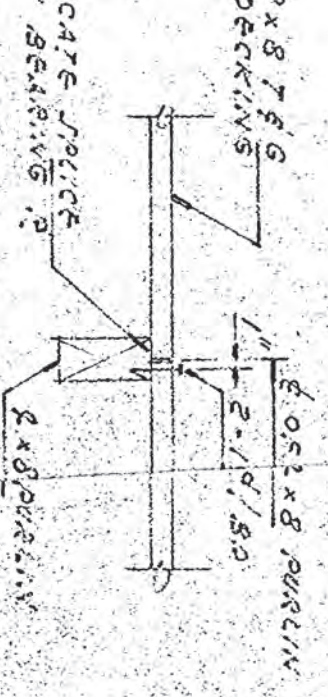
SECTION 2903  
TYPE B



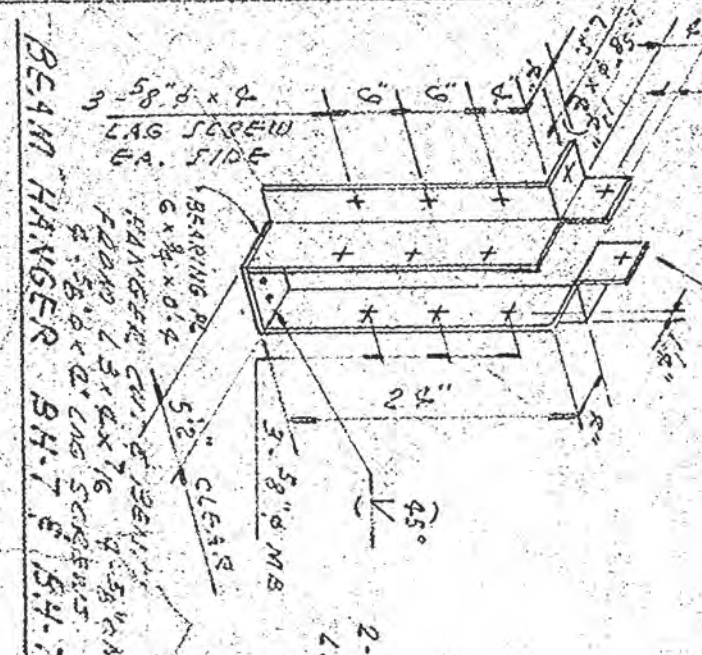
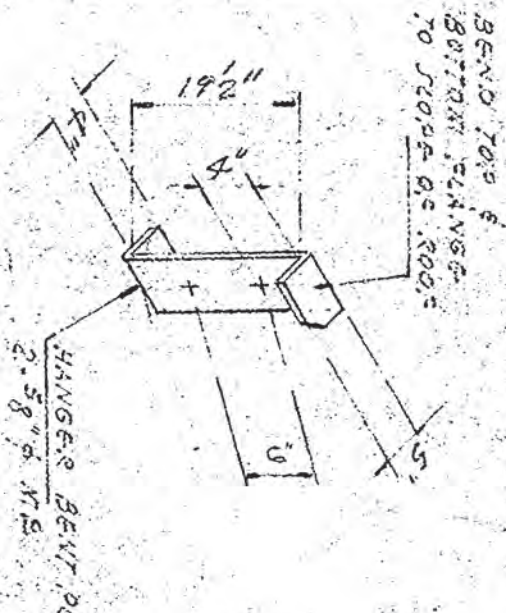
SECTION 2904  
TYPE B



SECTION 2905  
TYPE C



SECTION 2910  
TYPE C



BEAM HANGER BH-7

2x8 x 1/4  
2x8 x 1/4











DET 3622/J-36  
DET 39224/J-32

DET 3604/J-36  
DET 3222/J-32

DET 3605/J-36  
DET 3222/J-32

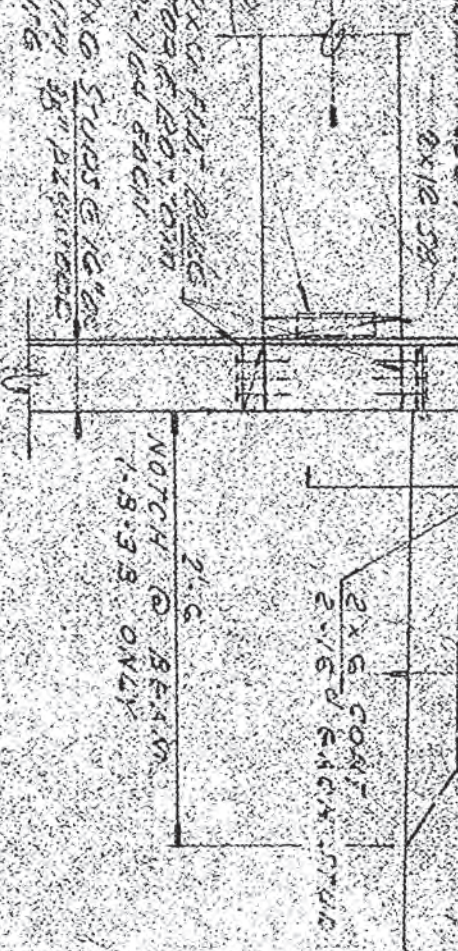
DET 3918/J-39  
DET 3919/J-39  
DET 3226/J-32

DET 3923  
DET 4064  
DET 4066  
DET 3222

2-43  
43712 6

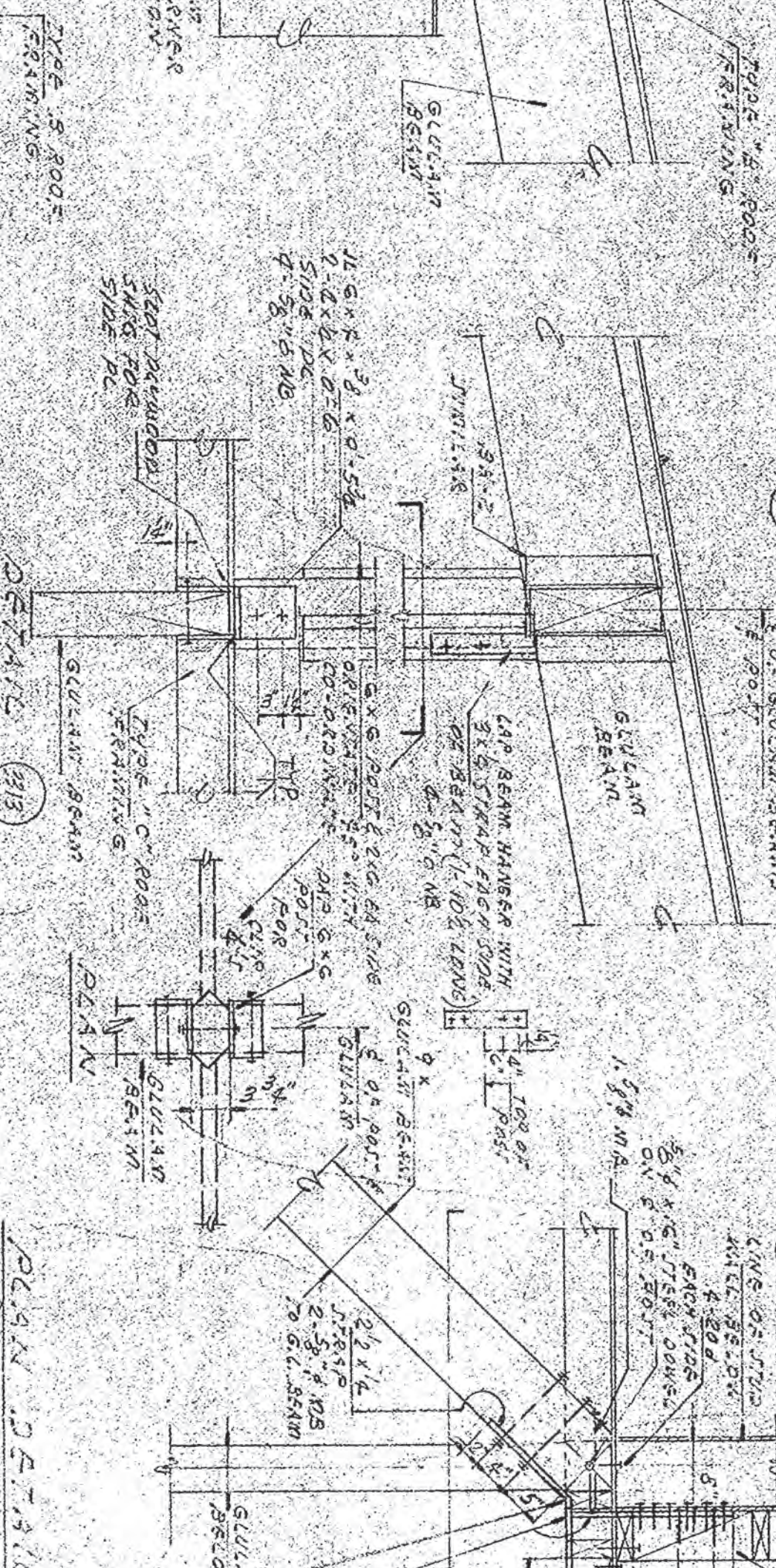
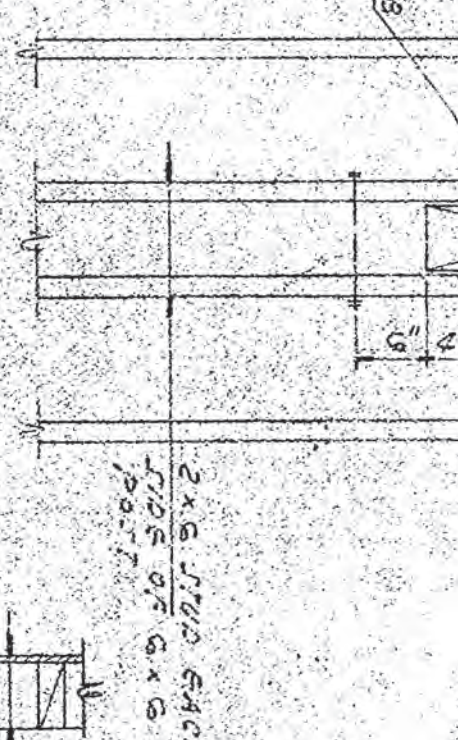
2-8" p MS 3/2 x 1/2 PL  
TO PORT CRK @ 151





SECTION 3307

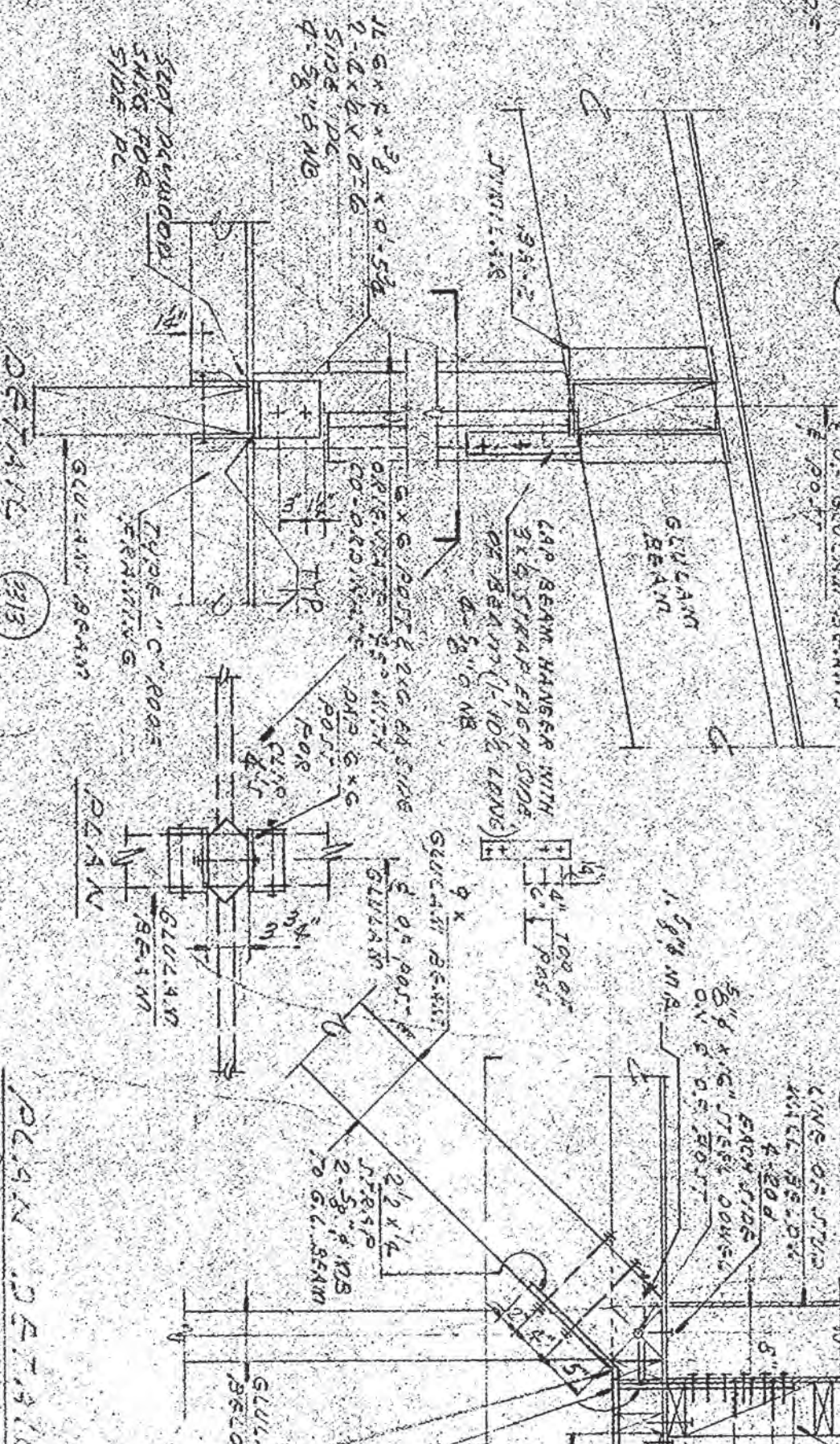
DETAIL 3308



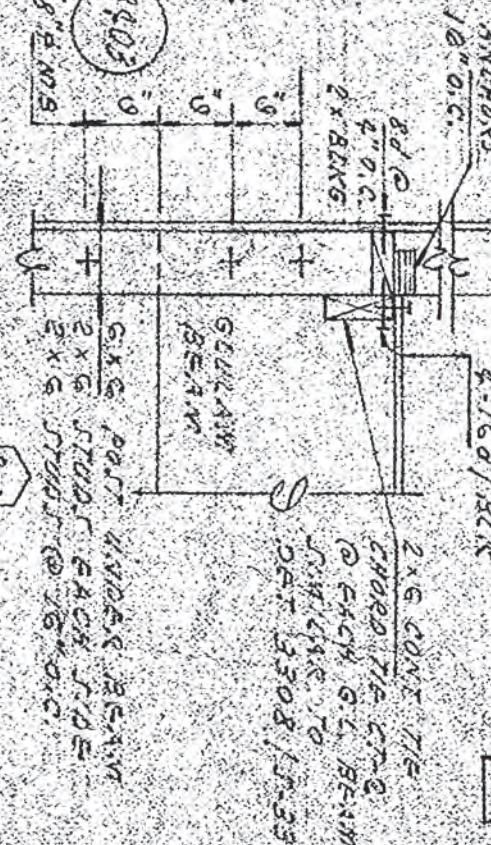
TYPE 3 ROOF FRAMING

DETAIL 3313

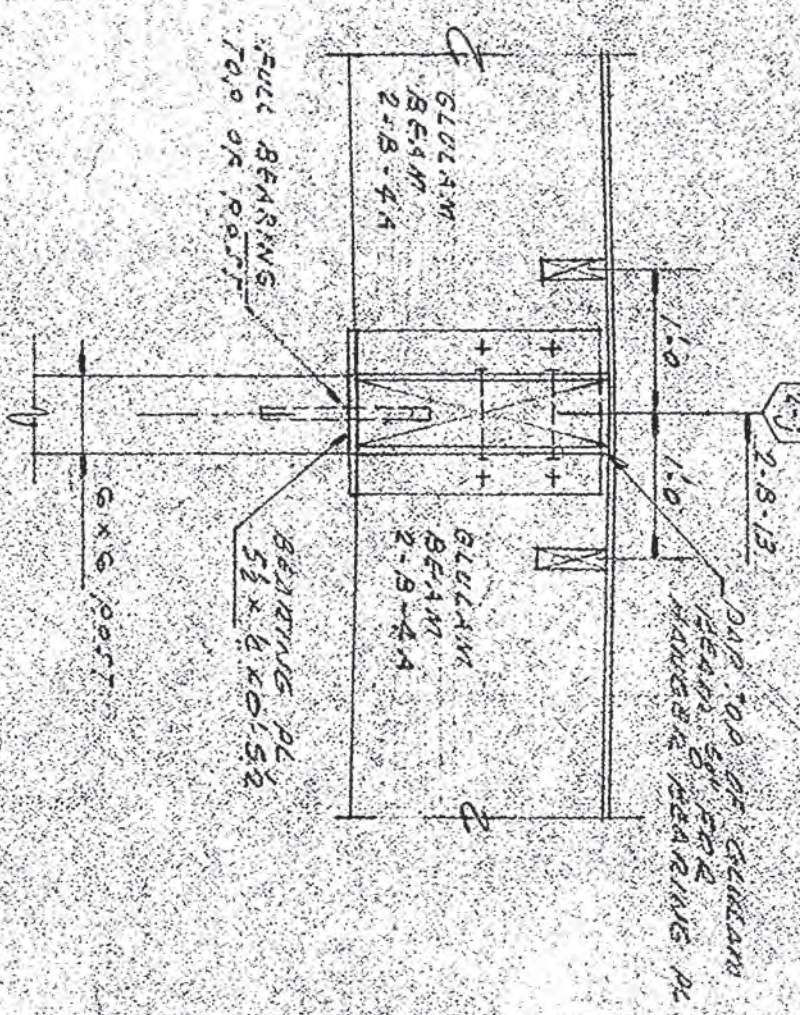
DETAIL 3314



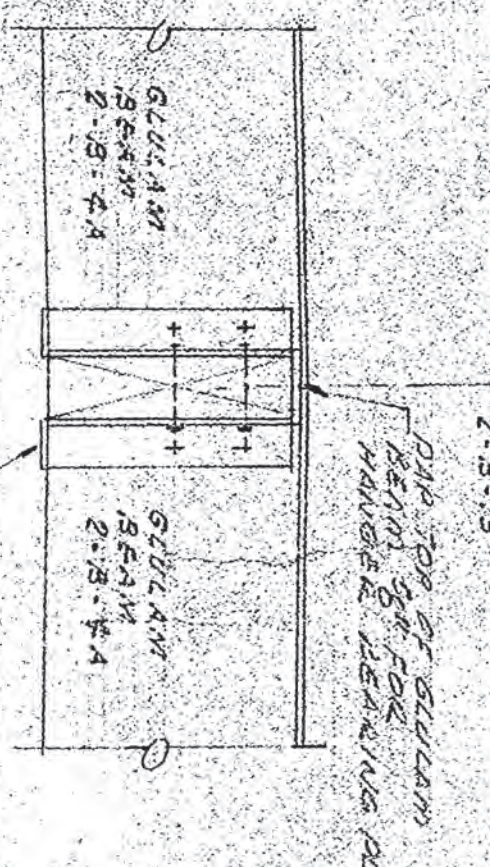




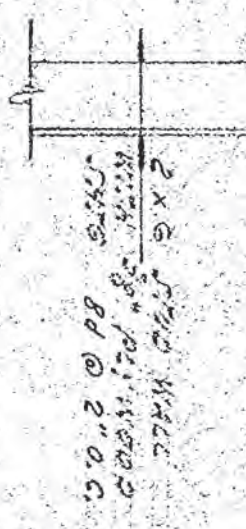
SECTION 3108



DETAIL 3110



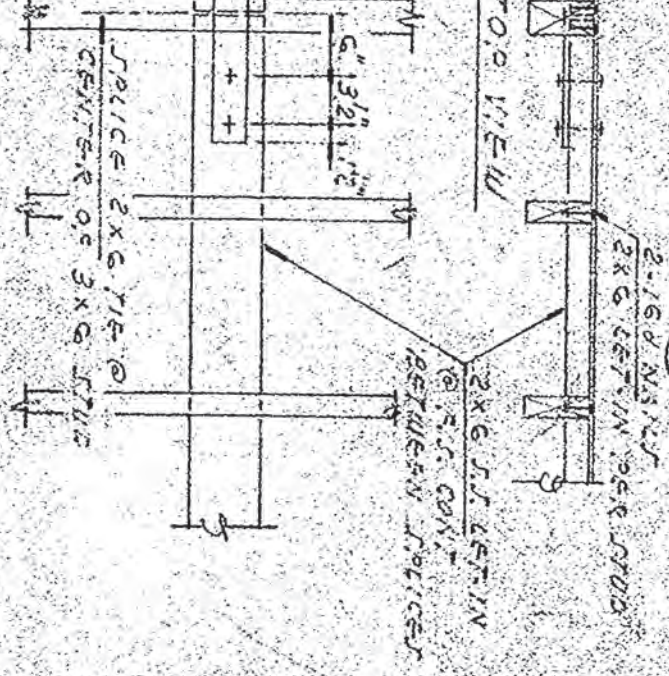
DETAIL 3111





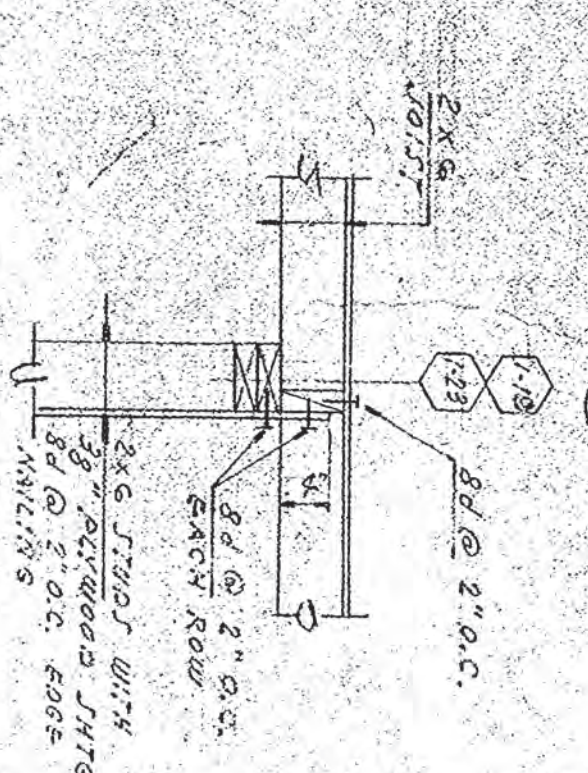
SECTION

3509



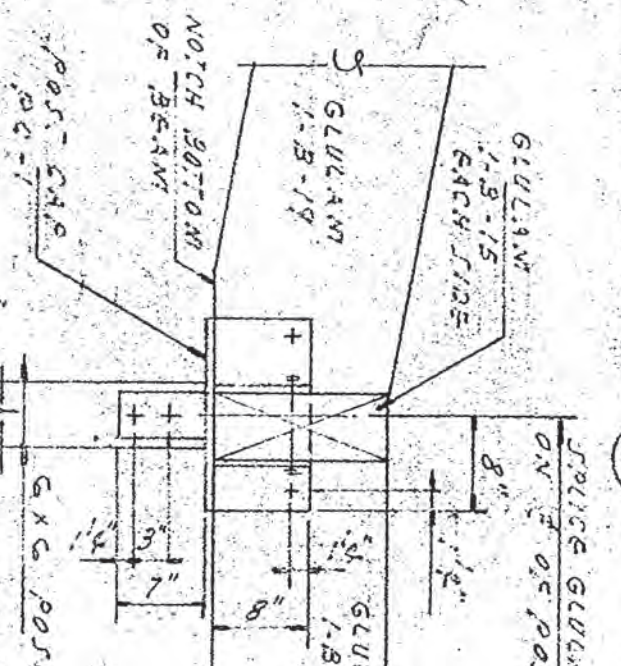
SECTION

3510



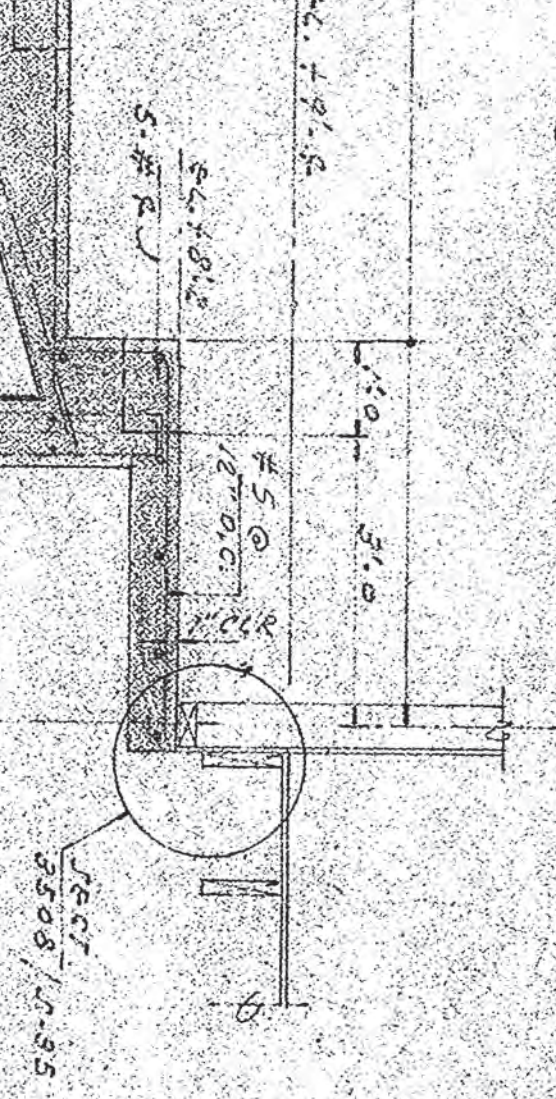
SECTION

3511



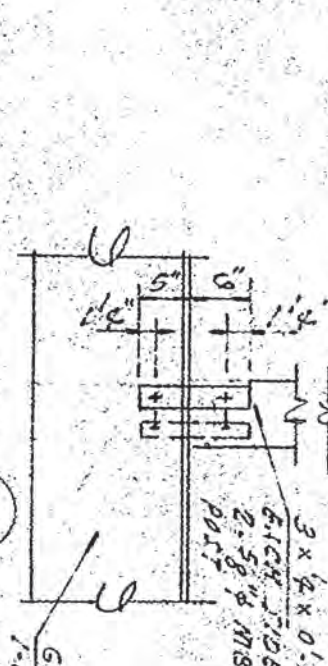
DETAIL

3517

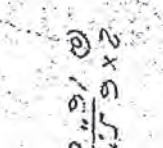
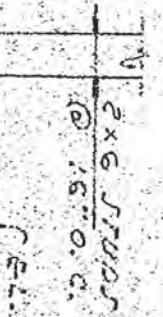


DETAIL

3518



NOTE:  
FOR DET. 3511 &  
3512  
CHORE WALLS









HALL (122)

RG 46x10 1900 CFM EA

OK

NOMEN (126) DEPT HEAD (129)

RG 46x10-NF 1000 CFM

23x48 PENTHOUSE FIVE COMB. AIR  
36x48x57" HIGH COMB. AIR PENT-  
HOUSE; PENNHOUSE CE EQUAL

18x48 DUCT DN. TO 4" ABOVE FLR  
18x18 GRILLS AT CEILING

RG 46x10-NF 1000 CFM

CORRIDOR (136)

3-74x5/2 UL UP

4-BALANCED AIR FUME  
HOODS SUPPLY AIR CONN. 15x16"  
EXHAUST AIR CONN. 12" 4"

MECH RM (156)

INST RM (159)

CHEMIST (14)

HV-EM (14)

PRE P.M.D (12x8)

EE-G

EE-E

EE-S

EE-9

INSTRUMENT RM (160)

INSTRUMENT RM (160)

INSTRUMENT RM (160)

INSTRUMENT RM (160)

INSTRUMENT RM

4-CD-12x12 (40)  
500 CFM EA

EWH-15

FLAK (139)

EWH-14

44x5/2 UL UP

18x18

14x8

12x6

9x6

16x14

24x20 120H PLENUM

140 RET. PLENUM

124 RET. PLENUM

14x8

14x8

14x8

RG-1240 NF 250 CFM

12x14 IFC

12x8

12x8

12x8

12x8

12x8

12x8

12x8

12x8

12x8

12x8

12x8

RG-1240 NF 250 CFM

12x14 IFC

12x8

12x8

12x8

12x8

12x8

12x8

12x8

12x8

12x8

12x8

12x8

RG-1240 NF 250 CFM

12x14 IFC

12x8

12x8

12x8

12x8

12x8

12x8

12x8

12x8

12x8

12x8

12x8

RG-1240 NF 250 CFM

12x14 IFC

12x8

12x8

12x8

12x8

12x8

12x8

12x8

12x8

12x8

12x8

12x8

RG-1240 NF 250 CFM

12x14 IFC

12x8

12x8

12x8

12x8

12x8

12x8

12x8

12x8

12x8

12x8

12x8

RG-1240 NF 250 CFM

12x14 IFC

12x8

12x8

12x8

12x8

12x8

12x8

12x8

12x8

12x8

12x8

12x8

RG-1240 NF 250 CFM

12x14 IFC

12x8

12x8

12x8

12x8

12x8

12x8

12x8

12x8

12x8

12x8

12x8

RG-1240 NF 250 CFM

12x14 IFC

12x8

12x8

12x8

12x8

12x8

12x8

12x8

12x8

12x8

12x8

12x8

RG-1240 NF 250 CFM

12x14 IFC

12x8

12x8

12x8

12x8

12x8

12x8

12x8

12x8

12x8

12x8

12x8

RG-1240 NF 250 CFM

12x14 IFC

12x8

12x8

12x8

12x8

12x8

12x8

12x8

12x8

12x8

12x8

12x8

RG-1240 NF 250 CFM

12x14 IFC

12x8

12x8

12x8

12x8

12x8

12x8

12x8

12x8

12x8

12x8

12x8

RG-1240 NF 250 CFM

12x14 IFC

12x8

12x8

12x8

12x8

12x8

12x8

12x8

12x8

12x8

12x8

12x8

RG-1240 NF 250 CFM

12x14 IFC

12x8

12x8

12x8

12x8

12x8

12x8

12x8

12x8

12x8

12x8

12x8

RG-1240 NF 250 CFM

12x14 IFC

12x8

12x8

12x8

12x8

12x8

12x8

12x8

12x8

12x8

12x8

12x8

RG-1240 NF 250 CFM

12x14 IFC

12x8

12x8

12x8

12x8

12x8

12x8

12x8

12x8

12x8

12x8

12x8

RG-1240 NF 250 CFM

12x14 IFC

12x8

12x8

12x8

12x8

12x8

12x8

12x8

12x8

12x8

12x8

12x8

RG-1240 NF 250 CFM

12x14 IFC

12x8

12x8

12x8

12x8

12x8

12x8

12x8

12x8

12x8

12x8

12x8

RG-1240 NF 250 CFM

12x14 IFC

12x8

12x8

12x8

12x8

12x8

12x8

12x8

12x8

12x8

12x8

12x8

RG-1240 NF 250 CFM

12x14 IFC

12x8

12x8

12x8

12x8

12x8

12x8

12x8

12x8

12x8

12x8

12x8

RG-1240 NF 250 CFM

12x14 IFC

12x8

12x8

12x8

12x8

12x8

12x8

12x8

12x8

12x8

12x8

12x8

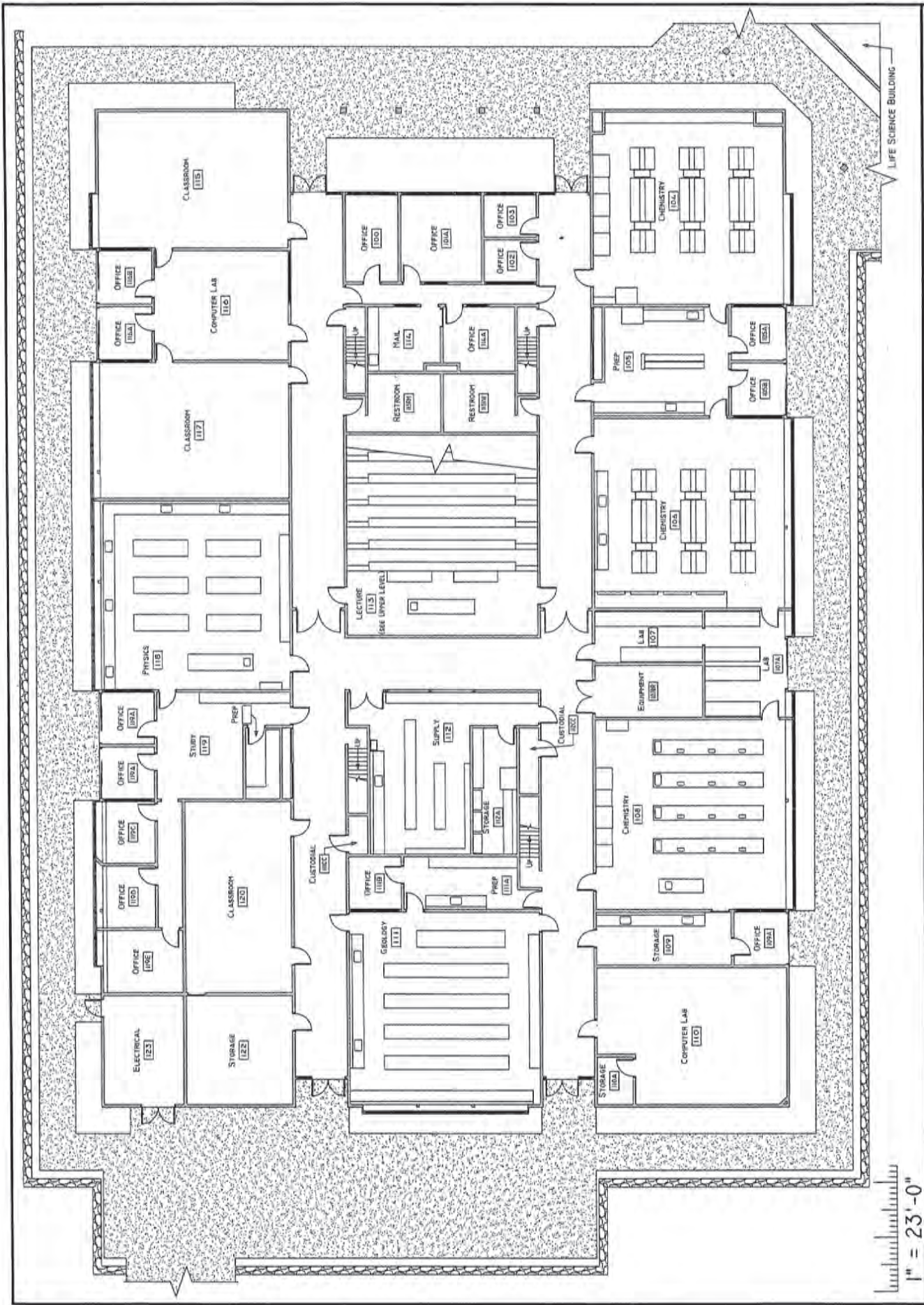
RG-1240 NF 250 CFM

12x14 IFC







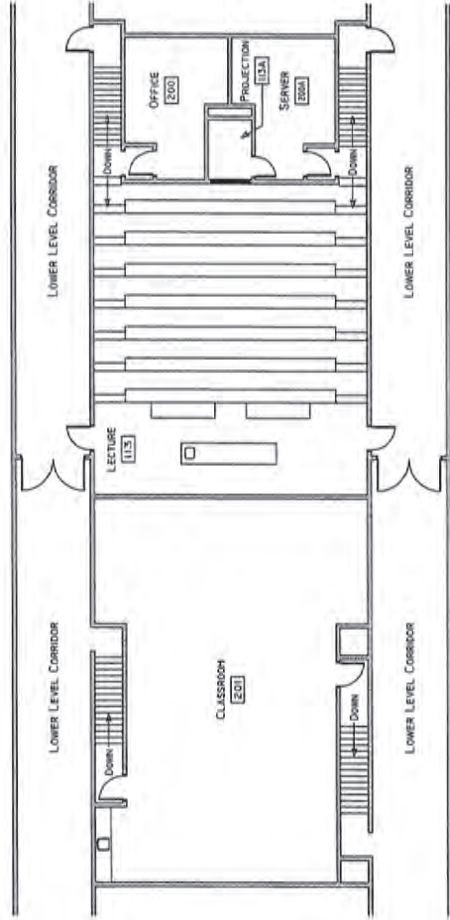


1" = 23'-0"

REDWOODS COMMUNITY COLLEGE DISTRICT  
 REVISED FRI 27 JUN 2008

COLLEGE OF THE REDWOODS - EUREKA CAMPUS  
 PHYSICAL SCIENCE BUILDING - LOWER LEVEL





1" = 23'-0"

COLLEGE OF THE REDWOODS - EUREKA CAMPUS  
 PHYSICAL SCIENCE BUILDING - UPPER LEVEL

REDWOODS COMMUNITY COLLEGE DISTRICT  
 REVISED FRI 27 JUN 2008



[Add] [Edit] [Delete]

Show:  Unclassified  Non-assignable

<u>Prfx.</u>	<u>Rm No.</u>	<u>Sufx.</u>	<u>Room Use#</u>	<u>Room Use</u>	<u>Top/CSS #</u>	<u>Top/CSS Description</u>	<u>Assgn. Station</u>	<u>Assgn. Sq. Ft.</u>	<u>Dept No.</u>	<u>Program Code</u>	<u>Status</u>
PS	100		310	Office	0099	General Assignment	1	153	11	General Administrative Services	A
PS	101		310	Office	0099	General Assignment	1	200	11	General Academic Instruction	A
PS	102		310	Office	1701	Mathematics, General	1	74	19	General Academic Instruction	A
PS	103		310	Office	1701	Mathematics, General	1	75	19	General Academic Instruction	A
PS	104		210	Class Lab	1905	Chemistry, General	24	1,189	25	General Academic Instruction	A
PS	105		410	Read/Study Room	1905	Chemistry, General	10	437	25	General Academic Instruction	A
PS	105 A		310	Office	1905	Chemistry, General	1	92	25	General Academic Instruction	A
PS	105 B		310	Office	1905	Chemistry, General	1	92	25	General Academic Instruction	A
PS	106		210	Class Lab	1905	Chemistry, General	24	1,200	25	General Academic Instruction	A
PS	107		255	Non-Class Lab Service	1905	Chemistry, General	0	182	25	General Academic Instruction	A
PS	107 A		250	Non-Class Lab	1905	Chemistry, General	0	280	19	General Academic Instruction	A
PS	108		210	Class Lab	1905	Chemistry, General	25	1,184	25	General Academic Instruction	A
PS	109		215	Class Lab Service	1905	Chemistry, General	0	221	25	General Academic Instruction	A
PS	109 A		310	Office	1905	Chemistry, General	1	92	25	General Academic Instruction	A
PS	110		210	Class Lab	1301	Family and Consumer Science, General	40	780	42	General Academic Instruction	A
PS	110 A		310	Office	1701	Mathematics, General	1	57	42	General Academic Instruction	A
PS	111		210	Class Lab	1914	Geology	33	1,188	22	General Academic Instruction	A
PS	111 A		215	Class Lab Service	1914	Geology	0	190	22	General Academic Instruction	A
PS	111 B		310	Office	1914	Geology	1	88	22	General Academic Instruction	A
PS	112		215	Class Lab Service	1905	Chemistry, General	0	626	23	General Academic Instruction	A
PS	112 A		215	Class Lab Service	1905	Chemistry, General	0	180	23	General Academic Instruction	A
PS	113		110	Classroom	0099	General Assignment	95	1,343	23	General Academic Instruction	A
PS	113 A		215	Class Lab Service	1901	Physical Sciences, General	0	32	23	General Academic Instruction	A
PS	114		310	Office	6010	Academic Administration	1	147	23	Academic Administration and Personnel Development	A
PS	114 A		310	Office	6010	Academic Administration	1	146	23	Academic Administration and Personnel Development	A
PS	115		110	Classroom	0099	General Assignment	41	843	19	General Academic Instruction	A



PS 116	210	Class Lab	1701	Mathematics, General	8	485	19	General Academic Instruction	A
PS 116 A	310	Office	1701	Mathematics, General	1	91	19	General Academic Instruction	A
PS 116 B	310	Office	1701	Mathematics, General	1	92	19	General Academic Instruction	A
PS 117	110	Classroom	0099	General Assignment	41	834	19	General Academic Instruction	A
PS 118	210	Class Lab	1902	Physics, General	19	1,185	20	General Academic Instruction	A
PS 119	410	Read/Study Room	1902	Physics, General	15	365	20	General Academic Instruction	A
PS 119 A	310	Office	1902	Physics, General	1	90	20	General Academic Instruction	A
PS 119 B	310	Office	1902	Physics, General	1	90	20	General Academic Instruction	A
PS 119 C	310	Office	1902	Physics, General	1	97	19	General Academic Instruction	A
PS 119 D	310	Office	1902	Physics, General	1	97	19	General Academic Instruction	A
PS 119 E	310	Office	0099	General Assignment	1	168	11	General Academic Instruction	A
PS 119 F	730	Storage	0099	General Assignment	0	81	11	General Academic Instruction	A
PS 120	210	Class Lab	1902	Physics, General	32	677	20	General Academic Instruction	A
PS 122	310	Office	1911	Astronomy	10	381	22	General Academic Instruction	A
PS 200	310	Office	1701	Mathematics, General	2	197	22	General Academic Instruction	A
PS 200 A	315	Office Service	1701	Mathematics, General	3	198	31	General Academic Instruction	A
PS 201	110	Classroom	0099	General Assignment	55	1,400	42	General Academic Instruction	A
PS 201 S	115	Classroom Service	1901	Physical Sciences, General	0	55	11	General Academic Instruction	A