

Substantive Change Application

Distance Education – 50% of Students or Courses

Directions: Complete each section, keeping narratives concise and direct. Should you have any questions, please contact substantivechange@accjc.org and we will be happy to assist you.

Email completed application to substantivechange@accjc.org.

Institution name:	College of the Redwoods				
Address:	7351 Tompkins Hill Road, Eureka, CA 95501				
ALO name:	Amy Moffat	Phone:	707-476-4315	Email:	Amy-Moffat@redwoods.edu

Select the type of Distance Education approval:

- 50 percent or more of all the institution's students enrolled in at least one course offered through distance education
____5,009_ Total number of students | ____2,763_ Total number of students enrolled in at least one distance education course
- 50 percent or more of all the institution's courses available to be offered in the distance education modality
_____ Total number of courses in catalog | _____ Total number of courses, not sections, available to be offered in distance education modality

It is the institution's responsibility to demonstrate the effect of a substantive change on the quality, integrity, capacity, and effectiveness of the total institution. The substantive change process requires evidence of institutional planning, resource commitment to the proposed change, and evidence that following the change, the institution continues to meet the Eligibility Requirements, Accreditation Standards and Commission policies. References to the Accreditation Standards are intended to help provide the institution with a framework for its response, and along with the required documentation, align with federal regulations for accreditation standards¹. Your thorough responses to the questions below and submission of required documentation will assist ACCJC in making its determination.

Describe how the distance education modality is consistent with the mission of the institution (Standard 1.1).

¹ 34 CFR § 602.16(a)

All offerings at the College of the Redwoods (CR), including Distance Education (DE) offerings, are aligned with its Mission.

MISSION: College of the Redwoods puts the success of each student at the forefront of every strategic effort. The college provides accessible and relevant educational programs that promote student academic achievement, career readiness, and lifelong learning so that our students may thrive in a rapidly changing world. We endeavor to meet the diverse needs of the communities we serve and to be a nimble and pioneering partner in the educational, civic, cultural, and economic development of the region. We recognize the future of learning will require flexibility and resiliency and we are committed to developing and expanding innovative in-person and online programs and responsive student services. Through assessment and evidence-based research, we continuously improve programs and address equity gaps to ensure that each student has the opportunity and support to succeed. We are dedicated to a just and sustainable world, to fostering a safe and inclusive educational community, and to advancing the values and goals of diversity, equity, inclusion, and accessibility. To achieve its mission, the Redwoods Community College District follows the mission of the California Community College System as determined by the State Legislature.

The Distance Education Program at College of the Redwoods is dedicated to using the creative application of technology to extend student access to higher education. While maintaining the College's standards of quality, distance education creates successful learning environments and decreases barriers to student learning such as time constraints and long commutes to campus. This is a high priority, as the Redwoods Community College District covers 10,000 square miles and is home to many people who are unable to come to a campus or site for instruction. The mission supports these priorities by “putting student success first,” “partnering with the community,” and providing “accessible and relevant developmental, career and technical, and transfer education.”

Describe how distance education will be integrated into the institution’s regular review of relevant and meaningfully disaggregated data to evaluate its progress and inform plans for improvement and innovation (Standard 1.3).

We have a commitment to disaggregate data for all courses, whether online or not. We will be moving from eLumen (traditional software) to their new “Insights” assessment tool which will collect student level assessment data for each course in Canvas, which is all courses whether online or not. With the transition to Insights during Spring 2025, we anticipate all courses will be assessed in this new way starting in Fall 2025, which will capture student-level assessment data that the IR office can then provide disaggregated data reports by a range of demographic and other student variables. We do not distinguish between in-person or online courses when it comes to the requirement to do assessment and our annual reports. We look at how we can do more for socioeconomically disadvantaged, underserved, and underrepresented students.

Describe how the distance education modality meets students and curricular needs and promotes equitable student learning and achievement (Standard 2.6).

A significant number of the members of the population served by the Redwoods Community College District are at a distance from the campuses, so might not be able to participate in higher education opportunities without online learning. In fact, in Spring 2024, CR included “More fully-online degrees and certificates” as an option in response to the question “What can we do to help you succeed at CR?” in its annual Distance Education Student Survey. This was the second most popular choice, with 42% of students selecting this option.

Equity in learning and achievement is a high priority for CR. In fact, it is a main pillar of the district’s Educational Master Plan (EMP): *Initiative #6 Increase Commitment to Diversity, Equity, and Inclusion.*

For Distance Education, this means ensuring that teachers have access to training in equitable and inclusive teaching practices, especially those related to Regular and Substantive Interaction (RSI), as high levels of interaction between teachers and students and among students has been shown to be an impactful practice in the drive to reduce achievement gaps between underrepresented groups and the general student population in online classes. High levels of interaction are also a hallmark of CR's developing online learning identity. Equitable and inclusive practices are a regular feature in our weekly DE Professional Development (PD) workshops and are an integral part of OTLT (Online Teaching and Learning Training), our multi-week, cohorted PD course for both new and experienced online teachers (it has foundational and advanced tracks).

In addition, to address digital accessibility, CR has hired an Instructional Support Specialist with a focus on Digital Accessibility. He assists teachers in designing and remediating online learning spaces for accessibility.

Describe how the institution designs and delivers equitable and effective services and programs (e.g., counseling, advising, tutoring, library, etc.) that support students in the distance education modality (Standard 2.7).

The College supports student learning and achievement by providing library and other learning support services that are sufficient in quantity, currency, depth, and variety to support educational programs, whether they are offered in a traditional delivery method or via distance education or correspondence. Services include, but are not limited to, library resources and research requests, student education planning, transcript evaluation, counseling and advising, EOPS, and DSPS. The library maintains an extensive collection of online databases and eBooks that are accessible by students throughout the District at all times. Counseling is available online and the College maintains online tutoring services and a virtual Welcome Center.

Describe how the institution ensures that “regular and substantive interaction” occurs between students and instructors (Policy on Distance Education and Correspondence Education).

The Distance Education Addendum to the Course Outline of Record includes an explanation of how course learning outcomes will be achieved in the distance learning format, how regular and substantive interaction between and among students and the instructor will be met, and the needs addressed by offering the course through distance education.

CR's AP 4106 (attached) addresses regular and substantive interaction (RSI) directly and specifically, and reference to this administrative procedure is included in OTLT (Online Teaching and Learning Training) and the Online Learning Quiz. Teachers must take OTLT or pass the Online Learning Quiz before teaching in a DE modality for the first time. The Quiz includes questions related to RSI in its present form, but it is currently being revised to reflect recent changes in federal, state, and ACCJC DE rules and regulations, and the draft revision includes more specific guidance around RSI.

Currently, CR's instructor evaluation system, which requires instructors to be evaluated every 3 years, includes forms that refer to teacher/student interaction. The forms are slated for revision, and planned revisions address RSI even more directly and thoroughly. All such revisions are subject to negotiation with the union.

Describe how the institution authenticates students in distance education courses (Policy on Distance Education and Correspondence Education).

Each time a student accesses an online course; they must log in to the Canvas LMS using a college-assigned unique identifier and a password to verify their identity. In the past two years, CR has moved

to a single sign on (SSO) system for employees and students; this system requires a second verification of identity to access Canvas (and other CR-provided digital tools and apps).

Describe how the institution employs qualified faculty, staff, administrators, and other personnel to support and sustain the distance education modality (Standard 3.1).

The standards (including minimum qualifications) and processes through which College of the Redwoods recruits, hires, and evaluates DE faculty, staff, and administrators are identical to those employed to for all faculty, staff, and administrators. The College employs a Distance Education Director, 1.5 Instructional Technologists, an Instructional Designer, and an Instructional Support Specialist in support of Digital Accessibility. Professional development (PD) for DE faculty is robust, including a multi-week, cohorted Online Teaching and Learning Training (OTLT), multiple weekly PD workshops, and a robust program supporting POCR (Peer Online Course Review) badging. Community-building is a high priority as the College develops and promotes a local set of best practices for DE design and delivery. Technology and design support for faculty is also provided, both in workshops and one-on-one.

Describe the institution's fiscal resources to support and sustain the distance education modality (Standard 3.4).

For 2024-25, the District has budgeted \$635,000 for the salaries and benefits of Distance Education staff. This includes a Director of Distance Education, an Instructional Designer, an Instructional Support Specialist III, and 1.5 Instructional Technologists. The District has also allocated \$5,000 as discretionary budget for Distance Education, and the District provides financial resources for several software programs and technology resources that support Distance Education.

Describe the institution's physical resources including, if applicable, equipment and supplies, to support and sustain the distance education modality (Standard 3.8).

As of this Fall 2024 semester, we only have two zoom rooms, one on the Eureka campus (AT 103/104), and one at the Del Norte Education Center (DA 1). These two campuses are about 2 hours apart and serve a large region including Humboldt and Del Norte Counties. These rooms are using Yealink technology and a zoom license.
The staff listed above also have a physical office located on the Eureka main campus.

Describe the institution's technology resources to support and sustain the distance education modality (Standard 3.9).

CR utilizes the CCCC-provided digital learning platform (Canvas) and digital tools (such as PopeTech for digital accessibility support; Canvas Studio for video creation, storage, and management; and CidiLabs DesignPLUS for the design of engaging and interactive content). In addition, we have purchased SensusAccess (for the generation of alternative formats for content, in support of equitable learning and digital accessibility) and Impact (to allow our DE Team to provide just-in-time guidance to teachers and students utilizing Canvas and to facilitate data-based decision-making; Impact is supported by the CCCC but required an installation and training fee from CR). We are piloting and may purchase Rumi, which provides a robust system for helping faculty manage student AI use.

Describe how the institution's decision-making structures support innovation and equitable student outcomes in the distance education modality (Standard 4.3).

The DE staff has already been listed above.
The Distance Education Planning Committee plans and recommends innovative and creative opportunities that use distance learning to meet the diverse needs of the District's students. The committee engages with and makes recommendations to the District regarding the practical aspects

of distance learning and technology-enhanced instruction. Like other planning committees, the DEPC regularly reviews relevant disaggregated data, provides annual plan items to the Institutional Effectiveness Committee, provides consultation for the practical implementation of the program review plans, and is responsible for maintaining a multi-year plan that aligns with the Education Master Plan. The DEPC is chaired by the DE Director, and its membership is composed of:

- Instructional Designer or Instructional Technologist
- Information Technology Director or Representative
- Chief Instructional Officer or Representative
- Senate DE Committee Chair or Representative
- Chief Student Services Officer or Representative
- Student (optional)
- Strategic Enrollment Management Committee Representative and/or Guided Pathways Representative (optional)
- Director of Admissions & Records or Representative
- Director of Institutional Effectiveness and Research or Representative
- Director of Student Accessibility and Support Services or Representative
- Director of Adult and Community Education or Representative
- Coordinators of Related Initiatives (such as Zero Textbook Cost) (optional)

The DE Plan is robust and attached as supporting evidence.

Required Documentation

Provide a hyperlink or include documentation for each item below. Be sure to provide a clear, descriptive name for each document.

- Documentation of the institution's advertising and recruitment policies, demonstrating alignment with the *Policy on Institutional Advertising and Student Recruitment*.
- Policies/processes for student complaints, demonstrating how the institution communicates process to students and handles complaints with due process. **AP5530**
- Documentation of institution's implementation of the required components of the Title IV Program (if applicable), including:
 - Findings from any audits and program/other review activities by the U.S. Department of Education (ED) ***We do not have any audits or findings related to Title IV.***
 - Evidence of timely corrective action taken in response to any Title IV audits or program reviews ***We do not have any necessary corrective actions.***

See *Policy on Institutional Compliance with Title IV*.

Supporting Evidence

Please provide any evidence that supports the narrative above as separate files. Please link evidence where appropriate in the narrative. Do not embed evidence files into the application.



Book	Administrative Procedures
Section	Chapter 4 - Academic Affairs
Title	Regular and Substantive Interaction
Code	AP 4106
Status	Active
Legal	<u>34 Code of Federal Regulations Section (b)(6).</u> <u>Title 5 of California Code of Regulations, Sections 55200 and 55204</u>
Adopted	May 1, 2020
Last Revised	April 2, 2024
Last Reviewed	April 2, 2024

The district recognizes that regular and substantive interaction between instructors and students is essential for all modes of learning, including face-to-face, distance education, and correspondence courses.

The specific mechanisms for regular and substantive interaction differ between the modes of learning but a predictable pattern of communication between instructors and students about course expectations, policies, and content shall occur such that students have the opportunity to engage with course material and achieve course learning outcomes.

For distance education classes, in alignment with the federal DOE definition of distance education and Title 5 language for instructor contact, regular and substantive interaction consists of the following:

Scheduled and predictable interaction between instructors and students, including the monitoring of student success for the purposes of as-needed proactive intervention, and the regular utilization of **at least two** of the following five:

- Providing direct, synchronous instruction
- Meaningfully assessing or providing feedback on student work
- Regularly communicating information or responding to questions about course content
- Facilitating group or class discussion regarding course content
- Another approved form of RSI from the following:

- Facilitated student-to-student interactions such as discussions with required peer response, peer feedback, interaction via class chat tool(s), student-led activities, group projects, collaborative artifacts, ice-breaker activities, and/or organized study groups
- Regular online office hours and/or optional synchronous online sessions
- Instructor-created asynchronous instructional videos

Distance Education (DE) Master Plan 2023-2025

Based on the goals of the College of the Redwoods’ Education Master Plan and the College of the Redwoods’ Strategic Plan, the Distance Education Program, in consultation with the staff and faculty of the Academic Senate Distance Education Committee, the Distance Education Planning Committee, the Distance Education Team, and the Technology Planning Committee has identified the following goals:

Goal 1: Support student success in digital learning

Objective	Actions	EMP Almnt	Success Measure(s) year 1	Success Measure(s) year 2
1.1. Provide students with effective preparation for online learning	Work with stakeholders to support an effective and equitable online student orientation	4.5	Online orientation created	Online orientation piloted; data collected, including disaggregated data to identify needs of a variety of students
	Explore bridging students to online orientation when basic tech skills are lacking	6.1	Stakeholders identified; meeting notes; possible intervention(s) identified (if determined to be needed)	Strategies for addressing needs of students needing basic tech skills shared; pilot solution(s) implemented or beginning to be implemented (depending on scope)
	Create and/or update online tutorials for students	6.1	One or more tutorials completed	Pilot of completed tutorial(s); data collected, including disaggregated data to identify needs of a variety of students
	Create opportunities for students to explore online learning before registration	5.2, 4.6	At least one solution for pre-registration exploration of online learning planned	Creation and early testing of pre-registration online learning exploration
	Create module(s) orienting students to online learning that can be embedded and used in online classes	6.1	One such module created	Pilot of module

Objective	Actions	EMP Almnt	Success Measure(s) year 1	Success Measure(s) year 2
1.2 Enhance professional development programs to improve student success	Every semester, include one or more topics relevant to student success, including DEIA (Diversity, Equity, Inclusion, & Accessibility) topics, during weekly sessions for faculty	6.1, 6.2	One such topic included in list each semester; workshop conducted	One such topic included in list each semester; workshop conducted
	Update and reinstitute the Online Teaching and Learning Training (OTLT) and other cohorted, long-term development opportunities, ensuring inclusion of topics related to student success and DEIA	6.1	OTLT updated and reinstated by Summer 2024, including student success and DEIA topics	OTLT further refined and offered again in AY 2024-25 and/or in Summer 2025, including student success and DEIA topics; first round of data collected monitoring the connection between OTLT and student success
1.3 Reduce costs to students as a barrier to education	Assist with ZTC (Zero Textbook Cost), LTC (Low Textbook Cost), and OER (Open Educational Resources) efforts	5.2, 6.2	Useful participation confirmed by ZTC Coordinator	Useful participation confirmed by ZTC Coordinator
	Identify, support, and help increase number of fully- online ZTC/LTC pathways to degrees and certificates, to increase access and support student equity and diversity	5.2, 6.2	ZTC/LTC fully-online pathways identified	Number of ZTC/LTC fully-online pathways increased by at least one
1.4 Promote and assist the district with improvement of online services for students	Work with stakeholders and campus experts to plan and provide needed support	4.4, 4.5	Areas for support identified and listed, action plan if warranted	Planned actions completed
	Work with stakeholders (Student Services, Marketing & Communications, etc.) to explore AR (Augmented Reality) campus tours &/or student orientation	4.5	Meeting notes, report including possible feasibility and impact	If warranted, pilot planned and implemented; relevant question included on DE student survey

Objective	Actions	EMP Alnmt	Success Measure(s) year 1	Success Measure(s) year 2
1.5 Ensure consistent student technical and Canvas support	As needed, work with IT (Information Technology) and Student Services stakeholders to support full- or half-time position to train and oversee student tech support workers and/or to provide tech support, especially during summer and breaks in semester	4.6	Position description, funding source identified, position posted	Position hired
	Provide guidebook and/or other training materials for student tech support workers and, as needed, their supervisor	4.6	Draft of training materials	Final draft of training materials distributed and employed
	Consider ticketing system for student tech support, especially if it can also be used by other student service providers at CR	4.6	Notes regarding one or more potential ticketing system; meeting notes from meetings with potential stakeholders from student services; funding source identified if needed	If identified as effective tool, ticketing system implemented, and data tracked and analyzed

Objective	Actions	EMP <small>Alnmt</small>	Success Measure(s) year 1	Success Measure(s) year 2
1.6 Ensure that the distance learning needs of all student populations are identified and met	In consultation with IR (Institutional Research), conduct and/or support research into various student populations and their needs, to include tracking gap between face-to-face and online classes for persistence, completion, and success rates, both aggregate data and data disaggregated by various student populations	3.5, 6.5	Presentation of research and data created and shared with stakeholders	Presentation of research and data created and shared with stakeholders
	Conduct regular survey of students to identify distance learning strengths and needs	3.5	Survey updated and deployed, and results analyzed every Spring; data used as appropriate for program review and decision-making	Survey updated and deployed, and results analyzed every Spring; data used as appropriate for program review and decision-making
	As needed, assist Student Services and/or Enrollment Management Committee in work with early alert systems	6.1	Communications with stakeholders, action plan if warranted	Planned actions completed
	When specific student needs are identified, create action plans to meet those needs, as appropriate	6.2	At least one action plan	Planned actions completed; data collected and analyzed, and used as appropriate for program review and decision-making

Objective	Actions	EMP Alnmt	Success Measure(s) year 1	Success Measure(s) year 2
1.7 Ensure that students registering for DE classes are apprised of key parameters, components, and/or requirements (as outlined in Title 5)	With an eye on state and national efforts to clarify modality definitions, develop district modality definitions to ensure common language and expectations	5.4	District modality definitions created and approved	n/a
	Work with IR and Deans to create and implement process for notifying students, before they register for a DE class, of key elements, including those outlined in Title 5	4.5, 5.2	Process created, codified, and piloted	Key elements of DE classes are publicized and available to students before they register; question related to this included on DE student survey
1.8 Collaborate with stakeholders to lay the groundwork for a digital campus hub or portal, where students can experience campus culture and community online	Identify stakeholders	4.5	Stakeholders identified and listed, at least one preliminary meeting held	n/a
	Identify data points, work cycles, and accreditation standards that would be helpful to consider; consider these data points and elements	4.5	Potentially helpful data points and elements identified and listed	Data pulled and considered; notes taken
	Engage in brainstorming regarding student needs, design strategy, tools, etc.	4.5	Meeting notes, including stakeholder representatives from Student Services, IT and/or Webmaster, and Academic Services	List of objectives, tentative design strategies identified, potential tools identified

Goal 2: Improve access to distance education (DE) courses and programs

Objective	Actions	EMP Almnt	Success Measure(s) year 1	Success Measure(s) year 2
2.1 Ensure Redwoods' effective inclusion in the CVC-OEI (California Virtual College Online Education Initiative) to help the district qualify for identified state benefits and opportunities in addition to improving access see also 3.2	Complete final steps in CVC- OEI inclusion process, including API integrations and completion of Teaching College cohort activities	5.2	Final steps completed; CR is a CVC-OEI Teaching College	n/a
	Continue to support Local POCR (Peer Online Course Review) Certification process, and once the district is certified, the Local POCR Badging process to ensure optimal positioning in the Course Finder algorithm	5.2	Ongoing funding source(s) identified for support of SARTCOs for the work of POCR Team members; SARTCOs approved, work completed and paid out	SARTCOs approved, work completed and paid out
	Track and monitor results of inclusion in CVC-OEI Course Finder and badging	5.2	Strategies for tracking and monitoring identified and prepared for data input	Enrollment and success rate data shared with campus; process for ongoing data sharing identified
	Gradually and sustainably increase the number of Quality Reviewed badged online classes	5.2, 6.1	At least 8 classes badged as Quality Reviewed	At least 15 classes badged as Quality Reviewed

Objective	Actions	EMP Almnt	Success Measure(s) year 1	Success Measure(s) year 2
-----------	---------	--------------	------------------------------	------------------------------

2.2 Identify and market unique Redwoods' Online identity	Work with stakeholders to identify aspects of Redwoods' identity that can be effectively translated and/or enhanced in the online environment	5.2	Senate DE Committee established as partner in this work; notes from one or more meetings including a variety of stakeholders; draft of CR's DE Identity elements circulated for feedback	Final draft of identity elements
	Collaboratively develop or revise Distance Education mission and vision statements in clear alignment with EMP (Education Master Plan) and district mission and vision statements	5.2, 6.1	Draft created that incorporates identity elements, circulated for feedback	Feedback incorporated; final draft of DE Mission and Vision statements
	Work with marketing and communications teams to ensure broad communication of Redwoods' Online unique identity	5.2	Meeting notes from meeting with marketing team identifying possible communication venues	DE mission and vision statements posted on website and at Keep Teaching or other intranet venues, additional communication venues utilized; question related to this included on DE student survey

Objective	Actions	EMP Almnt	Success Measure(s) year 1	Success Measure(s) year 2
-----------	---------	--------------	------------------------------	------------------------------

2.3 Develop, code, and market fully-online degree and certificate pathways	Identify currently existing pathways and strategic growth areas, considering district strengths, CVC-OEI needs, and community needs	5.2, 3.1	Meeting notes from meetings with stakeholders; at least one growth area identified	At least one additional fully-online pathway developed; plans outlined for future data collection and analysis
	Work with IR to develop ways to code pathways and collect data relevant to fully-online pathways for analysis and strategic planning purposes	5.2	Codes developed and communicated	Codes implemented
	Work with marketing and communications teams to effectively market fully-online degree and certificate pathways	5.2	Meeting notes from meetings with marketing and communications teams	At least one marketing campaign implemented; question related to this included on DE student survey
	Work with Guided Pathways Coordinator to identify and enhance initiatives and collaborations of mutual benefit	3.2, 4.2, 5.4, 6.1	Meeting notes from meetings with Guided Pathways Coordinator	Implementation of at least one identified action

Objective	Actions	EMP Alnmt	Success Measure(s) year 1	Success Measure(s) year 2
-----------	---------	--------------	------------------------------	------------------------------

2.4 Ensure appropriate participation of out-of-state students	Advocate for CA's inclusion in SARA (State Authorization Reciprocity Agreement), which may include advocating for changes in SARA standards	5.2	Notes from SARA webinars and policy meetings	Email evidence of communication of SARA information, including policy changes, with the campus
	Until such time as CA joins SARA, research and track the regulations of individual states that would allow registration of students from each of those states; for states for which such work is deemed appropriate, create partnerships and support enforcement of those regulations, and encourage enrollments from those states when regulations allow	5.2	Updated spreadsheet with regulations tracked per state, including recommendations about whether or not to pursue individual agreements with each state	Agreements in place for selected states
	If/when CA joins SARA, facilitate the district's membership in SARA, and ensure that SARA standards and regulations are adhered to, including annual reporting, the payment of membership fees, and participation in the SARA community	5.2	CR policies and practices aligned with SARA standards, application for SARA membership submitted	CR is a SARA member in good standing, including compliance with regulations and standards on an ongoing basis

Objective	Actions	EMP Almnt	Success Measure(s) year 1	Success Measure(s) year 2
-----------	---------	--------------	------------------------------	------------------------------

2.5 Explore part-of-term scheduling options for online classes, especially those in fully-online pathways, to increase marketability to and success of working adult students	Research part-of-term success rates and enrollment correlations at other CCs in CA, especially as they relate to returning students and/or online classes/programs	5.4, 6.1	Report drafted and shared with stakeholders	n/a
	Pilot part-of-term scheduling for one or more online class(es)	5.4, 6.1	Meeting notes identifying appropriate pilot parameters, including input from campus stakeholders and considering research results, local data (student demographics, in-demand classes, etc.), and local scheduling processes and limitations	Pilot run; pilot data collected, compared with control data and with other CA CC data, and shared; recommendation for future of program included in report
2.6 Explore possibility of microcredentials and/or badges for students	Research existing microcredentialing programs at other institutions; research existing certifications for localemployers/industries	2.5, 5.4, 5.5	Report drafted and shared with stakeholders, including feasibility and viability of implementing various types of microcredential and/or badge programs/processes	n/a
	If warranted, pilot microcredential or badge program/process	2.5, 5.4, 5.5	Meeting notes identifying appropriate pilot parameters, including input from campus stakeholders and considering research results, local data, and local scheduling processes and limitations	Pilot run (if warranted); pilot data collected and shared; recommendation for next steps included in report
2.7 Explore possibility of CBE (Competency-based Education)	Track CCCC (California Community Colleges Chancellor's Office)/DECO (DE Coordinators' Organization) focus on CBE; share information with stakeholders	5.4	CCCCO/DECO documents and/or meeting notes; meeting notes from sharing session(s)	n/a
	If warranted, outline possible CBE implementation plan	5.4	Notes from meetings with stakeholders identifying feasibility and viability of CBE, including local data, local processes, local capacities, and local limitations	Report of CBE viability shared, including outline of possible implementation plan if warranted
Objective	Actions	EMP Almnt	Success Measure(s) year 1	Success Measure(s) year 2

2.8 Share data with schedulers and Strategic Enrollment Management to support strategic scheduling decisions related to DE	Annually and/or as needed, present DE-related data, including POOCR badging, CVC- OEI metrics, and disaggregated student success rates (and, as appropriate, data related to part- of-term classes, microcredentials, and/or CBE)	3.2	Meeting notes, emails, and/or presentation slides	Meeting notes, emails, and/or presentation slides
2.9 Improve DE Program web presence	Work with Communications and Marketing teams and with the Webmaster to create and maintain effective new DE Program web presence	5.2	Meeting notes	Website or webpage is posted; question related to this included on DE student survey
	Explore sharing DE information in languages other than English	6.4	Meeting notes	If determined to be appropriate, one additional language represented on DE website

Goal 3: Practice continuous quality improvement for digital learning spaces and online programs

Objective	Actions	EMP <i>Alnmt</i>	Success Measure(s) year 1	Success Measure(s) year 2
3.1 Ensure effective data collection for DE Program use, and use resulting data to inform Program improvements	Conduct regular surveys of faculty and students to probe areas of strength and need in DE Program; address needs as they become apparent	3.6, 6.5	Survey results summary and analysis; presentation slides and/or item(s) in DE Newsletter; data incorporated into Program Review; at least one improvement identified	Implementation of identified improvement from previous year; new survey results summary and analysis; presentation slides and/or item(s) in DE Newsletter; data incorporated into Program Review and used as appropriate for decision-making; at least one new improvement identified
	Track student enrollment, student success, and other data appropriate to the assessment of DE Program, including disaggregated data to investigate various student populations (include non-credit ESL as one of these disaggregated populations)	6.5	Presentation slides and/or item(s) in DE Newsletter; data incorporated into Program Review	Presentation slides and/or item(s) in DE Newsletter; data incorporated into Program Review and used as appropriate for decision-making
	Collect and house DE-related requirements of CR's program accreditors; house information about preferred transfer institutions' DE-related requirements; share as needed	3.2	Spreadsheet created; accreditors' DE-related requirements recorded	Spreadsheet updated

Objective	Actions	EMP <small>Alnmt</small>	Success Measure(s) year 1	Success Measure(s) year 2
3.2 Provide professional development opportunities for faculty interested in creating and improving distance education courses see also 4.1, 2.1	Continue to offer weekly workshops, to reinstate OTLT, and to develop and offer quality cohorted, long-term professional development opportunities	5.1	Redesigned OTLT Canvas site fully developed; weekly workshops presented; at least one other cohorted long-term PD (Professional Development) opportunity offered and completed	Redesigned OTLT deployed at least one time; weekly workshops presented; at least one other cohorted long-term PD opportunity offered and completed
	Continue to utilize data from DE PD (Professional Development) Needs Assessment to inform PD topics and structures	5.1, 5.3	Meeting notes confirm that DE PD Needs Assessment Results utilized; frequency of Needs Assessment determined	Changes made to survey as needed; outline of redeployment
	Continue to support opt-in Local POCR Certification process,	5.1	Ongoing funding source(s) identified for support of SARTCOs for the work of POCR Team members	POCR-related SARTCOs managed and paid out appropriately

Objective	Actions	EMP Alnmt	Success Measure(s) year 1	Success Measure(s) year 2
3.3 Ensure compliance with state, federal, and accreditor regulations for distance education	Continue to participate actively in DECO, WCET (WICHE— Western Interstate Commission for Higher Education-- Cooperative for Educational Technologies), CVC-OEI, and other groups as appropriate	4.5	Webinar and meeting notes, WCET invoice paid	Webinar and meeting notes, WCET invoice paid
	Regularly identify areas in which compliance needs strengthening; work with appropriate groups (such as Senate and Union committees) to create mutually beneficial strategies to proactively address compliance deficits and to maintain and/or revise currently existing processes	3.2, 4.2, 6.4	DE section of new CRFO (CR Faculty Organization) contract satisfactorily updated; AP 4106 satisfactorily updated	AP 4105 satisfactorily updated
	Clearly and respectfully communicate regulatory requirements with campus stakeholders, including but not limited to creating a web page in DE area that will list current legislation and the current strategies for addressing legislation	3.4, 4.5	Information about relevant regulations and legislation included in regular workshops and discussions such as convocation sessions, weekly DE PD sessions, and revised OTLT	DE Webpages and/or Keep Teaching site(s) include legislation and regulation information, as appropriate
	Work with ALO (Accreditation Liaison Officer) and AOC (Accreditation Oversight Committee) to support successful self-study and site visit	3.2, 4.2, 6.4	Positive ACCJC (Accrediting Commission for Community and Junior Colleges) response to DE elements of self-study and Fall 2023 site visit	n/a
	Collaborate as needed on faculty evaluation initiatives relevant to DE	3.4, 6.5	If appropriate, revised faculty evaluation tools as related to evaluating online faculty and/or online classes; include evaluation- related question(s) in faculty survey tool to assess additional possible needs	Include analysis of evaluation- related needs in share-out of faculty survey results; initiate actions as needed

Objective	Actions	EMP <small>Alnmt</small>	Success Measure(s) year 1	Success Measure(s) year 2
3.4 Build supportive DE community	Maintain monthly DE Newsletter	3.4	Monthly newsletters distributed via email (except during summer months); question about DE Newsletter included in DE PD Needs Assessment and/or DE faculty survey	Monthly newsletters distributed via email (except during summer months); question about DE Newsletter included in DE PD Needs Assessment and/or DE faculty survey
	Continue to create opportunities for faculty members to share their work with one another	3.4	Continued Digital Class Tours during some DE PD Fridays; for topic-focused sessions, faculty panels used whenever possible; appropriate question(s) included in DE PD Needs Assessment and/or DE faculty survey	OTLT showcase for all participants (to which the campus is invited); inclusion of faculty presenters/panelists whenever possible; appropriate question(s) included in DE PD Needs Assessment and/or DE faculty survey
	Celebrate faculty good work in various ways	3.4	“Celebrating Good Work” section of DE Newsletter maintained; additional opportunities for celebration identified; appropriate question(s) included in DE PD Needs Assessment and/or DE faculty survey	“Celebrating Good Work” section of DE Newsletter maintained; additional identified opportunities for celebration implemented; appropriate question(s) included in DE PD Needs Assessment and/or DE faculty survey
	Create opportunities for faculty members to support and guide one another	3.4	OTLT syllabus includes intentional interactions between advanced and beginning tracks; appropriate question(s) included in OTLT evaluation survey	DE mentoring or buddy program implemented for new faculty; plan outlined for data collection and analysis
	Network with DE Program teams at other institutions in the state to ensure currency of best practices and participate in mutual cross-institutional support	3.4	Participation in OTC (Online Teaching Conference) in Summer of 2023; participation in DECO meetings; participation in CVC-OEI meetings	Small support team developed with individuals at similar CA institutions
	Maintain and/or expand welcoming physical space at the Faculty Support Center, one that can efficiently support formal and informal in-person, virtual, and hybrid interactions	3.4	Comfortable furniture, snacks, beverages provided; appropriate question(s) included in DE PD Needs Assessment and/or DE faculty survey; grant opportunities explored and reported upon	Equipment installed that supports hyflex meetings (in FM106); if grant opportunities are identified, at least one proposal submitted
	Explore developing and supporting structured, facilitated faculty learning communities on focused topics	3.4	Meeting notes from meetings with stakeholders outlining structure and identifying appropriate topics for pilot	Pilot of two facilitated faculty learning communities on identified topics; plan outlined for data collection and analysis

Objective	Actions	EMP <small>Alnmt</small>	Success Measure(s) year 1	Success Measure(s) year 2
3.5 Prioritize efforts to improve DEIA online (Diversity, Equity, Inclusion, and Accessibility) see also 4.3	Create full- or part-time permanent Digital Accessibility Aid position to support faculty	6.2, 6.4	Position approved, funding secured, position advertised	Position filled, usage data
	Ensure DEIA professional development opportunities, including during weekly sessions and in OTLT	5.3, 6.2	Digital Accessibility Convoy created and implemented; DEIA included in OTLT; DEIA discussed in at least one DE PD Fridays Session	Long-term, cohorted DEIA training session created
	Build Accessibility Resource Kits (ARKs) for faculty, tailored to discipline needs as warranted	6.2	ARK for STEM created	ARK(s) created for at least one more discipline; usage data
	Participate in CCCCO's ACMM (Accessibility Capability Maturity Model)	6.2, 6.4, 6.5	Begin ACMM participation, including some training, initial assessment (provided by CCCCO) and identifying at least one DE- focused milestone to be met within DE Plan timeframe	Meet at least one identified ACMM plan DE-focused milestone
3.6 Create resources for teachers to use as they construct digital learning spaces	Build plug-and-play modules for instructors to utilize in their classes as needed	4.5, 6.1	Possible module topics identified, prioritized list created, at least one module partially created	At least one module created, piloted, and assessed
	Build Canvas templates for teachers to use when crafting digital learning spaces	4.5, 6.1	In collaboration with stakeholders, various modalities and their unique template needs identified and captured, images collected, design tools and principles decided and captured	Templates created, at least one for each modality (online asynchronous, online synchronous or sync/async mix, hybrid, in person)
3.7 Explore microcredentials and/or badges for faculty and/or staff professional development	Issue badges for appropriate existing in-house professional development activities	5.3	Appropriate existing in-house professional development activities identified; badges issued	Badges issued on an ongoing basis; data collected and analyzed
	Work with stakeholders to identify and implement sustainable strategies for valuing badges	5.3	Meeting notes; strategies outlined	Strategies implemented

Objective	Actions	EMP Almnt	Success Measure(s) year 1	Success Measure(s) year 2
3.8 Help create and support self-serve recording studio to produce videos for learning, marketing, and other purposes	Help to install, secure, and ensure maintenance of necessary equipment in FM107A	4.5, 6.1	Lock on FM107A door installed, video equipment installed	Maintenance tickets submitted as needed
	Help create and communicate scheduling system for studio's use	4.5, 6.1	Scheduling system created	Scheduling system successfully implemented; faculty articulate the understanding that the studio is available for their use and how to access it
3.9 Work with IT to begin to implement Teams in Canvas	Work with IT to create an implementation plan	4.5	Draft implementation plan created	n/a
	Support individual faculty members in piloting Teams in Canvas	4.5	Individual faculty members identified for pilot; pilot begun	Pilot completed
	Analyze pilot data, adapt implementation plan accordingly	4.5	n/a	Report on pilot data shared with stakeholders; implementation plan revised accordingly, as needed

Goal 4: Prepare college community to effectively utilize digital learning tools

Objective	Actions	EMP Alnmt	Success Measure(s) year 1	Success Measure(s) year 2
4.1 Prepare faculty to effectively utilize technology in teaching see also 3.2	Work with instructional deans to create and refine processes for onboarding new faculty, as needed	5.3	Basic DE information shared in existing New Faculty Orientation; avenues for communicating basic DE information with new associate faculty identified and utilized; process for assigning each new faculty and associate faculty member a Canvas sandbox established	All new faculty and associate faculty assigned Canvas sandboxes soon after hiring; all new faculty and associate faculty can articulate how to access DE-related resources and personnel
	Reorganize and refine Keep Teaching site and maintain required Keep Teaching quiz	5.3	Process for quickly changing quiz questions established (through CRFO contract bargaining); Keep Teaching site reorganization outlined; Keep Teaching site usage survey deployed; process developed for ensuring that new DE teachers take quiz	Keep Teaching quiz revised; all new DE teachers have passed the quiz within the first month of the first semester they are teaching DE
	Develop training for the effective use of technology in classrooms, as needed	5.3	Inventory of exiting classroom technology; one or more question(s) about usage of classroom technology included on DE faculty survey; training needs identified	At least one training session implemented related to identified needs
4.2 Develop mobile learning solutions	Provide faculty with example mobile learning sites	5.3, 5.4	Exemplary digital learning sites that translate well to mobile devices identified	Sample digital learning sites that translate well to mobile devices included in DE resources (Webpages and/or Keep Teaching sites); faculty with mobile-friendly sites celebrated
	Provide training for faculty in the creation of mobile friendly learning materials	5.3, 5.4	Mobile-friendly course design tips included in at least one PD session	Mobile-friendly design elements training included in OTLT and in at least one DE PD Friday

Objective	Actions	EMP <small>Alnmt</small>	Success Measure(s) year 1	Success Measure(s) year 2
4.3 Strategically curate digital learning tools supported by the college and effectively communicate information about these tools see also 3.5	Work with IT to integrate Microsoft Teams into Canvas; help manage faculty training	3.2, 5.3	Significant evidence of DE Team Microsoft Teams usage, including program management tools	Training instrument created (in collaboration with IT)
	In consultation with stakeholders, identify digital- learning-tool needs, ensure those needs are met, and avoid duplication of services, keeping in mind resources available for free and at a discount through the Chancellor’s Office	3.2	Include question(s) on faculty survey related to digital learning tool needs; create list of needs and ideas for meeting needs	Implement at least one plan for meeting needs
	Create and regularly update resource spreadsheet of tools utilized on campus, the specific services they offer, their compliance with various regulations, tips for effective use, alternatives when compliance is in question, etc.	3.2	First draft of spreadsheet created; communication strategy and plan developed	Spreadsheet finalized (with collaboration of IT); communication plan implemented
	Create and update protocols for efficient and regular Canvas administration	3.2	First draft of protocols handbook created	Handbook finalized; review and revision schedule developed
4.4 Support Canvas use for non-instructional purposes	Provide design, development, and training support, as needed	3.2	Method for assessing staff needs related to Canvas devised, articulated, and deployed	Information accumulated and analyzed; training developed and deployed if needed
	Offer technical support for non-instructional Canvas use	3.2	Requests for help responded to; ticketing system explored	Services that can be provided communicated to staff; ticketing system implemented if warranted

Objective	Actions	EMP <small>Alnmt</small>	Success Measure(s) year 1	Success Measure(s) year 2
4.5 Support AI-related initiatives, discussion of impacts of AI (Artificial Intelligence) on higher education, and development of policies and practices in response to AI	Work with Academic Senate and other stakeholders to support efforts and initiatives as they are developed	5.1	Topic (AI and its impact on higher education) included as a 2023 Convocation session; series of discussion sessions included as part of the DE PD Friday line up for Fall 2023; “Keeping Up with ChatGPT” articles included in monthly DE Newsletters; DE presence at each regular Senate meeting, each Executive Committee meeting, and each DE Committee meeting at which AI is agendized (to serve as resource)	AI-related page(s) included in DE Website and/or Keep Teaching sites; any AI-related policies and/or procedures developed by the Senate have been supported by the DE Team to the extent desired by the Senate; DE Team member(s) identified as supportive and knowledgeable resources for AI-related information

Goal 5: Develop digital learning programs and services to meet community needs

Objective	Actions	EMP Alnmt	Success Measure(s) year 1	Success Measure(s) year 2
5.1 Develop digital learning services with community partners and colleague institutions	Meet with downtown center director to identify needs and appropriate programs	3.6	Meeting notes (after downtown center director hired); outline of possible support efforts developed; system outlined for identifying needs	Meeting notes; ongoing revision of outline of possible support efforts; system for identifying needs deployed
	Meet with Interim Senior Vice President of Strategic Initiatives to identify areas of potential growth in digital learning support for community partners and in the community at large	3.6	Meeting notes; outline of possible support efforts developed; system outlined for identifying needs	Meeting notes; ongoing revision of outline of possible support efforts; system for identifying needs deployed
	Develop systems to provide education and training in response to identified needs	3.5, 5.3	n/a	Implementation of at least one identified support effort (if any)
5.2 Support district exploration of 4-yr degrees and investigate how DE may play a role in program viability	Participate as needed in campus discussions about 4-yr degrees; brainstorm with DE Team as needed	5.1, 5.4	Meeting notes (if applicable)	n/a
	Participate as needed in planning and implementation, if online learning will play a role	5.1, 5.4	Meeting notes (if applicable)	Meeting notes (if applicable)

Objective	Actions	EMP Alnmt	Success Measure(s) year 1	Success Measure(s) year 2
5.3 Collaborate with CR stakeholders to explore community partnerships to provide and maintain satellite digital learning spaces for CR students, both credit and non- credit	Work with Del Norte and Klamath Trinity sites to explore and experiment with TelePresence alternatives, including but not necessarily limited to Zoom Rooms, OWLs, and remote-instructor options	4.6	Meeting notes from meetings with stakeholders (Nursing instructors, remote site directors, VPI (Vice President of Instruction), IT representatives, etc.)	Support directives addressed responsively
	Explore grant funding possibilities for equipment and infrastructure start-up costs	4.6	Meeting notes	Potential funding sources identified
	Identify resource individuals and potential community partners (such as libraries, community centers, cafes, K-12 schools, etc.)	4.6	Meeting notes	Potential sites identified
	Collect institutional historical knowledge about previous outreach projects; reconnect with Garberville and McKinleyville community partners if warranted	4.6	Meeting notes	n/a
	Explore set-up options with IT, including but not limited to Zoom Rooms	4.6	Meeting notes	First pilot site identified

Goal 6: Improve operational efficiency of DE Program

Objective	Actions	EMP Alnmt	Success Measure(s) year 1	Success Measure(s) year 2
6.1 Advocate for DE budget to centralize and more efficiently manage funds spent on DE-related tools and apps	In consultation with VPI, DE Team, and other stakeholders, determine feasibility, appropriate budget size, and appropriate shifting of budget items currently paid from other budgets	3.2	Meeting notes, appropriate processes and amounts identified	Budget allocated
	Identify support personnel to help manage budget paperwork	3.2	Support personnel identified	n/a
	Separate DE Program Review from Office of Instruction Program Review, to include SLOs (Student Learning Outcomes)	3.2	Separate DE Program Review site set up; SLOs created	DE Program Review submitted
6.2 Improve project management systems and communication	Acquire access to MS (Microsoft) Teams Project Management tools, learn to use tools, begin using tools, transfer Ongoing Projects document to new system	3.2	Ongoing Projects housed in MS Teams project management tool	Evidence of project management software's effective utilization
6.3 Maintain centrality of DE Plan in decision-making and work management	Ensure broad collaboration in creation and review of DE Plan; hold monthly meetings to review plan status; as opportunities arise, articulate DE Plan's alignment with EMP and other plans; utilize DE Plan in Program Review	3.2, 3.4	DE Plan passed through applicable review bodies; meeting notes	Meeting notes (including ideas for next steps for subsequent DE Plan); at least one DE-Plan-focused report made to DE Committee, DEPC, Cabinet and/or Board as requested; DE Plan reference included in at least one other plan

Objective	Actions	EMP Alnmt	Success Measure(s) year 1	Success Measure(s) year 2
6.4 Explore and implement systems for serving faculty requests, including possible ticketing system	Develop and implement MS Forms for more efficient processing of specific kinds of requests (such as class merging in Canvas); explore efficacy of implementing ticketing system for faculty help requests	3.2	RSI form and Class Merge Request forms widely utilized; notes regarding one or more potential ticketing system(s); funding source identified if needed for ticketing system	If identified as effective tool, ticketing system implemented
6.5 Work with Deans and other stakeholders to build and revise efficient systems for serving faculty &/or meeting regulatory requirements, as needed	Identify systems that need building and/or revising on an ongoing basis; solicit information about possible additional systems that may be needed; work with stakeholders to devise or revise systems; pilot, test, or iterate as appropriate; implement and communicate about systems	3.2	Systems created for course comments, for ensuring incomplete students' access to appropriate Canvas shells, for onboarding DE faculty members efficiently, and for making changes to course assignments	Evaluate and revise systems as needed; continue to develop new systems when needs surface
6.6 Work with stakeholders to consider merging all digital support systems for all members of the CR community (including students, faculty, and staff) to ensure ease of accessing assistance for end users	Meet with stakeholders; prioritize consolidation of digital student support systems	3.2	Meeting notes	n/a
	If merging digital support systems is considered an appropriate strategy, work towards implementation, along with other stakeholders	3.2	n/a	Identifiable steps taken towards implementation; evidence collected

Objective	Actions	EMP Alnmt	Success Measure(s) year 1	Success Measure(s) year 2
6.7 Prioritize professional development of DE Team members	All DE Team members: participate in Summer 2023 Online Teaching Conference	5.3, 6.1	Conference attended by all DE Team members; session information shared at least one DE PD Friday	n/a
	Each DE Team member: identify and complete at least 5 professional development opportunities (webinars, memberships, etc.)	5.3, 6.1	Professional development opportunities identified and recorded	Professional development opportunities completed and discussed at DE Team meeting and/or Good Ideas meeting; as appropriate, information shared at least one DE PD Friday



Book	Administrative Procedures
Section	Chapter 5 - Student Services
Title	Student Rights and Grievances
Code	AP 5530
Status	Active
Adopted	March 16, 1982
Last Revised	November 15, 2021
Last Reviewed	November 15, 2021

The purpose of this procedure is to provide a prompt and equitable means of resolving student grievances. This procedure is available to any student who reasonably believes a decision or action has adversely affected his or her status, rights, or privileges as a student.

Grievances related to:

- Course grades are addressed in Board Policy 4231, Grade Changes, and Administrative Procedure 4231.
- Sexual harassment, sexual assault, or illegal discrimination (i.e. age, ancestry, citizenship status, color, disability, ethnic group identification, gender, marital status, medical condition, national origin, parental status, race, religion, sexual orientation, or veteran status), are addressed in Administrative Procedure 3435 Discrimination and Harassment Complaints and Investigations. Students should contact the Director of Human Resources and/or Director of Public Safety.
- Financial aid;
- The exercise of rights of free expression, protected by state and federal constitutions and Education Code Section 76120, are addressed in Board Policy 3900 Free Expression by Students and Administrative Procedure 3900.

This procedure does not apply to the following:

- Student Conduct, which is covered under Board Policy 5500 and Administrative Procedure 5500.
- Police traffic tickets. Those complaints must be made to the local courts.
- Parking tickets. Those complaints must be made at the Public Safety Office.

At the Informal Grievance Process and Formal Grievance Process stages, students will have the right to be accompanied by an advisor (non-attorney) if so desired, conditional on 24-hour notice to and approval of the CSSO or designee. The advisor may attend meetings and hearings with the student to counsel them and suggest questions.

A. Informal Resolution Process

Each student who has a grievance shall make a reasonable effort to resolve the matter on an informal basis prior to requesting a grievance hearing, and shall attempt to solve the problem with the person with whom the student has the grievance, that person's immediate supervisor, or the college administration.

The District Superintendent/President shall appoint an employee who shall serve as the Grievance Officer. The Grievance Officer shall serve to assist all parties to facilitate a full, fair and efficient resolution of the grievance, shall coordinate all scheduling of hearings, and shall avoid an adversarial role.

Failure of the District to meet any of the deadlines specified in this Administrative Procedure shall not be construed against the District nor result in a finding in favor of the student.

B. Informal Grievance Process

A student who believes that his/her rights have been violated must make a reasonable, good faith attempt to resolve the matter through the informal grievance process before the formal process can be requested. At any point during the informal grievance process level, a student may also informally and orally present the complaint to the Grievance Officer.

1. First Step. The student should discuss the problem directly with the person involved or see the grievance officer for assistance in problem resolution within sixty (60) instructional days from the date the student became aware of the problem/or the alleged act. Failure of the student to act within the above specified sixty (60) day period shall constitute a waiver of the right to pursue the matter further.
2. Second Step. If the problem cannot be resolved at the first step, the student shall discuss the problem with the immediate supervisor of the person against whom the complaint is directed. The immediate supervisor shall make every effort to resolve the problem with the student and the person being grieved.
3. Third Step. If the problem cannot be resolved at the second step, the student shall discuss the grievance with the next-level administrator within ten (10) working days from receiving a decision from the immediate supervisor.

C. Formal Grievance Process

If the complaint cannot be satisfactorily resolved at the informal level, then the Formal Grievance Process shall be followed:

1. Student Files a Request for Hearing

The student must complete and deliver to the CSSO or designee the "Request for Hearing" form within ten (10) business days of receiving the written decision rendered by the area supervisor as described above.

The determination of whether the Request for Hearing presents sufficient grounds for a hearing shall be based on the following:

- The statement contains facts which, if true, would constitute a grievance under these procedures;
- The grievant is a student as defined in these procedures, which include applicants and former students;
- The grievant is personally and directly affected by the alleged grievance;
- The grievance was filed in a timely manner;
- The grievance is clearly not frivolous, without foundation, or filed for purposes of harassment.

If the grievance does not meet each of the requirements, the Hearing Committee chair shall notify the student in writing of the rejection of the Request for a Grievance Hearing, together with the specific reasons for the rejection and the procedures for appeal. This notice will be provided within 5 days of the date the decision is made by the Grievance Hearing Committee.

If the Request for Grievance Hearing satisfies each of the requirements, the College Grievance Officer shall schedule a grievance hearing. The hearing will begin within 10 days following the decision to grant a Grievance Hearing. All parties to the grievance shall be given not less than 5 days' notice of the date, time and place of the hearing.

2. CSSO or Designee Convenes the College Hearing Committee

The CSSO or designee shall then convene the College Hearing Committee within a period of fifteen (15) business days following receipt of the Request for Hearing to consider the complaint. The CSSO or designee shall consider the preferences of the accused student, the nature of the complaint, and the availability of the committee members when assigning the case for a hearing. The College Hearing Committee shall be composed of the following:

- Two students appointed by the ASCR President
- Two faculty members appointed by the Academic Senate Co-Presidents
- One classified member appointed by the CSEA President
- One administrator, who shall chair the committee, appointed by the College President or designee

All committee members shall be selected from among persons with little or no connection to the source of the complaint and that had no involvement in the decision, action, or incident. The CSSO or designee shall also confirm that all prospective members are not related in any way to the complainant.

3. Hearing Procedures

The Chair of the College Hearing Committee will establish a hearing format consistent with this administrative procedure. Formal hearings will be conducted by the committee according to the following guidelines:

1. In complaints involving more than one student complainant, the Chair of the College Hearing Committee will determine if hearings concerning each student will be conducted jointly or separately. The decision of the Chair shall be final on all matters relating to the process of the hearing unless there is a vote by other members of the panel to the contrary.
2. The student(s) will be notified by certified mail of the hearing at least five business days in advance of the hearing. The letter will inform the student of the time, location and place of the hearing and include a copy of this administrative procedure.
3. All parties shall be present at the hearing. In the willful absence of the complainant and/or a representative of his/her choice, the complaint will be dismissed.
4. Hearings shall be closed and confidential unless the one of the parties requests that it be open to the public. Any such request must be made no less than five days prior to the date of the hearing. In a closed hearing, witnesses shall not be present at the hearing when not testifying, unless all parties and the Chair agree to the contrary.
5. Quorum for a hearing requires that four (4) of the six College Hearing Committee members are present for the hearing. If the case is to be heard at the Del Norte Education Center, a quorum will be three (3) members of the Committee.
6. The parties may be accompanied by an advisor if so desired. The advisor may attend the hearing with the student to counsel him/her and suggest questions. The parties may be present during the entire time of the hearing, except during the deliberations of the Committee. In no event may the advisor participate directly by speaking for either party or questioning witnesses. Admission of any other person to the hearing will be at the discretion of the Chair.
7. The student may represent him or herself, and may also have the right to be represented by a person of his or her choice, with the exception that the student shall not be represented by an attorney unless agreed to in advance of the hearing by the Chair. The student must note on the Request for a Hearing form if the student wishes to be represented by an attorney. If the student is permitted to be represented by an attorney, the Committee may also request legal assistance. Any legal advisor provided to the Committee may sit with it in an advisory capacity to provide legal counsel but shall not be a member of the panel nor vote with it.
8. The parties may present evidence, including witnesses and written statements. The Chair will determine the format of the hearing, and the admissibility of witnesses or written statements, and may elect not to hear such statements if deemed redundant or irrelevant.
9. The Chair retains authority to question witnesses and parties to the alleged violations and will determine the appropriateness of questions posed by the parties. Other committee members should request and receive the permission of the Chair before asking questions of the witnesses. Employees against whom complaints have been filed will be advised of their right to remain silent, and may choose not to respond to any questions.
10. Pertinent and relevant information may be reviewed without regard to the legal rules of evidence.
11. The person making the complaint shall assume the burden of proof.
12. There will be a single verbatim recording, digital or taped, of all hearings before the Committee. No witness who refuses to be recorded may be permitted to give testimony. In the event the recording is by tape recording, the Committee Chair shall, at the beginning of the hearing, ask each person present to identify themselves by name, and thereafter shall ask witnesses to identify themselves by name. Recordings shall remain in the custody of the College at all times, unless released to a professional transcribing service. Access is limited to reviewing the verbatim record only on College premises and in the presence of the CSSO or designee. The verbatim record will be the property of the College.
13. The College Hearing Committee may accommodate concerns for the personal safety, well-being, or fears of confrontation of the complainant, staff or other witnesses during the hearing by providing separate facilities, by using a visual screen, or permitting participation by telephone, videophone, closed circuit television, video conferencing, videotape, audio tape, written statement, or other means, as determined in the sole judgment of the Chair to be appropriate and in the best interests of the parties.

14. Following testimony of witnesses, the Committee shall consider the complaint and determine if the complaint is valid. Determination of validity shall be made based on the preponderance of evidence.
15. The Committee shall then decide, by majority vote, if any remedy, action, or decision is required or necessary. The decision shall be based only on the record of the hearing, and not on matters outside of that record. The record consists of the original accusation, the written response, if any, of the student and staff, and the oral and written evidence produced at the hearing. The Committee need not limit its recommendations to the remedy requested by the student.
16. The Committee shall submit in writing its findings of validity and recommend action to the President. The President may accept or modify part or all of the Committee's recommendation and shall submit the decision, with stated reasons, to all concerned within the shortest reasonable time after the decision has been rendered, but not to exceed ten (10) business days after the hearing.
17. The decision shall include whether the complaint is valid or invalid, and may include specific recommendations for further action.
18. The student shall have the right to submit a written statement of response to the decision of the President. This statement shall be included with all other compiled records of the complaint.
19. The decision of the President shall be final.
20. The President shall refer all records to the CSSO or designee for retention.

References: Title IX, Education Amendments of 1972; Education Code Section 76224(a); Accreditation Eligibility Requirement 20 and ACCJC Standard IV.D

[Exh AP 5530A.pdf \(8 KB\)](#)

[Exh AP 5530B.pdf \(7 KB\)](#)

[Exh AP 5530C.pdf \(13 KB\)](#)

CR COLLEGE OF THE REDWOODS

FINDING YOUR PATH

New Academic Pathways at College of the Redwoods set students up for success *p. 4*

SPRING CLASS SCHEDULE *p. 7*

TUITION-FREE EDUCATION *p. 2*





Contents:

College Access Program 2
 Finding Your Path 3
 Course Listings Key 7
 Online Courses Information 7
 Online Classes 7
 Eureka Face-To-Face Classes 12
 Del Norte Face-To-Face Classes 22
 Klamath/Trinity Face-To-Face Classes..... 23

Eureka
 Del Norte
 Klamath-Trinity

Spring 2025 Important Dates and Academic Calendar:

Last Day to Register for Full Term Classes 1/17/2025
Spring 2025 Semester Begins* **1/18/2025**
 Martin Luther King, Jr.'s Birthday (*District-wide closure*) 1/20/2025
 Last Day to Add a Full Term Class 1/24/2025
 Last Day to Drop a Full Term Class without a "W" 2/2/2025
 Lincoln's Birthday (*District-wide closure*) 2/14/2025
 President's Day (*District-wide closure*) 2/17/2025
 Last Day to Petition to Graduate & for Certificate 3/6/2025
 Spring Break (No classes) 3/17 - 3/22/2025
 Last Day for Withdrawal 3/28/2025
 Final Exams 5/10 - 5/16/2025
 Last Day to File P/NP Option 5/16/2025
Spring 2025 Semester Ends **5/16/2025**

<p>January 2025</p> <p>1 2 3 4 5 6 7 8 9 10 11 12 13 14 15 16 17 18 19 20 21 22 23 24 25 26 27 28 29 30 31</p>	<p>April 2025</p> <p>1 2 3 4 5 6 7 8 9 10 11 12 13 14 15 16 17 18 19 20 21 22 23 24 25 26 27 28 29 30</p>
<p>February 2025</p> <p>1 2 3 4 5 6 7 8 9 10 11 12 13 14 15 16 17 18 19 20 21 22 23 24 25 26 27 28</p>	<p>May 2025</p> <p>1 2 3 4 5 6 7 8 9 10 11 12 13 14 15 16 17 18 19 20 21 22 23 24 25 26 27 28 29 30 31</p>
<p>March 2025</p> <p>1 2 3 4 5 6 7 8 9 10 11 12 13 14 15 16 17 18 19 20 21 22 23 24 25 26 27 28 29 30 31</p>	<p>Class days are shaded. Holidays are bold.</p> <p><i>*The majority of classes begin after Martin Luther King Jr. holiday on Monday, January 20th. However, a select few Saturday classes begin Saturday, January 18th.</i></p>



Providing accommodations, advising, and other assistive services related to disabilities. Please contact your campus SASS office at the numbers below.

Eureka: 707-476-4280
Del Norte: 707-465-2324
Klamath-Trinity: 707-476-4280

College Access Program

is College of the Redwoods' commitment to offering first-time college students tuition-free education.



With financial aid, most of our students pay just per semester.

\$46

Learn more at:
www.redwoods.edu/collegeaccess

Unlock Your Future

with our **FREE ESL** and **Work Readiness** Classes!

Are you ready to improve your English and enhance your career skills? Our range of **English as a Second Language (ESL)** and **Work Readiness** classes are designed to help you succeed in both academic and professional environments.

ESL 200 Fundamental English as a Second Language-Low Beginning
ESL 201 Fundamental English as a Second Language-High Beginning
ESL 205 Fundamental Career and Educational Vocabulary for ESL Students
ESL 210 Intermediate English as a Second Language – Low
ESL 211 Intermediate English as a Second Language- High
ESL 215 Intermediate Career and Educational Vocabulary for ESL Students
ESL 220 English for Reading and Writing
ESL 221 English for Reading and Writing II
ESL 224 English Grammar
ESL 225 Popular English
ESL 230 English for Listening, Speaking, and Pronunciation I
ESL 231 English for Listening, Speaking, and Pronunciation II

WORK 201 Work Readiness Skills for the 21st Century
WORK 220 Excellent Customer Service
WORK 221 Stress Management
WORK 222 Communication in the Workplace
WORK 223 Happiness and Success at Work
WORK 224 Conflict Management
WORK 225 Decision Making and Problem Solving
WORK 229 Time Management
WORK 230 Anger Management for the Workplace
WORK 280 Working with Seniors
WORK 282 Communicating in American Sign Language



CR COLLEGE OF THE REDWOODS

ADULT & COMMUNITY EDUCATION

525 D Street, Eureka, CA 95501

Phone: (707) 476- 4500 Fax: (707) 443-3417

www.redwoods.edu/academics/ace/index.php

FINDING YOUR PATH

**New Academic Pathways
at College of the Redwoods
set students up for success**



WHEN YOU VISIT Redwoods.edu, not only will you see a newly re-designed website, but you might also notice that we've organized our academic programs differently. We've introduced **Academic Pathways**—groupings of related programs designed to make it easier for students to find their path and stay on track. These pathways are meant to simplify your choices, offering a clear starting point to explore your interests and connect them to your long-term goals.

Whether you already have a plan in mind or are still figuring out where you see yourself in five, ten, or even twenty years, Academic Pathways can help you align your interests with your career goals and guide you into the program that offers the most straightforward path to getting there. This means you can spend less time and money in school and start your “real” life sooner.

This approach is part of a broader educational trend rooted in the concept of **metamajors**, a strategy many colleges have adopted to improve student success. Metamajors group related academic programs into clusters based on shared themes or career fields, making it easier for students to navigate their options. These groupings emerged from research showing that structured guidance helps students—especially first-generation college attendees and those from under-represented groups—make better choices,

stay focused, and graduate on time.

To enhance the effectiveness of Academic Pathways, we're also exploring the development of learning communities and cohorts tailored to each pathway. These groups will bring students together based on shared academic and career interests, creating an environment of collaboration and support. When students feel connected to their college and peers, they are more likely to persevere through challenges come back semester after semester. Learning communities foster relationships not only among peers but also with faculty. Research indicates that students who get to know their faculty better tend to perform better academically and have a stronger connection and deeper understanding of the subject-matter.

Our six distinct Academic Pathways offer students an easy way to find their place and pursue their goals:

ARTS, COMMUNICATION & EDUCATION

For creative thinkers and communicators, this pathway provides opportunities to develop skills in expression, cultural awareness, and critical thinking. Students can pursue impactful roles in education, law, media, and the arts, shaping how we connect and learn.

PROGRAMS INCLUDE:

- Art
- Communication
- English
- Early Childhood Education
- Humanities
- Liberal Arts
- Music



BUSINESS & INFORMATION SYSTEMS

This pathway is perfect for students interested in the dynamic worlds of business, technology, and innovation. It prepares students for careers in management, entrepreneurship, and IT, equipping them with practical skills to succeed in today's global economy.

PROGRAMS INCLUDE:

- Business
- Computer Information Systems

HEALTHCARE & WELLNESS

This pathway supports students drawn to health, healing, and wellness, preparing them to meet the growing demand for skilled healthcare professionals. From frontline caregiving to promoting physical fitness, students in this pathway can pursue rewarding and vital careers.

PROGRAMS INCLUDE:

- Kinesiology
- Dental Assisting
- Nursing
- Paramedic



SCIENCE, MATHEMATICS & NATURAL RESOURCES

Curious problem-solvers and nature enthusiasts will thrive in this pathway, which focuses on understanding and preserving the natural world while advancing scientific discovery. Students are prepared for careers in STEM, environmental conservation, and research.

PROGRAMS INCLUDE:

- Geology
- Mathematics
- Physics
- Biology
- Agriculture
- Forestry & Natural Resources
- Science Liberal Arts
 - Fire Training/Technology
 - Aquaculture



LAW, SOCIETY & HUMAN SERVICES

Designed for those passionate about making a difference in society, this pathway focuses on social justice, public service, and understanding human behavior. It prepares students for careers in counseling, advocacy, and law enforcement, among other impactful fields.

PROGRAMS INCLUDE:

- Sociology
- Anthropology
- Psychology
- Social Justice Studies
- Addiction Studies
- Social Work & Human Services
- History
- Political Science
- Philosophy
- Administration of Justice
- Behavioral & Social Sciences
- Liberal Arts



SKILLED TRADES & INDUSTRY

For hands-on learners who love to create and build, this pathway offers practical, industry-relevant training. Students in this pathway gain the skills needed for high-demand careers in fields essential to modern industry.

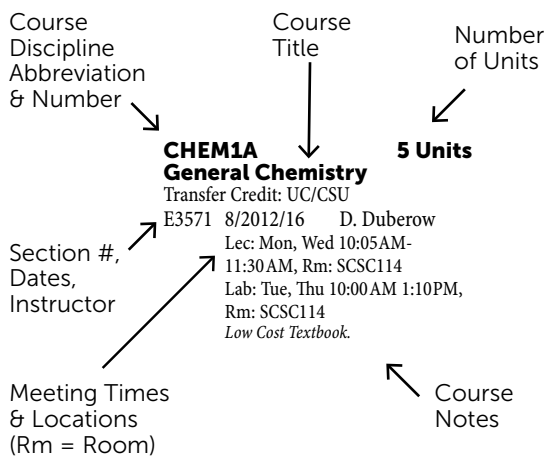
PROGRAMS INCLUDE:

- Automotive Technology
- Construction Technology
- Welding Technology

Our Academic Pathways, paired with planned learning communities and cohorts, provide an educational experience designed to empower students from the moment they start. By organizing programs into clear, accessible pathways, we're helping students explore their passions, find their purpose, and prepare for fulfilling futures. Whether their goal is transferring to a four-year university or stepping directly into a career, these pathways create a supportive framework that sets students up for success. ●

Please note that course offerings, days, times and room numbers are subject to change. Additionally, some courses require prerequisites that are not listed here. For the most up-to-date listings, please see the complete schedule at WebAdvisor.redwoods.edu/

Course Listings Key:



Online Courses Information:

All online classes use Canvas. (redwoods.instructure.com) We strongly encourage you to read the instructor's CLASS ORIENTATION LETTERS, which can be found at <https://redwoods.instructure.com/courses/2532>

GLOSSARY

Asynchronous allows students to view instructional materials each week at any time they choose and does not include a live video lecture component.

Synchronous students are required to log in and participate in class at a specific time each week.

Hybrid combines face-to-face classroom instruction with online learning. Students may be required to attend an on-campus class or lab and a synchronous online lecture a few times per semester.

ADDITIONALLY,

please see www.redwoods.edu/online for help with the following:

- Login Help & Support
- Getting Started in Canvas
- Frequently Asked Questions
- Laptop Lending & Library Computer Use
- Online Readiness Handbook
- Tutoring for Online Courses

Online Classes

ADDICTION STUDIES

ADCT-10 **3 Units**
Introduction to Addiction Studies
 Transfers to CSU
 V7607 1/18-5/16 C Perkins
This course totals 54 hours of instruction.

ADCT-17 **2 Units**
Field Placement Seminar II
 Transfers to CSU
 V8925 1/18-5/16 S Altschuler
This synchronous online class has mandatory Zoom meetings on Tuesday 6:05-8:10pm.

AGRICULTURE

AG-33 **3 Units**
Agriculture, Environment and Society
 Transfers to UC/CSU
 V7622 1/18-5/16 R Landry
This course totals 54 hours of instruction.

AG-5 **3 Units**
Introduction to Animal Science
 Transfers to UC/CSU
 V7623 1/18-5/16 Staff
This course totals 54 hours of instruction.

ADMINISTRATION OF JUSTICE

AJ-1 **3 Units**
Introduction to Administration of Justice
 Transfers to UC/CSU
 V7614 1/18-5/16 J Schutt
This course totals 54 hours of instruction.

AJ-6 **4 Units**
Criminal Evidence
 Transfers to CSU
 V7615 1/18-5/16 J Schutt
This course totals 54 hours of instruction.

ANTHROPOLOGY

ANTH-1 **3 Units**
Introduction to Biological Anthropology
 Transfers to UC/CSU
 V7573 1/18-5/16 J Shaw
This course totals 54 hours of instruction.

ANTH-1B **1 Units**
Introduction to Biological Anthropology Lab
 Transfers to CSU
 V7571 1/18-5/16 J Price
This course totals 54 hours of instruction.

ANTH-3 **3 Units**
Introduction to Cultural Anthropology
 Transfers to UC/CSU
 V7575 1/18-5/16 J Shaw
This course totals 54 hours of instruction.

ANTH-6 **3 Units**
Introduction to Forensic Anthropology
 Transfers to UC/CSU
 V7577 1/18-5/16 K Gaddis
This course totals 54 hours of instruction.

ART

ART-10 **3 Units**
Color and Design
 Transfers to UC/CSU
 V7739 1/18-5/16 L Galvan
This course totals 108 hours of instruction.

ART-17 **3 Units**
Basic Drawing
 Transfers to UC/CSU
 V7745 1/18-5/16 D Smith
This course totals 108 hours of instruction.

ART-17 **3 Units**
Basic Drawing
 Transfers to UC/CSU
 V7746 1/18-5/16 T Lund
Zero Cost Textbook

ART-17 **3 Units**
Basic Drawing
 Transfers to UC/CSU
 V8498 1/18-5/16 T Lund
Zero Cost Textbook

ART-1A **3 Units**
Art History: Pre-History to Gothic
 Transfers to UC/CSU
 V7749 1/18-5/16 M Cohen
This course totals 54 hours of instruction.

ART-1B **3 Units**
Art History: Renaissance to Contemporary
 Transfers to UC/CSU
 V7752 1/18-5/16 N Margulis
This course totals 54 hours of instruction.

ART-1B **3 Units**
Art History: Renaissance to Contemporary
 Transfers to UC/CSU
 V7753 1/18-5/16 N Margulis
This course totals 54 hours of instruction.

ART-2 **3 Units**
Introduction to Art
 Transfers to UC/CSU
 V7756 1/18-5/16 N Margulis

ART-35 3 Units
Digital Photography
 Transfers to UC/CSU
 V7760 1/18-5/16 D Wilson
This course totals 108 hours of instruction.

ART-4 3 Units
Art Appreciation
 Transfers to UC/CSU
 V7773 1/18-5/16 S Sullivan
This course totals 54 hours of instruction.

ART-4 3 Units
Art Appreciation
 Transfers to UC/CSU
 V7774 1/18-5/16 S Sullivan
This course totals 54 hours of instruction.

ART-4 3 Units
Art Appreciation
 Transfers to UC/CSU
 V7775 1/18-5/16 D Zdrzil
This course totals 54 hours of instruction.

ART-4 3 Units
Art Appreciation
 Transfers to UC/CSU
 V8151 1/18-5/16 D Zdrzil
This course totals 54 hours of instruction.

ART-41 3 Units
Introduction to Digital Art
 Transfers to UC/CSU
 V7762 1/18-5/16 J Stowe
Zero Cost Textbook

ART-42 3 Units
Beginning Graphic Design
 Transfers to UC/CSU
 V7763 1/18-5/16 J Stowe
Zero Cost Textbook

ART-42 3 Units
Beginning Graphic Design
 Transfers to UC/CSU
 V9019 1/18-5/16 M Whiteley
This course totals 108 hours of instruction.

ART-77 3 Units
Professional Practices and Development
 Transfers to CSU
 V7785 1/18-5/16 S Sullivan
This course totals 108 hours of instruction.

ASTRONOMY

ASTRO-10 3 Units
Introduction to Astronomy
 Transfers to UC/CSU
 V7580 1/18-5/16 J Pedicino
This class does not require in-person sessions at any location. You need access to a device with an internet connection. No additional technology-related purchases will be required. We will utilize Canvas as our learning platform. There will be no proctor

ASTRO-10 3 Units
Introduction to Astronomy
 Transfers to UC/CSU
 V7581 1/18-5/16 J Pedicino
This class does not require in-person sessions at any location. You need access to a device with an internet connection. No additional technology-related purchases will be required. We will utilize Canvas as our learning platform. There will be no proctor

ASTRO-10 3 Units
Introduction to Astronomy
 Transfers to UC/CSU
 V7582 1/18-5/16 J Pedicino
This class does not require in-person sessions at any location. You need access to a device with an internet connection. No additional technology-related purchases will be required. We will utilize Canvas as our learning platform. There will be no proctor

BIOLOGY

BIOL-1 4 Units
General Biology
 Transfers to UC/CSU
 V8304 1/18-5/16 W Riggs
Zero Cost Textbook

BIOL-1 4 Units
General Biology
 Transfers to UC/CSU
 V8305 1/18-5/16 L Anderson
This course totals 108 hours of instruction.

BIOL-1 4 Units
General Biology
 Transfers to UC/CSU
 V8306 1/18-5/16 Staff
108 hours of instruction.

BIOL-2 4 Units
Microbiology
 Transfers to UC/CSU
 V8310 1/18-5/16 C Callahan
This class meets exclusively online during the days and times listed. You need access to a device with an internet connection, a webcam, and a microphone. No additional technology-related purchases will be required. We will utilize Canvas as our learning

BIOL-2 4 Units
Microbiology
 Transfers to UC/CSU
 V8769 1/18-5/16 C Callahan
This course totals 144 hours of instruction.

BIOL-6 4 Units
Human Anatomy
 Transfers to UC/CSU
 V8317 1/18-5/16 W Riggs
This course totals 144 hours of instruction.

BIOL-7 4 Units
Human Physiology
 Transfers to UC/CSU
 V8319 1/18-5/16 W Riggs
Low Cost Textbook

BUSINESS

BUS-10 3 Units
Introduction to Business
 Transfers to UC/CSU
 V7636 1/18-5/16 C Wilshusen
This course totals 54 hours of instruction.

BUS-10 3 Units
Introduction to Business
 Transfers to UC/CSU
 V7637 1/18-5/16 M Cendejas
This course totals 54 hours of instruction.

BUS-1A 4 Units
Financial Accounting
 Transfers to UC/CSU
 V7642 1/18-5/16 D Byrne
This course totals 108 hours of instruction.

BUS-34 3 Units
Introduction to Personal Finance
 Transfers to CSU
 V7644 1/18-5/16 K Luke
This course totals 54 hours of instruction.

BUS-35 4 Units
Marketing and Social Media
 Transfers to CSU
 V7645 1/18-5/16 C Gaines
This course totals 72 hours of instruction.

BUS-4 3 Units
Advanced Computerized Bookkeeping
 Transfers to CSU
 V7646 1/18-5/16 D Byrne
This course totals 72 hours of instruction.

BUS-68 3 Units
Managing People and Projects
 Transfers to CSU
 V7648 1/18-5/16 C Wilshusen
This course totals 54 hours of instruction.

BUS-69 4 Units
Starting and Growing A Business
 Transfers to CSU
 V7649 1/18-5/16 C Gaines
This course totals 108 hours of instruction.

CHEMISTRY

CHEM-100 4 Units
Preparation for General Chemistry
 Not Transferrable
 V7797 1/18-5/16 Staff
This course totals 72 hours of instruction.

CINEMA

CINE-3 3 Units
The Cinemas of Latin America, Asia, and Africa
 Transfers to UC/CSU
 V8372 1/18-5/16 G Gopinath

COMPUTER INFORMATION SYSTEMS

CIS-1 4 Units
Computer Information Systems
 Transfers to UC/CSU
 V7651 1/18-5/16 M Henson
108 hours of instruction.

CIS-30 4 Units
CCNA: Computer Network Fundamentals
 Transfers to CSU
 V8467 1/18-5/16 A Murphy
Instructional material fees: \$15

CIS-37 4 Units
Ethical Hacking
 Transfers to CSU
 V7655 1/18-5/16 A Murphy
108 hours of instruction.

CIS-50 4 Units
Introduction to Data Base Management Systems
 Transfers to CSU
 V7656 1/18-5/16 T Hartman
108 hours of instruction.

COMMUNICATION STUDIES

COMM-7 3 Units
Interpersonal Communication
 Transfers to UC/CSU
 V8846 1/18-5/16 L Sayles
54 hours of instruction.

COMM-7 3 Units
Interpersonal Communication
 Transfers to UC/CSU
 V8863 2/1-5/16 O Mohammadi
This late start class begins 2/1/25. This course to

COMM-8 3 Units
Intercultural Communication
 Transfers to UC/CSU
 V7605 1/18-5/16 L Sayles
Zero Cost Textbook

COMM-C1000 3 Units
Introduction to Public Speaking
 Transfers to UC/CSU
 V7594 1/18-5/16 T Pearson
This course totals 54 hours of instruction. Student

COMM-C1000 3 Units
Introduction to Public Speaking

Transfers to UC/CSU
 V7595 1/18-5/16 C Lancaster
This class meets exclusively online during the days and times listed. You need access to a device with an internet connection, a webcam, and a microphone. No additional technology-related purchases will be required. We will utilize Canvas as our learning platform.

COMM-C1000 3 Units
Introduction to Public Speaking

Transfers to UC/CSU
 V7596 1/18-5/16 C Lancaster
This class meets exclusively online during the days and times listed. You need access to a device with an internet connection, a webcam, and a microphone. No additional technology-related purchases will be required. We will utilize Canvas as our learning platform.

COMM-C1000 3 Units
Introduction to Public Speaking

Transfers to UC/CSU
 V8866 1/18-5/16 O Mohammadi

COMM-C1000 3 Units
Introduction to Public Speaking

Transfers to UC/CSU
 V8867 1/18-5/16 O Mohammadi

DRAFTING TECHNOLOGY

DT-23 3 Units
Engineering Design Graphics

Transfers to CSU
 V7717 1/18-5/16 J Carpenter
 54 hours of instruction.

EARLY CHILDHOOD EDUCATION

ECE-1 3 Units
Principles and Practices of Teaching Young Children

Transfers to CSU
 V7682 1/18-5/16 D Kalvaitis
 54 hours of instruction.

ECE-11 3 Units
Infant-Toddler Care and Education

Transfers to CSU
 V7687 2/8-4/12 M Hancock
 This late start class begins 2/8/25.

ECE-13 3 Units
Administration II: Personnel and Leadership in Early Childhood Education

Transfers to CSU
 V7686 1/18-5/16 M Hancock
 This course totals 54 hours of instruction.

ECE-18 3 Units
Teaching in a Diverse Society

Transfers to CSU
 V7688 1/18-5/16 D Kalvaitis
 54 hours of instruction.

ECE-2 3 Units
Child Growth and Development

Transfers to CSU
 V7683 1/18-5/16 D Kalvaitis
 54 hours of instruction.

ECE-6 3 Units
Health, Safety and Nutrition

Transfers to CSU
 V8130 1/18-5/16 D Kalvaitis
 54 hours of instruction.

ECE-9 3 Units
Observation and Assessment Childhood Education

Transfers to CSU
 V7685 1/18-5/16 A Chivington

ECONOMICS

ECON-1 3 Units
Macroeconomics

Transfers to UC/CSU
 V7699 1/18-5/16 M Dennis
 54 hours of instruction.

ECON-1 3 Units
Macroeconomics

Transfers to UC/CSU
 V7700 2/8-5/16 M Dennis
 This late start class begins 2/8/25.

ECON-10 3 Units
Microeconomics

Transfers to UC/CSU
 V7690 1/18-5/16 M Dennis
 54 hours of instruction.

ENGLISH

ENGL-C1000 4 Units
Academic Reading and Writing

Transfers to UC/CSU
 V7818 1/18-5/16 R Odell
 Zero Cost Textbook

ENGL-C1000 4 Units
Academic Reading and Writing

Transfers to UC/CSU
 V7819 1/18-5/16 R Odell
 Zero Cost Textbook

ENGL-C1000 4 Units
Academic Reading and Writing

Transfers to UC/CSU
 V7820 1/18-5/16 R Roberson
 Low Cost Textbook

ENGL-C1000 4 Units
Academic Reading and Writing

Transfers to UC/CSU
 V7821 1/18-5/16 R Roberson
 Low Cost Textbook

ENGL-C1000 4 Units
Academic Reading and Writing

Transfers to UC/CSU
 V7822 1/18-5/16 S Mondor
 This course totals 72 hours of instruction.

ENGL-C1000 4 Units
Academic Reading and Writing

Transfers to UC/CSU
 V7823 1/18-5/16 E Sullivan
 Zero Cost Textbook

ENGL-C1000 4 Units
Academic Reading and Writing

Transfers to UC/CSU
 V7824 1/18-5/16 E Sullivan
 Zero Cost Textbook

ENGL-C1000 4 Units
Academic Reading and Writing

Transfers to UC/CSU
 V7825 1/18-5/16 G Engle
 This course totals 72 hours of instruction.

ENGL-C1000 4 Units
Academic Reading and Writing

Transfers to UC/CSU
 V7826 2/1-5/16 J Gonzalez
 This late start class begins 2/1/25.
 This course to

ENGL-C1000 4 Units
Academic Reading and Writing

Transfers to UC/CSU
 V7827 2/1-5/16 J Gonzalez
 This late start class begins 2/1/25.
 This course to

ENGL-C1001 3 Units
Critical Thinking and Writing

Transfers to UC/CSU
 V7833 1/18-5/16 L Gorman
 This course totals 54 hours of instruction.

ENGL-C1001 3 Units
Critical Thinking and Writing

Transfers to UC/CSU
 V7836 1/18-5/16 J Brown
 This course totals 54 hours of instruction.

ENGL-C1001 3 Units
Critical Thinking and Writing

Transfers to UC/CSU
 V7837 1/18-5/16 L Kirkpatrick-Dib
 This course totals 54 hours of instruction.

ENGL-C1001 3 Units
Critical Thinking and Writing

Transfers to UC/CSU
 V7838 2/1-5/16 C Wormhoudt
 This late start class begins 2/1/24.
 This course to

ENGL-C1001 3 Units
Critical Thinking and Writing

Transfers to UC/CSU
 V7839 2/1-5/16 G Engle
 This late start class begins 2/1/24.
 This course to

ENGL-C1001 3 Units
Critical Thinking and Writing

Transfers to UC/CSU
 V7840 2/15-5/16 C Phillips
 This late start class begins 2/15/25.
 This course t

ENVIRONMENTAL SCIENCE

ENVSC-10 4 Units
Introduction to Environmental Science

Transfers to UC/CSU
 V8321 1/18-5/16 L Morgan
 This course totals 108 hours of instruction.

ESL-211 0 Units
Intermediate English as a Second Language (ESL) - High

Not Transferrable
 V8583 1/18-5/16 K Guimaraes
 This is an online synchronous class, students must meet online

ENGLISH AS A SECOND LANGUAGE

ESL-215 0 Units
Intermediate Career and Educational Vocabulary for ESL Students

Not Transferrable
 V9119 1/18-5/16 Staff
 This course meets on the Downtown campus.

ESL-225 0 Units
Popular English Language (ESL) - Low Beginning

Not Transferrable
 V9114 1/18-5/16 Staff
 This is an online synchronous class, students must meet online during set dates and times.

GEOGRAPHY

GEOG-1 3 Units
Introduction to Physical Geography

Transfers to UC/CSU
 V7844 1/18-5/16 D Bazard
 This course totals 54 hours of instruction.

GEOLOGY

GEOL-10 Environmental Geology **3 Units**

Transfers to UC/CSU
V7846 1/18-5/16 J Renner
This course totals 54 hours of instruction.

GENERAL STUDIES

GS-1 College Success **3 Units**

Transfers to CSU
V8402 2/1-5/16 M Peterson

GS-1 College Success **3 Units**

Transfers to CSU
V8403 2/1-5/16 M Peterson

GS-1 College Success **3 Units**

Transfers to CSU
V8404 2/1-5/16 M Peterson

GUIDANCE

GUID-145 Applied Study Skills and Strategies **1 - 4 Units**

Not Transferrable
V8521 1/18-5/16 A Nichols
This class meets exclusively online during the days and times listed. You need access to a device with an internet connection, a webcam, and a microphone.

GUID-146 Applied Study Skills & Strategies for English **1 - 4 Units**

Not Transferrable
V8524 1/18-5/16 A Nichols
This class meets exclusively online during the days and times listed. You need access to a device with an internet connection, a webcam, and a microphone.

GUID-147 Applied Study Skills and Strategies For Math **1 - 4 Units**

Not Transferrable
V8527 1/18-5/16 A Nichols
This class meets exclusively online during the days and times listed. You need access to a device with an internet connection, a webcam, and a microphone.

GUID-148 Applied Study Skills and Strategies for Science **1 - 4 Units**

Not Transferrable
V8530 1/18-5/16 A Nichols
This class meets exclusively online during the days and times listed. You need access to a device with an internet connection, a webcam, and a microphone.

GUID-47 Leadership Development **2 Units**

Transfers to CSU
V8405 2/1-5/16 A KlingonSmith

GUID-8 Career Planning **2 Units**

Transfers to CSU
V8406 2/1-5/16 A KlingonSmith

HEALTH EDUCATION

HE-1 Health Education **3 Units**

Transfers to UC/CSU
V8189 2/8-4/11 M White
This late start class begins 2/8/25.

HISTORY

HIST-12 History of Women in America: 1877- Present **3 Units**

Transfers to UC/CSU
V7854 1/18-5/16 S Salinas
54 hours of instruction.

HIST-21 World History: 1500 CE-Present **3 Units**

Transfers to UC/CSU
V7856 1/18-5/16 D Syrdal
54 hours of instruction.

HIST-23 Modern Latin American History **3 Units**

Transfers to UC/CSU
V7857 1/18-5/16 R Dschida
This course totals 54 hours of instruction.

HIST-4 Western Civilization to the Reformation **3 Units**

Transfers to UC/CSU
V7858 1/18-5/16 D Syrdal
This course totals 54 hours of instruction.

HIST-8 US History Through Reconstruction **3 Units**

Transfers to UC/CSU
V7862 1/18-5/16 D Syrdal
This course totals 54 hours of instruction.

HIST-8 US History Through Reconstruction **3 Units**

Transfers to UC/CSU
V7863 1/18-5/16 A Queen
This course totals 54 hours of instruction.

HIST-8 US History Through Reconstruction **3 Units**

Transfers to UC/CSU
V7864 2/1-5/16 A Queen
This late start class begins 2/1/25.

HIST-9 US History Reconstruction to the Present **3 Units**

Transfers to UC/CSU
V7869 1/18-5/16 A Hoffmann
This course totals 54 hours of instruction.

HIST-9 US History Reconstruction to the Present **3 Units**

Transfers to UC/CSU
V7870 2/1-5/16 S Salinas
This course totals 54 hours of instruction.

HEALTH OCCUPATIONS

HO-15 Nutrition **3 Units**

Transfers to UC/CSU
E8256 1/18-5/16 C Dobrowolski

HO-15 Nutrition **3 Units**

Transfers to UC/CSU
V8257 1/18-5/16 C Dobrowolski
54 hours of instruction.

HO-15 Nutrition **3 Units**

Transfers to UC/CSU
V8258 1/18-5/16 L King
54 hours of instruction.

KINESIOLOGY

KINS-65 Foundations of Kinesiology **3 Units**

Transfers to UC/CSU
V8194 1/18-5/16 M White
This course totals 54 hours of instruction.

KINS-66 Concepts of Physical Fitness and Exercise **3 Units**

Transfers to UC/CSU
V8195 1/18-5/16 M Gleave
This course totals 54 hours of instruction.

MATHEMATICS

MATH-204 Algebra Review for Introduction to Chemistry **0 Units**

Not Transferrable
V7955 1/18-5/16 T Keiber

MATH-207 Math Review for the Teas Exam Non-Credit **0 Units**

Not Transferrable
V8458 1/18-3/14 A Buntin
Low Cost Textbook

MATH-25 College Trigonometry **4 Units**

Transfers to CSU
V7963 1/18-5/16 M Butler
This course totals 72 hours of instruction.

MATH-30 College Algebra **4 Units**

Transfers to UC/CSU
V7977 1/18-5/16 Staff
This course totals 72 hours of instruction.

MATH-31 College Algebra With Support **5 Units**

Transfers to CSU
V7976 1/18-5/16 E Wall
Zero Cost Textbook

MATH-5 Contemporary Mathematics **3 Units**

Transfers to CSU
V7984 1/18-5/16 S Jackson
This course totals 54 hours of instruction.

MATH-5 Contemporary Mathematics **3 Units**

Transfers to CSU
V7985 2/1-5/16 T Matsumoto
Zero Cost Textbook

MATH-50A Calculus I: Single Variable Calculus **4 Units**

Transfers to UC/CSU
V7979 1/18-5/16 A Buntin
Zero Cost Textbook

MATH-50B Integral Calculus **4 Units**

Transfers to UC/CSU
V7980 1/18-5/16 T Matsumoto
Zero Cost Textbook

NATIVE AMERICAN STUDIES

NAS-1 Introduction to Native American Studies **3 Units**

Transfers to UC/CSU
V7894 1/18-5/16 C Agee
This course totals 54 hours of instruction.

NAS-1 Introduction to Native American Studies **3 Units**

Transfers to UC/CSU
V7895 1/18-5/16 J Whitney
This course totals 54 hours of instruction.

NAS-1 Introduction to Native American Studies **3 Units**

Transfers to UC/CSU
V7896 1/18-5/16 J Whitney
This course totals 54 hours of instruction.

NAS-1 Introduction to Native American Studies **3 Units**

Transfers to UC/CSU
V7897 1/18-5/16 J Whitney
This course totals 54 hours of instruction.

NAS-1 Introduction to Native American Studies **3 Units**

Transfers to UC/CSU
V7898 2/15-5/16 Staff
This late start class 2/15/25. This course totals 54 hours of instruction.

PHYSICAL EDUCATION

PE-10 1 Units
Running and Walking

Transfers to UC/CSU
V8197 1/18-5/16 M Gleave
This course totals 54 hours of instruction.

PE-10 1 Units
Running and Walking

Transfers to UC/CSU
V8198 3/24-5/16 M Gleave
This late start class begins 3/24/25.

PE-9 1 Units
Hiking

Transfers to UC/CSU
V8223 1/18-5/16 M Gleave
This course totals 54 hours of instruction.

PHILOSOPHY

PHIL-1 3 Units
Critical Thinking

Transfers to UC/CSU
V7919 1/18-5/16 S Savage
This course totals 54 hours of instruction.

PHIL-10 3 Units
Introduction to Philosophy

Transfers to UC/CSU
V7910 1/18-5/16 S Savage
This course totals 54 hours of instruction.

PHIL-10 3 Units
Introduction to Philosophy

Transfers to UC/CSU
V7911 1/18-5/16 S Savage
This course totals 54 hours of instruction.

PHIL-12 3 Units
Introduction to Logic

Transfers to UC/CSU
V7913 1/18-5/16 J Johnston
This course totals 54 hours of instruction.

PHIL-15 3 Units
Religions of the World

Transfers to UC/CSU
V7915 1/18-5/16 P Freneau
This course totals 54 hours of instruction.

PHIL-15 3 Units
Religions of the World

Transfers to UC/CSU
V7916 1/18-5/16 T Bos
This course totals 54 hours of instruction.

PHIL-20 3 Units
Introduction to Ethics

Transfers to UC/CSU
V7921 1/18-5/16 J Johnston
This course totals 54 hours of instruction.

PHYSICS

PHYS-10 3 Units
Conceptual Physics

Transfers to UC/CSU
V7293 1/18-5/16 J McElderry
This course totals 54 hours of instruction.

PHYS-2B 4 Units
General Physics II

Transfers to UC/CSU
V7295 1/18-5/16 E Kramer
This class does not require in-person sessions at any location. You need access to a device with an internet connection. We will utilize Canvas as our learning platform. This class section may be merged with other section(s). This course totals 108 hours.

PHYS-4A 4 Units
Calculus-Based Physics: Mechanics

Transfers to UC/CSU
V7297 1/18-5/16 E Kramer
This class requires both in person and online components. All meeting times and days are listed. You need access to a device with an internet connection. We will utilize Canvas as our learning platform. This class section may be merged with other section.

PHYS-4C 4 Units
Calculus-based Physics: Heat, Optics, Waves and Modern Physics

Transfers to UC/CSU
V7299 1/18-5/16 E Kramer
This class does not require in-person sessions at any location. You need access to a device with an internet connection. We will utilize Canvas as our learning platform. This class section may be merged with other section(s). This course totals 108 hours

POLITICAL SCIENCE

POLS-C1000 3 Units
American Government and Politics

Transfers to UC/CSU
V7924 1/18-5/16 R Emenaker
This course totals 54 hours of instruction.

POLS-C1000 3 Units
American Government and Politics

Transfers to UC/CSU
V7925 1/18-5/16 R Emenaker
This course totals 54 hours of instruction.

POLS-C1000 3 Units
American Government and Politics

Transfers to UC/CSU
V7926 1/18-5/16 R Hicks
This course totals 54 hours of instruction.

POLS-C1000 3 Units
American Government and Politics

Transfers to UC/CSU
V7927 1/18-5/16 E Naffah
This course totals 54 hours of instruction.

POLICE SCIENCE

POLSC-12 3 Units
State and Local Politics

Transfers to CSU
V7928 2/1-5/16 E Naffah
This late start class begins 2/1/25. This course to

POLSC-20 3 Units
Comparative Politics

Transfers to UC/CSU
V7930 1/18-5/16 J Schutt
This course totals 54 hours of instruction.

PSYCHOLOGY

PSYC-C1000 3 Units
Introduction to Psychology

Transfers to UC/CSU
V7994 1/18-5/16 D Herrera
This course totals 54 hours of instruction.

PSYC-C1000 3 Units
Introduction to Psychology

Transfers to UC/CSU
V7995 1/18-5/16 D Herrera
This course totals 54 hours of instruction.

PSYC-C1000 3 Units
Introduction to Psychology

Transfers to UC/CSU
V7996 1/18-5/16 D Herrera
This course totals 54 hours of instruction.

PSYC-C1000 3 Units
Introduction to Psychology

Transfers to UC/CSU
V7997 1/18-5/16 S Quiggle
This course totals 54 hours of instruction.

PSYCH-11 3 Units
Lifespan Development

Transfers to UC/CSU
V7987 1/18-5/16 H Morgan
This course totals 54 hours of instruction.

PSYCH-11 3 Units
Lifespan Development

Transfers to UC/CSU
V7988 2/1-5/16 H Morgan
This late start class begins 2/1/24. This course to

PSYCH-2 3 Units
Research Methods in Psychology

Transfers to UC/CSU
V8000 1/18-5/16 M Haggerty
This class does not require in-person sessions at any location. You need access to a device with an

internet connection. No additional technology-related purchases will be required. We will utilize Canvas as our learning platform. There will be no proctor

PSYCH-20 3 Units
Biological Psychology

Transfers to UC/CSU
V7998 1/18-5/16 K Schopp
This course totals 54 hours of instruction.

PSYCH-30 3 Units
Social Psychology

Transfers to UC/CSU
V8003 1/18-5/16 D Herrera
This course totals 54 hours of instruction.

PSYCH-30 3 Units
Social Psychology

Transfers to UC/CSU
V8004 1/18-5/16 D Herrera
This course totals 54 hours of instruction.

PSYCH-33 3 Units
Personal Growth and Adjustment

Transfers to CSU
V8007 1/18-5/16 P Freneau
This course totals 54 hours of instruction.

SOCIOLOGY

SOC-1 3 Units
Introduction to Sociology

Transfers to UC/CSU
V7933 1/18-5/16 P Mancus
Low Cost Textbook

SOC-1 3 Units
Introduction to Sociology

Transfers to UC/CSU
V7935 1/18-5/16 D Maher
Low Cost Textbook

SOC-1 3 Units
Introduction to Sociology

Transfers to UC/CSU
V7936 1/18-5/16 D Maher
Low Cost Textbook

SOC-2 3 Units
Social Problems

Transfers to UC/CSU
V7937 1/18-5/16 P Mancus
Low Cost Textbook

SPANISH

SPAN-1A 4 Units
Elementary Spanish I

Transfers to UC/CSU
V7788 1/18-5/16 K Carlsen-Capozzo
This class meets exclusively online during the days and times listed. You need access to a device with an internet connection, a webcam, and a microphone. No additional technology-related purchases will be required. We will utilize Canvas as our learning

SPAN-1B 4 Units
Elementary Spanish II
 Transfers to UC/CSU
 V7790 1/18-5/16 K Carlsen-
 Capozzo
This class meets exclusively online during the days and times listed. You need access to a device with an internet connection, a webcam, and a microphone. No additional technology-related purchases will be required. We will utilize Canvas.

STATISTICS

STAT-C1000 4 Units
Introduction to Statistics
 Transfers to UC/CSU
 V7950 2/1-5/16 G Olsen
This late start class begins 2/1/24. This course to

STAT-C1000 4 Units
Introduction to Statistics
 Transfers to UC/CSU
 V7951 2/1-5/16 G Olsen
This late start class begins 2/1/24. This course to

STAT-C1000 4 Units
Introduction to Statistics
 Transfers to UC/CSU
 V7952 2/1-5/16 G Olsen
This late start class begins 2/1/24. This course to

STAT-C1000 4 Units
Introduction to Statistics
 Transfers to UC/CSU
 V7953 1/18-5/16 T Matsumoto
Zero Cost Textbook

STAT-C1000 4 Units
Introduction to Statistics
 Transfers to UC/CSU
 V7954 1/18-5/16 G Olsen
This course totals 72 hours of instruction.

STAT-C1000E 5 Units
Introduction to Statistics With Support
 Transfers to UC/CSU
 V7944 1/18-5/16 T Matsumoto
Zero Cost Textbook

SOCIAL WORK AND HUMAN SERVICES

SWHS-1 3 Units
Introduction to Social Work and Human SE Introduction to Social Work and Human Services
 Transfers to CSU
 V7721 1/18-5/16 C Perkins
This online class uses Canvas (https://redwoods.instructure.com). Students are strongly encouraged to watch the Welcome and Course Orientation videos provided to all students in the Canvas classroom. These will help orient you to the course goals.

SWHS-2 3 Units
Field Seminar in Social Work and Human Services
 Transfers to CSU
 V7723 1/18-5/16 C Perkins
Students in this section also enroll in SWHS-42-V8462. This online class uses Canvas (https://redwoods.instructure.com) and meets on four occasions via Zoom. Live classroom Zoom sessions will take place on the last Wednesday of the month from 1:15 - 3:15

SWHS-42 2 Units
Supervised Occupational Work Experience
 Transfers to CSU
 V8463 1/18-5/16 C Perkins
Students in this section also enroll in SWHS-2-E7722. This course is designed to represent the time each student spends in their volunteer/work-related field placement.

SWHS-42 2 Units
Supervised Occupational Work Experience
 Transfers to CSU
 V8464 1/18-5/16 C Perkins
Students in this section also enroll in SWHS-2-V7723. This course is designed to represent the time each student spends in their volunteer/work-related field placement.

WORK

WORK-221 0 Units
Stress Management
 Not Transferrable
 V9120 4/7-4/18 Staff
This is an online synchronous class, students must meet online during set dates and times. This is a CCC specific course.

WORK-222 0 Units
Communication in the Workplace
 Not Transferrable
 V9121 4/21-5/2 Staff
This is an online synchronous class, students must meet online during set dates and times. This is a CCC specific course.

WORK-225 0 Units
Decision Making and Problem Solving
 Not Transferrable
 V9122 5/5-5/16 Staff
This is an online synchronous class, students must meet online during set dates and times. This is a CCC specific course.



Eureka Campus Face-To-Face Classes

ADDICTION STUDIES

ADCT-10 3 Units
Introduction to Addiction Studies
 Transfers to CSU
 E7606 1/18-5/16 S Bibona
 Lec: Mon, Weds 10:05a-11:30a;
 Loc: HM; Rm: HU215

ADCT-11 3 Units
Pharmacology of Alcohol and Other Drugs
 Transfers to CSU
 E7608 1/18-5/16 S Altschuler
 Lec: Tue, Thu 01:15p-02:40p; Loc: HM; Rm: HU215

ADCT-12 3 Units
Substance Abuse: Law, Prevention, Treatment & Ethics
 Transfers to CSU
 E7609 1/18-5/16 S Altschuler
 Lec: Tue, Thu 10:05a-11:30a;

ADCT-18 3 Units
Co-Occurring Disorders: Addictions and Mental Health
 Transfers to CSU
 E7611 1/18-5/16 S Bibona
 Lec: Tue, Thu 02:50p-04:15p; Loc: LRC; Rm: 105
This class meets in person on the Eureka campus. Additional students will join via interactive live video from other sites.

ADCT-42 2.5 Units
Supervised Occupational Work Experience II
 Transfers to CSU
 E8515 1/18-5/16 S Altschuler
 Field Experience: DHR
 12:00a-12:00a;
 135 hours required

AGRICULTURE

AG-17 3 Units
Introduction to Soil Science
 Transfers to UC/CSU
 E7616 1/18-5/16 R Landry
 Lec/Lab: Tue, Thu 09:00a-11:35a;
 Loc: AT; Rm: 108

AG-21 3 Units
Plant Propagation/ Production
 Transfers to UC/CSU
 E7618 1/18-5/16 Staff
 Lec/Lab: Fri 08:40a-02:00p;

AG-23 3 Units
Introduction to Plant Science
 Transfers to UC/CSU
 E7617 1/18-5/16 R Landry
 Lec/Lab: Mon, Weds
 09:00a-11:35a; Loc: AT; Rm: 108

AG-32 3 Units
Agriculture Economics
 Transfers to UC/CSU
 E7619 1/18-5/16 R Landry
 Lec: Mon, Weds 01:15p-02:40p;

AG-44 1 Units
Agriculture Leadership
 Transfers to CSU
 E8465 1/18-5/16 S Dale
 Lec/Lab: Thu 05:05p-07:10p; Loc: HM; Rm: HU215

ADMINISTRATION OF JUSTICE

AJ-7 3 Units
Current Issues in Criminal Justice Justice
 Transfers to UC/CSU
 E8586 1/18-5/16 J Schutt
 Lec: Tue, Thu 02:50p-04:15p; Loc: AJ; Rm: 108

AJ-81 8 Units
Basic Law Enforcement Academy Module III
 Transfers to CSU
 E8812 1/6-2/13 M Perkins
 Lec/Lab: Mon, Tue, Weds, Thu, Fri 06:30a-05:00p; Loc: AJ; Rm: 101

AJ-82 8.5 Units
Basic Law Enforcement Academy Module II
 Transfers to CSU
 E8813 2/18-4/5 M Perkins
 Lec/Lab: Mon, Tue, Weds, Thu, Fri 06:30a-05:00p; Loc: AJ; Rm: 101

AJ-83 16 Units
Basic Law Enforcement Academy Module I
 Transfers to CSU
 E8814 4/7-7/11 M Perkins
 Lec/Lab: Mon, Tue, Weds, Thu, Fri 06:30a-05:00p; Loc: AJ; Rm: 101

ANTHROPOLOGY

ANTH-1 3 Units
Introduction to Biological Anthropology
 Transfers to UC/CSU
 E7572 1/18-5/16 J Shaw
 Lec: Mon, Weds 11:40a-01:05p;
 Loc: HM; Rm: HU127

ANTH-3 3 Units
Introduction to Cultural Anthropology
 Transfers to UC/CSU
 E7574 1/18-5/16 J Shaw
 Lec: Mon, Weds 01:15p-02:40p;
 Loc: HM; Rm: HU127

ANTH-5 3 Units
Great Archaeological Discoveries
 Transfers to UC/CSU
 E7576 1/18-5/16 J Shaw
 Lec: Tue, Thu 11:40a-01:05p; Loc: HM; Rm: HU127

AQUACULTURE

AQUA-1 3 Units
Intro to Aquaculture
Transfers to UC/CSU
E7625 1/18-5/16 J Iniguez
Lec: Tue, Thu 10:05a-11:30a;

AQUA-2 4 Units
Applied Aquaculture
Transfers to CSU
E7626 1/18-5/16 J Iniguez
Lec: Mon, Weds 10:05a-11:30a;
Loc: ; Rm: ; Lab: Weds
12:15p-03:25p;

AQUA-3 3 Units
Introduction to Fisheries
Transfers to CSU
E7627 1/18-5/16 J Iniguez
Lec: Tue, Thu 04:30p-05:55p;

AQUA-5 3 Units
Principles of Mariculture
Transfers to CSU
E8466 1/18-5/16 J Iniguez
Lec: Tue 12:15p-02:20p; Loc: ; Rm:
; Lab: Thu 12:15p-03:25p;

ART

ART-10 3 Units
Color and Design
Transfers to UC/CSU
E7740 1/18-5/16 L Kessner
Lec/Lab: Tue, Thu 11:35a-02:45p;
Loc: CAC; Rm: 102

ART-11 3 Units
Three-Dimensional Design
Transfers to UC/CSU
E7741 1/18-5/16 B Funke
Lec/Lab: Mon, Weds
02:50p-06:00p; Loc: CA; Rm: 107

ART-15 3 Units
Interior Craft and Design Development
Transfers to UC/CSU
E7742 1/18-5/16 N Margulis
Lec: Tue 08:55a-10:00a; Loc: CAC;
Rm: 107; Lab: Tue 10:05a-04:35p;
Loc: CAC; Rm: 107

ART-17 3 Units
Basic Drawing
Transfers to UC/CSU
E7743 1/18-5/16 D Smith
Lec/Lab: Tue, Thu 08:15a-11:25a;
Loc: CAC; Rm: 102

ART-17 3 Units
Basic Drawing
Transfers to UC/CSU
E7744 1/18-5/16 B Funke
Lec/Lab: Mon, Weds
11:35a-02:45p; Loc: CAC; Rm: 102

ART-19 3 Units
Figure Drawing
Transfers to UC/CSU
E7747 1/18-5/16 L Galvan
Lec/Lab: Mon, Weds
02:50p-06:00p; Loc: CAC; Rm:
104

ART-1A 3 Units
Art History: Pre-History to Gothic
Transfers to UC/CSU
E7748 1/18-5/16 G Gopinath
Lec: Mon, Weds 11:40a-01:05p;
Loc: CAC; Rm: 300

ART-1A 3 Units
Art History: Pre-History to Gothic
Transfers to UC/CSU
E9178 1/18-5/16 S Schroeder
Lec: Tue, Thu 08:30a-09:55a; Loc:
CAC; Rm: 300

ART-2 3 Units
Introduction to Art
Transfers to UC/CSU
E7755 1/18-5/16 L Kessner
Lec/Lab: Tue, Thu 02:50p-06:00p;
Loc: CAC; Rm: 102

ART-23 3 Units
Painting
Transfers to UC/CSU
E7754 1/18-5/16 L Galvan
Lec/Lab: Tue, Thu 11:35a-02:45p;
Loc: CAC; Rm: 104

ART-31A 3 Units
Introduction to Ceramics (Hand Building)
Transfers to UC/CSU
E7757 1/18-5/16 M Mallahan
Lec/Lab: Tue, Thu 11:35a-02:45p;
Loc: CAC; Rm: 106

ART-31B 3 Units
Introduction to Ceramics (Wheel)
Transfers to UC/CSU
E7758 1/18-5/16 S Sullivan
Lec/Lab: Tue, Thu 08:15a-11:25a;
Loc: CAC; Rm: 106

ART-35 3 Units
Digital Photography
Transfers to UC/CSU
E7759 1/18-5/16 D Wilson
Lec/Lab: Mon, Weds
02:50p-06:00p; Loc: CAC; Rm:
206

ART-4 3 Units
Art Appreciation
Transfers to UC/CSU
E7772 1/18-5/16 L Galvan
Lec: Mon, Weds 01:15p-02:40p;
Loc: CAC; Rm: 208

ART-41 3 Units
Introduction to Digital Art
Transfers to UC/CSU
E7761 1/18-5/16 A Smithson
Lec/Lab: Tue, Thu 03:00p-06:10p;
Loc: CAC; Rm: 206

ART-50L 1 Units
Studio Art Lab
Transfers to CSU
E7776 1/18-5/16 N Kita
Lab: Fri 12:30p-03:40p; Loc: CAC;
Rm: 102
This media-inclusive studio art lab course provides time and space for students to conceive of and execute an independent two-dimensional art

project and/or make progress on two-dimensional studio art assignments with the guidance of an art faculty.

ART-50L 1 Units
Studio Art Lab
Transfers to CSU
E7777 1/18-5/16 N Kita
Lab: Fri 09:00a-12:10p; Loc: CAC;
Rm: 106

This media-inclusive studio art lab course provides time and space for students to conceive of and execute an independent three-dimensional art project and/or make progress on three-dimensional studio art assignments with the guidance of an art faculty.

ART-50L 1 Units
Studio Art Lab
Transfers to CSU
E7780 1/18-5/16 M Whiteley
Lab: Fri 12:30p-03:40p; Loc: CAC;
Rm: 206

This media-inclusive studio art lab course provides time and space for students to conceive of and execute an independent digital art project and/or make progress on digital studio art assignments with the guidance of an art faculty.

ART-60 3 Units
Introduction to Jewelry and Metalsmithing
Transfers to CSU
E7783 1/18-5/16 E Rose
Lec/Lab: Mon, Weds
06:00p-09:10p; Loc: CAC; Rm:
107

ART-60L 1 Units
Jewelry and Metalsmithing Lab
Transfers to CSU
E7784 1/18-5/16 E Rose
Lab: Mon, Weds 04:00p-05:50p;
This course provides individualized instruction within the classroom context of Art 60. Students will be encouraged to pursue independent directions in jewelry and metalsmithing.

ASTRONOMY

ASTRO-10 3 Units
Introduction to Astronomy
Transfers to UC/CSU
E7578 1/18-5/16 J Pedicino
Lec: Mon, Weds 10:05a-11:30a;
Loc: HM; Rm: HU129

ASTRO-10 3 Units
Introduction to Astronomy
Transfers to UC/CSU
E7579 1/18-5/16 J Pedicino
Lec: Mon, Weds 11:40a-01:05p;
Loc: HM; Rm: HU129

ASTRO-11 3 Units
The Solar System and Space Exploration
Transfers to UC/CSU
E7583 1/18-5/16 J Pedicino
Lec: Mon, Weds 01:15p-02:40p;
Loc: HM; Rm: HU129

ASTRO-30 2 Units
Teaching Science With Science Fiction
Transfers to CSU
E7584 1/18-5/16 J Pedicino
Lec: Mon 02:50p-04:55p; Loc:
HM; Rm: HU129

ASTRO-99 1 Units
Science Mysteries: Are UFOs Real?
Transfers to CSU
E7585 1/18-5/16 J Pedicino
Lec: Weds 02:50p-03:55p; Loc:
HM; Rm: HU129

AUTOMOTIVE TECHNOLOGY

AT-14 4 Units
Manual Drivetrain and Axle
Transfers to CSU
E7629 1/18-5/16 A Florez
Lec/Lab: Tue, Thu 08:15a-12:35p;
Loc: AT; Rm: 128

AT-20 4 Units
Automotive Suspension and Steering Systems
Transfers to CSU
E7630 1/18-5/16 A Florez
Lec/Lab: Tue, Thu 01:15p-05:35p;
Loc: AT; Rm: 128

AT-24 4 Units
Engine Performance
Transfers to CSU
E7631 1/18-5/16 E Shull
Lec/Lab: Mon, Weds
08:15a-12:35p; Loc: AT; Rm: 128

AT-26 4 Units
Automotive Air Conditioning and Heating
Transfers to CSU
E7632 1/18-5/16 A Florez
Lec/Lab: Mon, Weds
01:15p-05:35p; Loc: AT; Rm: 128

AT-30 4 Units
Automatic Transmission/Transaxle
Transfers to CSU
E7633 1/18-5/16 E Shull
Lec/Lab: Mon, Weds
05:45p-10:05p; Loc: AT; Rm: 128

BIOLOGY

BIOL-1 4 Units
General Biology
Transfers to UC/CSU
E8299 1/18-5/16 J Patmore
Lab: Fri 11:40a-02:50p; Loc:
SC; Rm: SC108; Lec: Tue, Thu
02:50p-04:15p; Loc: HM; Rm:
HU112

BIOL-1 4 Units
General Biology
Transfers to UC/CSU
E8301 1/18-5/16 K Orr
Lab: Mon 06:05p-09:15p; Loc:
SC; Rm: SC108; Lec: Tue, Thu
06:05p-07:30p; Loc: HM; Rm:
HU112

BIOL-1 4 Units
General Biology
 Transfers to UC/CSU
 E8302 1/18-5/16 M Best
 Lab: Mon 11:00a-02:10p; Loc:
 SC; Rm: SC108; Lec: Mon, Weds
 08:45a-10:20a; Loc: CAC; Rm: 300

BIOL-1 4 Units
General Biology
 Transfers to UC/CSU
 E8303 1/18-5/16 M Best
 Lec: Mon, Weds 08:45a-10:20a;
 Loc: CAC; Rm: 300; Lab: Weds
 02:00p-05:10p; Loc: SC; Rm:
 SC108

BIOL-1 4 Units
General Biology
 Transfers to UC/CSU
 E8313 1/18-5/16 J Patmore
 Lab: Fri 08:20a-11:30a; Loc:
 SC; Rm: SC108; Lec: Tue, Thu
 02:50p-04:15p; Loc: HM; Rm:
 HU112

BIOL-15 4 Units
Marine Biology
 Transfers to UC/CSU
 E8298 1/18-5/16 J Kelly
 Lab: Fri 10:00a-01:10p; Loc: SC;
 Rm: SC102; Lec: Mon, Weds
 10:00a-11:30a; Loc: SC; Rm: SC210

BIOL-20 4 Units
Natural History of California
 Transfers to CSU
 E8308 1/18-5/16 K Reiss
 Lec: Mon, Weds 11:40a-01:05p;
 Loc: SC; Rm: SC210; Lab: Thu
 01:15p-04:25p; Loc: SC; Rm:
 SC102

BIOL-3 4 Units
Fundamental Cell Biology
 Transfers to UC/CSU
 E8311 1/18-5/16 J Kelly
 Lec: Mon, Weds 01:15p-02:40p;
 Loc: SC; Rm: SC210; Lab: Weds
 02:50p-06:00p; Loc: SC; Rm:
 SC104

BIOL-4 4 Units
General Zoology With Lab
 Transfers to UC/CSU
 E8312 1/18-5/16 K Reiss
 Lec: Mon, Weds 08:30a-09:35a;
 Loc: SC; Rm: SC210; Lab: Tue,
 Thu 10:00a-01:10p; Loc: SC; Rm:
 SC102

BIOL-5 4 Units
General Botany With Lab
 Transfers to UC/CSU
 E8300 1/18-5/16 J Hogue
 Lec: Tue, Thu 08:40a-09:45a;
 Loc: HM; Rm: HU112; Lab: Tue,
 Thu 10:30a-01:40p; Loc: SC; Rm:
 SC108

BIOL-5 4 Units
General Botany With Lab
 Transfers to UC/CSU
 E8817 1/18-5/16 J Hogue
 Lab: Tue, Thu 02:00p-05:10p; Loc:
 SC; Rm: SC108; Lec: Tue, Thu
 08:40a-09:45a; Loc: HM; Rm:
 HU112

BIOL-6 4 Units
Human Anatomy
 Transfers to UC/CSU
 E8314 1/18-5/16 G Holtski
 Mon, Weds 08:30a-11:40a; Loc:
 SC; Rm: SC102
hybrid

BIOL-6 4 Units
Human Anatomy
 Transfers to UC/CSU
 E8315 1/18-5/16 G Holtski
 Mon, Weds 01:15p-04:25p; Loc:
 SC; Rm: SC102
hybrid

BIOL-7 4 Units
Human Physiology
 Transfers to UC/CSU
 E8318 1/18-5/16 R Reiner
 Lec: Mon, Weds 01:15p-02:40p;
 Loc: SC; Rm: SC206; Lab: Weds
 10:05a-01:10p; Loc: SC; Rm: SC104

BUSINESS

BUS-10 3 Units
Introduction to Business
 Transfers to UC/CSU
 E7634 1/18-5/16 C Gaines
 Lec: Mon, Weds 10:05a-11:30a;
 Loc: HM; Rm: HU110

BUS-14 3 Units
**Finite Math for Business
 and Economics**
 Transfers to UC/CSU
 E8924 1/18-5/16 K Luke
 Lec: Mon, Weds 10:05a-11:30a;
 Loc: HM; Rm: HU204

BUS-18 3 Units
Business Law
 Transfers to UC/CSU
 E7641 1/18-5/16 E Naffah
 Lec: Weds 06:05p-09:10p;

BUS-1B 4 Units
Managerial Accounting
 Transfers to UC/CSU
 E7643 1/18-5/16 Staff
 Lec/Lab: Tue, Thu 11:40a-02:50p;
 Loc: HM; Rm: HU112

BUS-52 3 Units
Business Communications
 Transfers to CSU
 E7647 1/18-5/16 Staff
 Lec: Mon, Weds 04:30p-05:55p;
 Loc: HM; Rm: HU218

CHEMISTRY

CHEM-100 4 Units
**Preparation for
 General Chemistry**
 Not Transferable
 E9274 1/18-5/16 B Barraza
 Lec: Tue, Thu 12:05p-02:10p;

CHEM-1A 5 Units
General Chemistry
 Transfers to UC/CSU
 E7800 1/18-5/16 D Duberow
 Lab: Tue, Thu 10:00a-01:10p; Loc:
 SC; Rm: SC114; Lec: Mon, Weds
 10:05a-11:30a; Loc: SC; Rm: SC114
Low Cost Textbook

CHEM-1A 5 Units
General Chemistry
 Transfers to UC/CSU
 E7801 1/18-5/16 D Duberow
 Lec: Mon, Weds 01:15p-02:40p;
 Loc: SC; Rm: SC114; Lab: Tue, Thu
 01:15p-04:25p; Loc: SC; Rm: SC114
Low Cost Textbook

CHEM-1B 5 Units
General Chemistry
 Transfers to UC/CSU
 E7802 1/18-5/16 P Farnham
 Lec: Tue, Thu 01:15p-02:40p;
 Loc: SC; Rm: SC106; Lab: Tue,
 Thu 02:45p-05:55p; Loc: SC; Rm:
 SC106

CHEM-2 5 Units
Introduction to Chemistry
 Transfers to UC/CSU
 E7803 1/18-5/16 A Sartori
 Lab: Fri 10:00a-01:10p; Loc: SC;
 Rm: SC106; Lec: Mon, Weds, Thu
 11:40a-12:55p; Loc: SC; Rm: SC106

CHEM-2 5 Units
Introduction to Chemistry
 Transfers to UC/CSU
 E7804 1/18-5/16 A Sartori
 DHR 12:00a-12:00a; Loc: ; Rm:
 ; Lab: DHR 12:00a-12:00a;
 Loc: SC; Rm: SC104; Lab:
 Fri 01:15p-04:25p; Loc: SC;
 Rm: SC106; Lec: Mon, Weds
 01:15p-02:30p; Loc: SC; Rm:
 SC106; Lec: Thu 01:15p-02:30p;
 Loc: SC; Rm: SC104

CHEM-2 5 Units
Introduction to Chemistry
 Transfers to UC/CSU
 E7805 1/18-5/16 A Sartori
 Lab: Fri 05:30p-08:40p; Loc: SC;
 Rm: SC114; Lec: Mon, Weds, Thu
 05:30p-06:45p; Loc: SC; Rm:
 SC114

CHEM-3 4 Units
**Introduction to Organic
 and Biochemistry**
 Transfers to UC/CSU
 E7806 1/18-5/16 D Duberow
 Lec: Mon, Weds 11:40a-01:05p;
 Loc: SC; Rm: SC114; Lab: Fri
 10:00a-01:10p; Loc: SC; Rm: SC114
Low Cost Textbook

CINEMA

CINE-1 3 Units
**Cinema History: From
 Its Origins to the
 Coming of Sound**
 Transfers to UC/CSU
 E8370 1/18-5/16 G Gopinath
 Lec: Weds 02:50p-06:00p; Loc:
 CAC; Rm: 300

CINE-2 3 Units
**Cinema History - From
 the Coming of Sound
 to the Present**
 Transfers to UC/CSU
 E8371 1/18-5/16 M Cartier
 Lec: Mon 02:50p-06:00p; Loc:
 CAC; Rm: 300

COMPUTER INFORMATION SYSTEMS

CIS-1 4 Units
**Computer Information
 Systems**
 Transfers to UC/CSU
 E7650 1/18-5/16 C McGlaughlin
 Tue 10:05a-01:15p; Loc: HM; Rm:
 HU210
hybrid

CIS-12 4 Units
Programming Fundamentals
 Transfers to UC/CSU
 E8997 1/18-5/16 T Hartman
 Lec/Lab: Mon, Weds
 02:15p-05:25p; Loc: HM; Rm:
 HU210

CIS-18 4 Units
**Object Oriented
 Programming - Java**
 Transfers to UC/CSU
 E7653 1/18-5/16 T Hartman
 Lec/Lab: Tue, Thu 02:15p-05:25p;
 Loc: HM; Rm: HU210

CIS-30 4 Units
**CCNA: Computer
 Network Fundamentals**
 Transfers to CSU
 E7654 1/18-5/16 A Murphy
 Distance Education: Weds
 10:05a-01:15p; Loc: HM; Rm:
 HU214; Lab: DHR 12:00a-12:00a;
*This course will have an online
 component as well as scheduled
 on campus meetings. Instructional
 material fees: \$15*

CIS-50 4 Units
**Introduction to Data Base
 Management Systems**
 Transfers to CSU
 E8999 1/18-5/16 T Hartman
 Lab: Weds 02:15p-05:25p;
*This is a hybrid course that will
 online as well as scheduled in-person
 meetings on Wednesday, 2:15pm-
 5:25pm.*

CIS-98 4 Units
**PC Computer Repair
 and Maintenance**
 Transfers to CSU
 E7657 1/18-5/16 A Murphy
 Tue 10:05a-01:15p; Loc: HM; Rm:
 HU214
Hybrid

CIS-98 4 Units
**PC Computer Repair
 and Maintenance**
 Transfers to CSU
 E8566 1/18-5/16 A Murphy
 Lab: Mon 10:05a-01:15p; Loc: HM;
 Rm: HU214; *Meeting the
 following 7 mandatory Mondays on
 the Eureka Campus: 1/27, 2/3, 2/10,
 3/24, 4/21, 4/28, and 5/5 from 10:05am
 to 1:15pm in HU214; all other weekly
 meetings are asynchronous online
 meetings.*

COMMUNICATION STUDIES

COMM-2 3 Units

Introduction to Communication Theory

Transfers to UC/CSU
E7597 1/18-5/16 C Lancaster
Lec: Thu 10:05a-11:30a;
This class requires both in person and online components. All meeting times and days are listed. You need access to a device with an internet connection. No additional technology-related purchases will be required.

COMM-6 3 Units

Small Group Communication

Transfers to UC/CSU
E7598 1/18-5/16 L Sayles
Lec: Thu 01:15p-02:40p; Loc: HM;
Rm: HU213
Zero Cost Textbook

COMM-6 3 Units

Small Group Communication

Transfers to UC/CSU
E9184 1/18-5/16 L Sayles
Lec: Thu 11:40a-01:05p; Loc: HM;
Rm: HU213
This hybrid class has online and in-person class meetings.

COMM-7 3 Units

Interpersonal Communication

Transfers to UC/CSU
E8845 1/18-5/16 L Sayles
Lec: Tue 01:15p-02:40p; Loc: HM;
Rm: HU213

COMM-C1000 3 Units

Introduction to Public Speaking

Transfers to UC/CSU
E7589 1/18-5/16 R Rhodes
Lec: Mon, Weds 10:05a-11:30a;
Loc: HM; Rm: HU213

COMM-C1000 3 Units

Introduction to Public Speaking

Transfers to UC/CSU
E7590 1/18-5/16 R Rhodes
Lec: Mon, Weds 11:40a-01:05p;
Loc: HM; Rm: HU213

COMM-C1000 3 Units

Introduction to Public Speaking

Transfers to UC/CSU
E7591 1/18-5/16 T Pearson
Lec: Tue, Thu 01:15p-02:40p; Loc: HM; Rm: HU207

COMM-C1000 3 Units

Introduction to Public Speaking

Transfers to UC/CSU
E7592 1/18-5/16 L Sayles
Lec: Tue, Thu 10:05a-11:30a; Loc: HM; Rm: HU207
Zero Cost Textbook

COMM-C1000 3 Units

Introduction to Public Speaking

Transfers to UC/CSU
E7593 1/18-5/16 T Pearson
Lec: Tue, Thu 11:40a-01:05p; Loc: HM; Rm: HU213

COMM-C1000 3 Units

Introduction to Public Speaking

Transfers to UC/CSU
E8864 1/18-5/16 C Lancaster
Lec: Mon, Weds 10:05a-11:30a;

COMM-C1000 3 Units

Introduction to Public Speaking

Transfers to UC/CSU
E8865 1/18-5/16 C Lancaster
Lec: Mon, Weds 01:15p-02:40p;

CONSTRUCTION TECHNOLOGY

CT-16 3 Units

Architectural Millwork

Transfers to CSU
E8468 1/18-5/16 Staff
Lec/Lab: Tue, Thu 05:35p-09:05p;
Loc: AT; Rm: 109
Additional fee: \$20

CT-21A 3 Units

Survey of Wood Technology

Transfers to CSU
E7658 1/18-5/16 R Hafar
Lec: Mon 05:30p-06:35p; Loc: AT; Rm: 109; Lab: Mon, Weds 06:40p-09:50p; Loc: AT; Rm: 109
Instructional material fees: \$50

CT-21A 3 Units

Survey of Wood Technology

Transfers to CSU
E7660 1/18-5/16 L Bechler
Lec: Fri 09:20a-10:25a; Loc: AT; Rm: 109; Lab: Fri 10:40a-05:10p; Loc: AT; Rm: 109
Instructional material fees: \$50

CT-21B 3 Units

Intermediate Wood Technology

Transfers to CSU
E7659 1/18-5/16 R Hafar
Lab: Mon, Weds 06:40p-09:50p;
Loc: AT; Rm: 109; Lec: Weds 05:30p-06:35p; Loc: AT; Rm: 109
Instructional material fee: \$20

CT-21B 3 Units

Intermediate Wood Technology

Transfers to CSU
E7661 1/18-5/16 L Bechler
Lec: Fri 08:00a-09:05p; Loc: AT; Rm: 109; Lab: Fri 10:40a-05:10p; Loc: AT; Rm: 109
Instructional material fee: \$20

CT-25 2 Units

OSHA Construction Safety

Transfers to CSU
E7662 2/1-3/1 L Bechler
Lec: Sat 09:00a-04:05p; Loc: AT; Rm: 109
This late start class begins on 2/1/25.

CT-32 1 Units

Photovoltaic Design and Installation Installation

Transfers to CSU
E7664 3/26-5/16 R Satava
Lec/Lab: DHR 12:00a-12:00a;
Loc: ; Rm: ; Lec/Lab: Weds 06:05p-08:35p; Loc: HM; Rm: HU129
This requires an additional 8 hours at the Residential Construction house on a Sunday during the semester.

CT-55 2 Units

Advanced Wood Technology

Transfers to CSU
E7665 1/18-5/16 R Hafar
Lab: Mon, Weds 06:40p-09:50p;
Loc: AT; Rm: 109
Instructional material fee: \$20

CT-55 2 Units

Advanced Wood Technology

Transfers to CSU
E7666 1/18-5/16 L Bechler
Lab: Fri 10:20a-04:50p; Loc: AT; Rm: 109
Instructional material fee: \$20

CT-57B 3 Units

Cabinetmaking and Millwork II

Transfers to CSU
E7667 1/18-5/16 R Hafar
Lec: Mon 12:40p-01:45p; Loc: AT; Rm: 109; Lab: Mon, Weds 01:50p-05:00p; Loc: AT; Rm: 109

CT-57D 3 Units

Cabinetmaking and Millwork IV

Transfers to CSU
E7668 1/18-5/16 R Hafar
Lab: Mon, Weds 01:50p-05:00p;
Loc: AT; Rm: 109; Lec: Weds 12:40p-01:45p; Loc: AT; Rm: 109

CT-72 2 Units

Electrical Codes and Standards

Transfers to CSU
E7669 1/18-5/16 R Satava
Lec: Tue 06:05p-08:10p; Loc: AT; Rm: 106

CT-78B 2 Units

Residential Wiring II

Transfers to CSU
E7670 1/18-5/16 R Satava
Lec/Lab: Thu 05:30p-09:45p; Loc: HM; Rm: HU129

CT-78D 2 Units

Residential Wiring IV

Transfers to CSU
E7671 1/18-5/16 R Satava
Lec/Lab: Thu 06:35p-10:50p; Loc: HM; Rm: HU129

CT-81 3 Units

Carpentry Theory II

Transfers to CSU
E7672 1/18-5/16 D Glavich
Lec: Mon 09:00a-12:10p; Loc: HM; Rm: HU125

CT-91 3 Units

Beginning Carpentry II

Transfers to CSU
E7673 1/18-5/16 D Glavich
Lab: Tue, Thu 08:00a-12:35p; Loc: AT; Rm: 109

CT-91 3 Units

Beginning Carpentry II

Transfers to CSU
E7675 1/18-5/16 D Glavich
Lab: Tue, Thu 01:00p-05:35p; Loc: AT; Rm: 109

CT-94 3 Units

Finish Carpentry

Transfers to CSU
E8551 1/18-5/16 Staff
Lec/Lab: Mon, Weds 01:15p-04:50p;

CT-96 3 Units

Intermediate Carpentry II

Transfers to CSU
E7674 1/18-5/16 D Glavich
Lab: Tue, Thu 08:00a-12:35p; Loc: AT; Rm: 109

CT-96 3 Units

Intermediate Carpentry II

Transfers to CSU
E7676 1/18-5/16 D Glavich
Lab: Tue, Thu 01:00p-05:35p; Loc: AT; Rm: 109

DENTAL ASSISTING

DA-163 2 Units

Advanced Dental Assisting Science

Not Transferrable
E8329 1/18-5/16 H Reed
Lec: Thu 08:30a-10:35a; Loc: AT; Rm: 115

DA-164 3 Units

Adv Dent Assist Functions in Dent Specia

Not Transferrable
E8330 1/18-5/16 H Reed
Lab: Fri 07:30a-10:40a; Loc: AT; Rm: 112; Lec: Thu 12:30p-02:35p; Loc: AT; Rm: 115

DA-164 3 Units

Adv Dent Assist Functions in Dent Specia

Not Transferrable
E8331 1/18-5/16 H Reed
Lab: Fri 10:45a-01:55p; Loc: AT; Rm: 112; Lec: Thu 12:30p-02:35p; Loc: AT; Rm: 115

DA-165 2 Units

Advanced Dental Radiography

Not Transferrable
E8332 1/18-5/16 H Reed
Lab: Tue 08:30a-11:40a; Loc: AT; Rm: 112; Lec: Tue 12:00p-01:05p; Loc: AT; Rm: 115

DA-165 2 Units

Advanced Dental Radiography

Not Transferrable
E8333 1/18-5/16 H Reed
Lab: Tue 01:10p-04:20p; Loc: AT; Rm: 112; Lec: Tue 12:00p-01:05p; Loc: AT; Rm: 115

DA-166 0.5 Units
DA Funct. in Dental Practice Management
 Not Transferrable
 E8334 1/6-1/10H Reed
 Lec: DHR 08:30a-10:00a; Loc: AT;
 Rm: 115; Lab: DHR 10:15a-11:45a;
 Loc: AT; Rm: 112

DA-167 6 Units
Adv DA funct & duties (clinical exp)
 Not Transferrable
 E8335 1/18-5/16 H Reed
 Lab: Mon, Weds 08:30a-04:35p;
 Loc: AT; Rm: 112; Lec: Thu
 10:45a-11:50a; Loc: AT; Rm: 115

DRAMA

DRAMA-24 3 Units
Introduction to Theatre
 Transfers to UC/CSU
 E7586 1/18-5/16 L Satlof
 Lec: Tue, Thu 01:15p-02:40p; Loc:
 CAC; Rm: 208

DRAMA-30A 3 Units
Acting I
 Transfers to UC/CSU
 E7587 1/18-5/16 L Satlof
 Lec/Lab: Tue, Thu 02:50p-05:20p;
 Loc: TH; Rm: 104

DRAMA-30B 3 Units
Acting II
 Transfers to UC/CSU
 E7588 1/18-5/16 L Satlof
 Lec/Lab: Tue, Thu 02:50p-05:20p;
 Loc: TH; Rm: 104

DRAFTING TECHNOLOGY

DT-23 3 Units
Engineering Design Graphics
 Transfers to CSU
 E7718 1/18-5/16 Staff
 Lec/Lab: Tue, Thu 06:05p-08:35p;
 Loc: AT; Rm: 105

DT-23 3 Units
Engineering Design Graphics
 Transfers to CSU
 E8470 1/18-5/16 Staff
 Lec/Lab: Mon, Weds
 03:00p-05:30p; Loc: AT; Rm: 105

DT-25 4 Units
Computer Aided Design and Drafting
 Transfers to UC/CSU
 E8471 1/18-5/16 J Carpenter
 Lec/Lab: Mon, Weds
 06:05p-09:15p; Loc: AT; Rm: 105

DT-71 3 Units
Architectural Drafting Fundamentals
 Transfers to UC/CSU
 E8768 1/18-5/16 Staff
 Lec/Lab: Tue, Thu 06:05p-08:35p;
 Loc: AT; Rm: 105

EARLY CHILDHOOD EDUCATION

ECE-1 3 Units
Principles and Practices of Teaching Young Children
 Transfers to CSU
 E7677 1/18-5/16 D Kalvaitis
 Lec: Mon 01:15p-04:25p; Loc: AT;
 Rm: 106

ECE-10 3 Units
Field Experience in Early Childhood Education
 Transfers to CSU
 E7681 1/18-5/16 A Chivington
 Lab: DHR 12:00a-12:00a; Loc: ;
 Rm: ; Lec: Weds 04:25p-05:30p;
 Loc: CDC; Rm: 101

ECE-2 3 Units
Child Growth and Development
 Transfers to CSU
 E7678 2/13-5/16 D Kalvaitis
 Lec: Thu 06:05p-10:10p; Loc:
 CDC; Rm: 101

ECE-5 3 Units
The Child in the Family and in the Community
 Transfers to CSU
 E7679 1/18-5/16 D Kalvaitis
 Lec: Tue 06:05p-09:15p; Loc:
 CDC; Rm: 101

ECE-7 3 Units
Introduction to Early Childhood Curriculum
 Transfers to CSU
 E7680 1/18-5/16 A Chivington
 Lab: DHR 12:00a-12:00a; Loc: ;
 Rm: ; Lec: Weds 01:15p-03:20p;
 Loc: AT; Rm: 105

ECONOMICS

ECON-1 3 Units
Macroeconomics
 Transfers to UC/CSU
 E7698 1/18-5/16 M Dennis
 Lec: Tue, Thu 11:40a-01:05p;

ECON-10 3 Units
Microeconomics
 Transfers to UC/CSU
 E7689 1/18-5/16 M Dennis
 Lec: Mon, Weds 10:05a-11:30a;
 Loc: HM; Rm: HU112

EDUCATION

EDUC-207 0 Units
Getting Started With Computers
 Not Transferrable
 E9108 1/18-5/16 Staff
 Lab: Tue, Thu 04:30p-06:00p;
 Loc: Eureka Downtown Site; Rm:
 502
*This course meets at the Eureka
 Downtown Campus. Instruction for
 this course is in Spanish.*

EDUC-207 0 Units
Getting Started With Computers
 Not Transferrable
 E9113 1/18-5/16 Staff
 Lab: Sat 09:30a-11:30a; Loc:
 Eureka Downtown Site; Rm: 301
*This course meets on the Downtown
 campus.*

EDUC-225 0 Units
High School Equivalency/ GED Preparation
 Not Transferrable
 E9106 1/18-5/16 Staff
 Lab: Mon, Weds 02:00p-04:00p;
 Loc: Eureka Downtown Site; Rm:
 502
*This course meets at the Eureka
 Downtown Campus. Instruction for
 this course has a Math and Science
 focus.*

EDUC-225 0 Units
High School Equivalency/ GED Preparation
 Not Transferrable
 E9107 1/18-5/16 Staff
 Lab: Tue, Thu 06:30p-08:30p;
 Loc: Eureka Downtown Site; Rm:
 502
*This course meets at the Eureka
 Downtown Campus. Instruction for
 this course has a reading/writing/
 social studies focus.*

EDUC-225 0 Units
High School Equivalency/ GED Preparation
 Not Transferrable
 E9109 1/18-5/16 Staff
 Lab: Fri 05:30p-08:00p; Loc:
 Eureka Downtown Site; Rm: 502
*This course meets at the Eureka
 Downtown Campus.*

ENGLISH

ENGL-18 3 Units
American Literature: Civil War to the Present
 Transfers to UC/CSU
 E7807 1/18-5/16 R Odell
 Lec: Tue, Thu 10:05a-11:30a; Loc:
 HM; Rm: HU115
Zero Cost Textbook

ENGL-1S 0.5 - 1 Units
Learning Community for College
 Transfers to CSU
 E8640 1/18-5/16 K Guimaraes
 Lab: Fri 09:00a-10:25a; Loc:
 Eureka Downtown Site; Rm: 302

ENGL-2B 4 Units
Critical Thinking&writing Thru Literatur
 Transfers to UC/CSU
 E7841 1/18-5/16 S Mondor
 Lec: Tue, Thu 12:30p-02:35p; Loc:
 HM; Rm: HU114

ENGL-32 3 Units
Creative Writing: Poetry
 Transfers to UC/CSU
 E7842 1/18-5/16 J Brown
 Lec: Mon, Weds 10:05a-11:30a;
 Loc: SC; Rm: SC208

ENGL-33 3 Units
Creative Writing: Prose
 Transfers to UC/CSU
 E7843 1/18-5/16 L Jean
 Lec: Mon, Weds 01:15p-02:40p;
 Loc: HM; Rm: HU215
Zero Cost Textbook

ENGL-C1000 4 Units
Academic Reading and Writing
 Transfers to UC/CSU
 E8630 1/18-5/16 K Guimaraes
 Lec: Tue, Thu 05:30p-07:35p; Loc:
 Eureka Downtown Site; Rm: 302
*This class is designed for English-
 language learners and includes a
 mandatory support course.*

ENGL-C1000 4 Units
Academic Reading and Writing
 Transfers to UC/CSU
 E7808 1/18-5/16 C Wormhoudt
 Lec: Mon, Weds 05:00p-07:05p;
 Loc: HM; Rm: HU106

ENGL-C1000 4 Units
Academic Reading and Writing
 Transfers to UC/CSU
 E7811 1/18-5/16 R Odell
 Lec: Mon, Weds 10:15a-12:20p;
 Loc: HM; Rm: HU106
Zero Cost Textbook

ENGL-C1000 4 Units
Academic Reading and Writing
 Transfers to UC/CSU
 E7812 1/18-5/16 C Wormhoudt
 Lec: Tue, Thu 02:45p-04:50p; Loc:
 HM; Rm: HU106

ENGL-C1000 4 Units
Academic Reading and Writing
 Transfers to UC/CSU
 E7813 1/18-5/16 J Egan
 Lec: Mon, Weds 12:30p-02:35p;
 Loc: HM; Rm: HU106

ENGL-C1000 4 Units
Academic Reading and Writing
 Transfers to UC/CSU
 E7814 1/18-5/16 J Egan
 Lec: Tue, Thu 08:00a-10:05a; Loc:
 HM; Rm: HU106

ENGL-C1000 4 Units
Academic Reading and Writing
 Transfers to UC/CSU
 E7815 1/18-5/16 K Guimaraes
 Lec: Mon, Weds 02:45p-04:50p;
 Loc: HM; Rm: HU106

ENGL-C1000 4 Units
Academic Reading and Writing
 Transfers to UC/CSU
 E7816 1/18-5/16 L Jean
 Lec: Mon, Weds 08:00a-10:05a;
 Loc: HM; Rm: HU106
Low Cost Textbook

ENGL-C1000 4 Units
Academic Reading and Writing

Transfers to UC/CSU
E8868 1/18-5/16 S Thomas
Lec: Mon, Weds 12:30p-02:35p;
Loc: HM; Rm: HU207

ENGL-C1000 4 Units
Academic Reading and Writing

Transfers to UC/CSU
E8884 10/22-5/16 J Gonzalez
Lec: Tue, Thu 02:25p-03:35p; Loc:
AGC; Rm: TBA
This Dual Enrollment class is only open to Alder Grove Charter students.

ENGL-C1000 4 Units
Academic Reading and Writing

Transfers to UC/CSU
E8936 1/18-5/16 S Thomas
Lec: Tue, Thu 10:15a-12:20p; Loc:
SC; Rm: SC210

ENGL-C1000 4 Units
Academic Reading and Writing

Transfers to UC/CSU
E8940 1/18-5/16 S Thomas
Lec: Tue, Thu 01:15p-03:20p; Loc:
SC; Rm: SC210

ENGL-C1001 3 Units
Critical Thinking and Writing

Transfers to UC/CSU
E7830 1/18-5/16 K Guimaraes
Lec: Mon, Weds 01:15p-02:40p;
Loc: HM; Rm: HU114

ENGL-C1001 3 Units
Critical Thinking and Writing

Transfers to UC/CSU
E7831 1/18-5/16 L Jean
Lec: Tue, Thu 10:05a-11:30a; Loc:
HM; Rm: HU114
Zero Cost Textbook

ENGL-C1001 3 Units
Critical Thinking and Writing

Transfers to UC/CSU
E8941 1/18-5/16 S Thomas
Lec: Mon, Weds 02:50p-04:20p;
Loc: SC; Rm: SC206

ENVIRONMENTAL SCIENCE**ENVSC-10 4 Units**
Introduction to Environmental Science

Transfers to UC/CSU
E8506 1/18-5/16 K Orr
Lab: Weds 06:05p-09:15p; Loc:
SC; Rm: SC108
This class is hybrid with one face-to-face meeting per week and additional portions of the class online.

ENVSC-11 3 Units
Environmental Ethics

Transfers to UC/CSU
E8322 1/18-5/16 A Roberts
Lec: Weds 11:40a-01:05p; Loc:
HM; Rm: HU215;
Low Cost Textbook

ENVSC-12 3 Units
Earth's Changing Climate

Transfers to UC/CSU
E8323 1/18-5/16 L Pedicino
Lec: Tue, Thu 10:05a-11:30a; Loc:
HM; Rm: HU129

ENGLISH AS A SECOND LANGUAGE**ESL-200 0 Units**
Fundamental English as a Second Language (ESL) - Low Beginning

Not Transferrable
E9111 1/18-5/16 Staff
Lab: Mon, Weds, Fri
06:00p-07:20p; Loc: Eureka
Downtown Site; Rm: 301
This course meets on the Downtown campus.

ESL-201 0 Units
Fundamental English as a Second Language (ESL) - High Beginning

Not Transferrable
E9116 1/18-5/16 Staff
Lab: Mon, Weds, Fri
06:00p-07:20p; Loc: Eureka
Downtown Site; Rm: 302
This course meets on the Downtown campus.

ESL-211 0 Units
Intermediate English as a Second Language (ESL) - High

Not Transferrable
E9112 1/18-5/16 Staff
Lab: Tue, Thu 05:30p-07:30p; Loc:
Eureka Downtown Site; Rm: 301
This course meets on the Downtown campus.

ESL-221 0 Units
English for Reading and Writing II Language (ESL) - Low Beginning

Not Transferrable
E8581 1/18-5/16 K Guimaraes
Lab: Tue, Thu 09:30a-11:45a; Loc:
Eureka Downtown Site; Rm: 302
This course meets at the Eureka Downtown Campus.

ESL-231 0 Units
English for Listening, Speaking, and Pro Language (ESL) - Low Beginning

Not Transferrable
E9110 1/18-5/16 Staff
Lab: Tue, Thu 09:00a-11:00a; Loc:
Eureka Downtown Site; Rm: 301
This course meets at the Eureka Downtown Campus.

FORESTRY & NATURAL RESOURCES**FNR-1 3 Units**
Introduction to Forestry and Natural Resources

Transfers to UC/CSU
E8536 1/18-5/16 V Elder
Lec: Mon, Weds 10:05a-11:10a;
Loc: AT; Rm: 127; Lab: Weds
01:15p-04:25p; Loc: AT; Rm: 127

FNR-17 1 Units
Conclave: Intercollegiate Forestry Act

Transfers to CSU
E8472 1/18-5/16 Staff
Lab: Sat 10:00a-01:10p; Loc: AT;
Rm: 127

FNR-31 3 Units
Geospatial Concepts

Transfers to CSU
E8781 1/18-5/16 M Lopez
Lec/Lab: Fri 10:05a-01:10p; Loc:
AT; Rm: 107
Hybrid

FNR-33 3 Units
Introduction to Remote Sensing Remote Sensing

Transfers to CSU
E8922 1/18-5/16 M Lopez
Lec/Lab: Weds 06:05p-08:35p;
Loc: AT; Rm: 107
This is a hybrid course

FNR-46 1 Units
Technology and Applications in Natural Resources

Transfers to CSU
E7706 2/12-5/16 M Lopez
Lab: Thu 05:00p-09:05p; Loc: AT;
Rm: 107
This late start class begins 2/12/25.

FNR-5 3 Units
Forest Ecology and Management

Transfers to CSU
E7712 1/18-5/16 V Elder
Lab: Mon 01:15p-04:25p; Loc:
AT; Rm: 127; Lec: Mon, Weds
11:40a-12:45p; Loc: AT; Rm: 127

FNR-54 4 Units
Introduction to Natural Resource Inventory Techniques

Transfers to UC/CSU
E7701 1/18-5/16 V Elder
Lec: Tue, Thu 10:05a-11:10a;
Loc: AT; Rm: 127; Lab: Tue, Thu
11:30a-02:40p; Loc: AT; Rm: 127

FNR-60 3 Units
Forest Health and Protection

Transfers to CSU
E7713 1/18-5/16 M Lopez
Lab: DHR 12:00a-12:00a; Loc:
; Rm: ; Lec/Lab: Tue, Thu
03:00p-04:25p; Loc: AT; Rm: 127
This course requires 18 hours of weekend field trips.

FNR-80 3 Units
Introduction to Watershed Management

Transfers to CSU
E7716 1/18-5/16 E McGee-Houghton
Lec/Lab: Fri 10:05a-03:25p; Loc:
AT; Rm: 127

FRENCH**FRNC-1A 4 Units**
Elementary French I

Transfers to UC/CSU
E7793 1/18-5/16 R Case
Lec: Mon, Weds 10:15a-12:20p;
Loc: CAC; Rm: 208

FRNC-1B 4 Units
Elementary French II

Transfers to UC/CSU
E7794 1/18-5/16 R Case
Lec: Tue, Thu 02:50p-04:55p; Loc:
HM; Rm: HU125

FIRE TECHNOLOGY**FT-121 9 Units**

Calfire Firefighter Basic Academy 80 hr
Not Transferrable
E7719 1/18-5/16 S Robertson
Lec/Lab: Mon, Tue, Weds, Thu
08:00a-05:00p;

GEOGRAPHY**GEOG-2 3 Units**
Cultural Geography

Transfers to UC/CSU
E7845 1/18-5/16 A Hoffmann
Lec: Mon, Weds 10:05a-11:30a;
Loc: SC; Rm: SC204

GENERAL STUDIES**GS-1 3 Units**
College Success

Transfers to CSU
E8399 1/18-5/16 D Fraser
Lec: Tue, Thu 08:30a-09:55a; Loc:
LRC; Rm: 105

GS-1 3 Units
College Success

Transfers to CSU
E8400 2/3-5/16 D Fraser
Lec: Mon, Weds 08:30a-10:10a;
Loc: LRC; Rm: 105
This late start class starts 2/3/25.

GUIDANCE**GUID-143 0.5 Units**
Individualized Assessment and Academic Planning

Not Transferrable
E8532 1/18-5/16 K Eilers

GUID-145 1 - 4 Units
Applied Study Skills and Strategies

Not Transferrable
E8513 1/18-5/16 A Nichols

GUID-145 1 - 4 Units
Applied Study Skills and Strategies

Not Transferrable
E8520 1/18-5/16 A Nichols

GUID-146 1 - 4 Units
Applied Study Skills & Strategies for English

Not Transferrable
E8523 1/18-5/16 A Nichols

**GUID-147 1 - 4 Units
Applied Study Skills and
Strategies For Math**

Not Transferrable
E8526 1/18-5/16 A Nichols

**GUID-148 1 - 4 Units
Applied Study Skills and
Strategies for Science**

Not Transferrable
E8529 1/18-5/16 A Nichols

**GUID-205 0 Units
Supervised Tutoring**

Not Transferrable
E8225 1/18-5/16 Staff

**GUID-205 0 Units
Supervised Tutoring**

Not Transferrable
E8226 1/18-5/16 Staff

**GUID-205 0 Units
Supervised Tutoring**

Not Transferrable
E8227 1/18-5/16 Staff

**GUID-205 0 Units
Supervised Tutoring**

Not Transferrable
E8228 1/18-5/16 Staff

**GUID-205 0 Units
Supervised Tutoring**

Not Transferrable
E8229 1/18-5/16 Staff

**GUID-205 0 Units
Supervised Tutoring**

Not Transferrable
E8230 1/18-5/16 Staff

**GUID-205 0 Units
Supervised Tutoring**

Not Transferrable
E8231 1/18-5/16 Staff

**GUID-209 0 Units
Social Opportunities for
Students with Disabilities**

Not Transferrable
E8993 1/18-5/16 A Tomkinson
Lab: Thu 12:00p-03:00p; Loc:
Eureka Downtown Site; Rm: 301
*This course meets at the Eureka
Downtown Campus.*

**GUID-245 0 Units
Feel Good and Stay Healthy**

Not Transferrable
E8988 1/18-2/10 A Tomkinson
Lab: Mon, Weds 10:15a-11:30a;
Loc: AT; Rm: 105
*This course meets at the Eureka Main
Campus.*

**GUID-245 0 Units
Feel Good and Stay Healthy**

Not Transferrable
E8989 2/12-3/5 A Tomkinson
Lab: Mon, Weds 10:15a-11:30a;
Loc: AT; Rm: 105
*This course meets at the Eureka Main
Campus.*

**GUID-245 0 Units
Feel Good and Stay Healthy**

Not Transferrable
E8990 3/10-4/7 A Tomkinson
Lab: Mon, Weds 10:15a-11:30a;
Loc: AT; Rm: 105
*This course meets at the Eureka Main
Campus.*

**GUID-245 0 Units
Feel Good and Stay Healthy**

Not Transferrable
E8991 4/9-4/28 A Tomkinson
Lab: Mon, Weds 10:15a-11:30a;
Loc: AT; Rm: 105
*This course meets at the Eureka Main
Campus.*

**GUID-245 0 Units
Feel Good and Stay Healthy**

Not Transferrable
E8992 4/30-5/16 A Tomkinson
Lab: Mon, Weds 10:15a-11:30a;
Loc: AT; Rm: 105
*This course meets at the Eureka Main
Campus.*

**GUID-246 0 Units
Applied Study Skills
and Strategies**

Not Transferrable
E8514 1/18-5/16 A Nichols
Lab: DHR 12:00a-12:00a;

**GUID-252 0 Units
Communication
Through Adapted Art**

Not Transferrable
E8985 1/18-3/5A Tomkinson
Lab: Mon, Weds 12:00p-03:00p;
*This course meets at the Eureka Main
Campus.*

**GUID-252 0 Units
Communication
Through Adapted Art**

Not Transferrable
E8986 3/10-4/28 A Tomkinson
Lab: Mon, Weds 12:00p-03:00p;
*This course meets at the Eureka Main
Campus.*

**GUID-252 0 Units
Communication
Through Adapted Art**

Not Transferrable
E8987 4/30-5/16 A Tomkinson
Lab: Mon, Weds 12:00p-03:00p;
*This course meets at the Eureka Main
Campus.*

HEALTH EDUCATION**HE-1 3 Units
Health Education**

Transfers to UC/CSU
E9062 1/18-5/16 P Cortes-Garcia
Lec: Mon, Weds 10:05a-11:40a;
Loc: PE; Rm: 100K

**HE-7 3 Units
Emergency Response:
First Aid/CPR/AED**

Transfers to UC/CSU
E8190 1/18-5/16 P Cortes-Garcia
Lec: Tue, Thu 10:05a-11:30a; Loc:
PE; Rm: 100K

HISTORY**HIST-20 3 Units
World History:
Prehistory to 1500 CE**

Transfers to UC/CSU
E7855 1/18-5/16 P Geck
Lec: Tue, Thu 10:05a-11:30a; Loc:
HM; Rm: HU215

**HIST-5 3 Units
Western Civilization ca.
1600 to the Present**

Transfers to UC/CSU
E7859 1/18-5/16 A Queen
Lec: Tue 11:40a-01:05p; Loc: HM;
Rm: HU217

**HIST-8 3 Units
US History Through
Reconstruction**

Transfers to UC/CSU
E7860 1/18-5/16 N Garcia
Lec: Tue, Thu 11:40a-01:05p; Loc:
HM; Rm: HU215

**HIST-8 3 Units
US History Through
Reconstruction**

Transfers to UC/CSU
E7861 1/18-5/16 P Geck
Lec: Tue, Thu 01:15p-02:40p; Loc:
HM; Rm: HU215

**HIST-9 3 Units
US History Reconstruction
to the Present**

Transfers to UC/CSU
E7865 1/18-5/16 S Salinas
Lec: Mon, Weds 10:05a-11:30a;
Loc: HM; Rm: HU215

**HIST-9 3 Units
US History Reconstruction
to the Present**

Transfers to UC/CSU
E7866 1/18-5/16 S Salinas
Lec: Tue, Thu 02:50p-04:15p; Loc:
HM; Rm: HU215

**HIST-9 3 Units
US History Reconstruction
to the Present**

Transfers to UC/CSU
E7867 1/18-5/16 S Salinas
Lec: Mon, Weds 02:50p-04:15p;
Loc: HM; Rm: HU213

**HEALTH
OCCUPATIONS****HO-15 3 Units
Nutrition**

Transfers to UC/CSU
E8259 1/18-5/16 L King
Lec: Mon 03:50p-07:00p; Loc:
HM; Rm: HU215

**HO-159 6 Units
Emergency Medical
Technician**

Not Transferrable
E8255 1/18-5/16 V Plambeck
Lec/Lab: Mon, Weds
05:30p-09:45p; Loc: AT; Rm: 126

**HO-170B 13 Units
N Coast Paramedic
Program 2**

Not Transferrable
E8263 1/18-5/16 D Boileau
Lab: DHR 12:00a-12:00a; Loc: OC;
Rm: TBA; Lec: Fri 12:45p-09:30p;
Loc: AT; Rm: 103; Lab: Sat
07:00a-05:30p; Loc: AT; Rm: 126

KINESIOLOGY**KINS-63 3 Units
Personal Training Principles**

Transfers to CSU
E8191 1/18-5/16 J White
Lec: Mon, Weds 01:15p-02:40p;
Loc: PE; Rm: 100K

**KINS-64 3 Units
Concepts of Strength
Training**

Transfers to UC/CSU
E8192 1/18-5/16 J White
Lec: Mon, Weds 11:40a-01:05p;
Loc: PE; Rm: 100K

**KINS-65 3 Units
Foundations of Kinesiology**

Transfers to UC/CSU
E8193 1/18-5/16 M Gleave
Lec: Tue, Thu 11:40a-01:05p; Loc:
PE; Rm: 100K

**KINS-66 3 Units
Concepts of Physical
Fitness and Exercise**

Transfers to UC/CSU
E8928 1/18-5/16 M Gleave
Lec: Tue, Thu 10:05a-11:40a; Loc:
LRC; Rm: 105

MEDICAL ASSISTING**MA-201 0 Units
Medical Assistant
Training Program I**

Not Transferrable
E9104 1/18-5/9 D Doble
Lab: Mon, Weds 09:00a-05:00p;
Loc: Eureka Downtown Site; Rm:
501; Distance Education: Mon,
Tue, Weds, Thu 09:00a-09:50a;
*Must apply with separate application.
Contact Adult & Community
Education at 707-476-4500. Lab
days and times TBA. 168 hours of
lecture and 84 hours of lab required
to complete this course. Lecture online
synchronous meetings: M-TH 9:00 -
9:50am.*

MATHEMATICS**MATH-10 3 Units
Contemporary Mathematics
for Technical**

Transfers to CSU
E7941 1/18-5/16 J Haley
Lec: Tue, Thu 03:55p-05:20p; Loc:
SC; Rm: SC210

**MATH-25 4 Units
College Trigonometry**

Transfers to CSU
E7962 1/18-5/16 S Jackson
Lec: Mon, Weds, Fri
02:50p-04:05p; Loc: SC; Rm:
SC204

MATH-30 **4 Units**
College Algebra
 Transfers to UC/CSU
 E7974 1/18-5/16 A Buntin
 Lec: Tue, Thu 10:05a-11:20a; Loc:
 SC; Rm: SC204;
Low Cost Textbook

MATH-31 **5 Units**
College Algebra With Support
 Transfers to CSU
 E7975 1/18-5/16 J Haley
 Lec/Lab: Tue, Thu 11:40a-02:00p;
 Loc: SC; Rm: SC208

MATH-5 **3 Units**
Contemporary Mathematics
 Transfers to CSU
 E7983 1/18-5/16 B Morin
 Lec: Tue, Thu 11:40a-01:05p; Loc:
 SC; Rm: SC206

MATH-50A **4 Units**
Calculus I: Single Variable Calculus
 Transfers to UC/CSU
 E7978 1/18-5/16 S Jackson
 Lec: Mon, Weds 11:40a-01:05p;
 Loc: SC; Rm: SC206
Hybrid

MATH-50C **4 Units**
Multivariable Calculus
 Transfers to UC/CSU
 E7981 1/18-5/16 J Pace
 Lec: Mon, Weds 11:40a-12:55p;
 Loc: SC; Rm: SC208
Zero Cost Textbook

MATH-55 **4 Units**
Differential Equations
 Transfers to UC/CSU
 E7982 1/18-5/16 S Jackson
 Lec: Mon, Weds 09:20a-11:25a;
 Loc: SC; Rm: SC206

MUSIC

MUS-1 **3 Units**
Introduction to Music
 Transfers to UC/CSU
 E8669 1/18-5/16 A Backstrom
 Lec: Tue, Thu 10:05a-11:30a; Loc:
 CAC; Rm: 200

MUS-10 **3 Units**
Music in History
 Transfers to UC/CSU
 E8668 1/18-5/16 A Backstrom
 Lec: Tue, Thu 08:30a-09:55a; Loc:
 CAC; Rm: 200

MUS-22B **1 Units**
Beginning Band Instruments: Brass
 Transfers to UC/CSU
 E8010 1/18-5/16 B Newkirk
 Lab: Tue, Thu 01:15p-03:50p; Loc:
 CAC; Rm: 202

MUS-22P **1 Units**
Beginning Band Instruments: Percussion
 Transfers to UC/CSU
 E8011 1/18-5/16 B Newkirk
 Lab: Tue, Thu 01:15p-02:40p; Loc:
 CAC; Rm: 202

MUS-22W **1 Units**
Beginning Band Instruments: Woodwinds
 Transfers to UC/CSU
 E8012 1/18-5/16 B Newkirk
 Lab: Tue, Thu 01:15p-02:40p; Loc:
 CAC; Rm: 202

MUS-26A **1 Units**
Beginning Class Voice I
 Transfers to UC/CSU
 E8642 1/18-5/16 A Backstrom
 Lec/Lab: Mon, Weds
 01:15p-02:20p; Loc: CAC; Rm: 300

MUS-26B **1 Units**
Beginning Class Voice II
 Transfers to UC/CSU
 E8670 1/18-5/16 A Backstrom
 Lab: Mon, Weds 01:15p-02:40p;
 Loc: CAC; Rm: 300

MUS-27A **1 Units**
Intermediate Class Voice I
 Transfers to UC/CSU
 E8671 1/18-5/16 A Backstrom
 Lab: Mon, Weds 01:15p-02:40p;
 Loc: CAC; Rm: 300

MUS-27B **1 Units**
Intermediate Class Voice II
 Transfers to UC/CSU
 E8672 1/18-5/16 A Backstrom
 Lab: Mon, Weds 01:15p-02:40p;
 Loc: CAC; Rm: 300

MUS-29A **1 Units**
Beginning Class Guitar I
 Transfers to UC/CSU
 E8025 1/18-5/16 B Newkirk
 Lec/Lab: Tue, Thu 12:00p-01:05p;
 Loc: CAC; Rm: 200

MUS-29B **1 Units**
Beginning Class Guitar II
 Transfers to UC/CSU
 E8026 1/18-5/16 B Newkirk
 Lab: Tue, Thu 11:40a-01:05p; Loc:
 CAC; Rm: 200

MUS-29C **1 Units**
Intermediate Class Guitar
 Transfers to UC/CSU
 E8027 1/18-5/16 B Newkirk
 Lab: Tue, Thu 11:40a-01:05p; Loc:
 CAC; Rm: 200

MUS-61 **1 Units**
Concert Band
 Transfers to UC/CSU
 E8029 1/18-5/16 B Newkirk
 Lab: Weds 07:00p-10:10p; Loc:
 CAC; Rm: 200

MUS-62 **1 Units**
Jazz Orchestra
 Transfers to UC/CSU
 E8030 1/18-5/16 B Newkirk
 Lab: Tue 06:30p-09:40p; Loc:
 CAC; Rm: 200

NATIVE AMERICAN STUDIES

NAS-1 **3 Units**
Introduction to Native American Studies
 Transfers to UC/CSU
 E7885 1/18-5/16 C Agee
 Lec: Mon, Weds 08:30a-09:55a;
 Loc: HM; Rm: HU112

NAS-1 **3 Units**
Introduction to Native American Studies
 Transfers to UC/CSU
 E7886 1/18-5/16 N Garcia
 Lec: Mon, Weds 10:05a-11:30a;
 Loc: HM; Rm: HU112

NAS-1 **3 Units**
Introduction to Native American Studies
 Transfers to UC/CSU
 E7887 1/18-5/16 N Garcia
 Lec: Mon, Weds 11:40a-01:05p;
 Loc: HM; Rm: HU112

NAS-1 **3 Units**
Introduction to Native American Studies
 Transfers to UC/CSU
 E7889 1/18-5/16 M Atkins
 Lec: Tue, Thu 10:05a-11:30a; Loc:
 HM; Rm: HU110

NAS-1 **3 Units**
Introduction to Native American Studies
 Transfers to UC/CSU
 E7890 1/18-5/16 M Atkins
 Lec: Tue, Thu 11:40a-01:05p; Loc:
 HM; Rm: HU129

NAS-1 **3 Units**
Introduction to Native American Studies
 Transfers to UC/CSU
 E7891 1/18-5/16 C Agee
 Lec: Tue, Thu 01:15p-02:40p; Loc:
 HM; Rm: HU129

NAS-21 **3 Units**
Native American History
 Transfers to UC/CSU
 E7899 1/18-5/16 C Agee
 Lec: Tue, Thu 10:05a-11:30a; Loc:
 HM; Rm: HU127

NURSING

NURS-2 **9.5 Units**
Nursing Science and Practice Concepts II
 Transfers to CSU
 E8265 1/18-5/16 Staff
 Lab: DHR 12:00a-12:00a; Loc ;
 Rm ; Lec: DHR 12:00a-12:00a;

NURS-2 **9.5 Units**
Nursing Science and Practice Concepts II
 Transfers to CSU
 E8266 1/18-5/16 Staff
 Lab: DHR 12:00a-12:00a; Loc ;
 Rm ; Lec: DHR 12:00a-12:00a;

NURS-2 **9.5 Units**
Nursing Science and Practice Concepts II
 Transfers to CSU
 E8267 1/18-5/16 Staff
 Lab: DHR 12:00a-12:00a; Loc ;
 Rm ; Lec: DHR 12:00a-12:00a;

NURS-20 **3 Units**
RN Transitional Concepts
 Transfers to CSU
 E8264 1/18-5/16 Staff
 Lab: DHR 12:00a-12:00a;

NURS-4 **10 Units**
Nursing Science and Practice Concepts IV
 Transfers to CSU
 E8268 1/18-5/16 Staff
 Lab: DHR 12:00a-12:00a; Loc ;
 Rm ; Lec: DHR 12:00a-12:00a;

NURS-4 **10 Units**
Nursing Science and Practice Concepts IV
 Transfers to CSU
 E8269 1/18-5/16 Staff
 Lab: DHR 12:00a-12:00a; Loc ;
 Rm ; Lec: DHR 12:00a-12:00a;

NURS-4 **10 Units**
Nursing Science and Practice Concepts IV
 Transfers to CSU
 E8270 1/18-5/16 Staff
 Lab: DHR 12:00a-12:00a; Loc ;
 Rm ; Lec: DHR 12:00a-12:00a;

PHYSICAL EDUCATION

PE-10 **1 Units**
Running and Walking
 Transfers to UC/CSU
 E8196 1/18-5/16 Staff
 Lab: Mon, Weds 08:30a-09:55a;
 Loc: PE; Rm: FB

PE-12 **1 Units**
Weight Training
 Transfers to CSU
 E8199 1/18-5/16 J White
 Lab: Tue, Thu 11:40a-01:05p; Loc:
 FH; Rm: 106

PE-12 **1 Units**
Weight Training
 Transfers to CSU
 E8200 1/18-5/16 D Wheeler
 Lab: Mon, Weds 10:05a-11:40a;
 Loc: FH; Rm: 106

PE-13 **1 Units**
Boot Camp Fitness
 Transfers to UC/CSU
 E8201 1/18-5/16 Staff
 Lab: Mon, Weds 04:15p-05:40p;
 Loc: FH; Rm: 106

PE-14 **1 Units**
Defensive Tactics
 Transfers to UC/CSU
 E8202 1/18-5/16 Staff
 Lab: Mon, Weds 04:15p-05:40p;
 Loc: PE; Rm: 116D

**PE-15 1 Units
Empowerment Self Defense**

Transfers to UC/CSU
E8923 2/23-3/9 C Slack
Lec/Lab: Sun 09:00a-05:00p;
Loc: PE; Rm: 100K; Lec/Lab: Sun
09:00a-04:00p; Loc: PE; Rm:
100K

*This late start class runs three
consecutive Sundays. Sunday,
February 23rd 9:00 am-5:00pm
Sunday, March 2nd 9:00 am-5:00pm
Sunday, March 9th 9:00 am-4:00pm*

**PE-17 1 Units
Aerobic Kickboxing**

Transfers to CSU
E8203 1/18-5/16 Staff
Lab: Tue, Thu 10:00a-11:30a; Loc:
PE; Rm: 116D

**PE-18 1 Units
Pilates Mat**

Transfers to UC/CSU
E8204 1/18-5/16 B Northern
Lab: Tue, Thu 11:40a-01:05p; Loc:
PE; Rm: 116D

**PE-19 1 Units
Yoga**

Transfers to UC/CSU
E8205 1/18-5/16 T Graham
Lab: Tue, Thu 01:05p-02:40p; Loc:
PE; Rm: 116D

**PE-22 0.5 - 1 Units
Soccer**

Transfers to UC/CSU
E8206 1/18-5/16 P Cortes-Garcia
Lab: Tue, Thu 11:40a-01:05p; Loc:
PE; Rm: 116D

**PE-24 0.5 - 2 Units
Touch Football**

Transfers to UC/CSU
E8869 1/18-5/16 J White
108 hours required

**PE-24 0.5 - 2 Units
Touch Football**

Transfers to UC/CSU
E8870 1/18-5/16 D Wheeler
108 hours required

**PE-302 0.5 - 1 Units
Adaptive Conditioning**

Not Transferrable
E8067 1/18-5/16 D Ratto
Lab: Tue, Thu 08:30a-09:55a; Loc:
FH; Rm: 106
Class is held in the PE Weight Room.

**PE-302 0.5 - 1 Units
Adaptive Conditioning**

Not Transferrable
E8070 1/18-5/16 D Ratto
Lab: Tue, Thu 11:40a-01:05p; Loc:
FH; Rm: 106
Class is held in the PE Weight Room.

**PE-302 0.5 - 1 Units
Adaptive Conditioning**

Not Transferrable
E8073 1/18-5/16 D Ratto
Lab: Mon, Weds 10:05a-11:30a;
Loc: FH; Rm: 106
Class is held in the PE Weight Room.

**PE-302 0.5 - 1 Units
Adaptive Conditioning**

Not Transferrable
E8076 1/18-5/16 D Ratto
Lab: Mon, Weds 11:40a-01:05p;
Loc: FH; Rm: 106
Class is held in the PE Weight Room.

**PE-51 1.5 Units
Intercollegiate
Basketball - Women**

Transfers to UC/CSU
E8211 1/18-5/16 B Northern

**PE-52 1.5 Units
Intercollegiate
Basketball - Men**

Transfers to UC/CSU
E8212 1/18-5/16 R Bisio

**PE-57 3 Units
Intercollegiate
Track and Field**

Transfers to UC/CSU
E8214 1/18-5/16 P Elmore

**PE-63 3 Units
Intercollegiate Wrestling**

Transfers to CSU
E8216 1/18-5/16 B Benvenuti

**PE-80 0.5 - 2 Units
Athletic Conditioning**

Transfers to UC/CSU
E8217 3/3-5/16 P Cortes-Garcia

**PE-80 0.5 - 2 Units
Athletic Conditioning**

Transfers to UC/CSU
E8218 1/18-5/16 Staff

**PE-80 0.5 - 2 Units
Athletic Conditioning**

Transfers to UC/CSU
E8219 1/18-5/16 Staff

**PE-80 0.5 - 2 Units
Athletic Conditioning**

Transfers to UC/CSU
E8220 3/24-5/16 B Northern

**PE-80 0.5 - 2 Units
Athletic Conditioning**

Transfers to UC/CSU
E8221 3/24-5/16 J Claus

**PE-9 1 Units
Hiking**

Transfers to UC/CSU
E8224 2/7-5/16 Staff
Lab: Fri 01:05p-06:10p; Loc: PE;
Rm: 100K
This class starts at 2/7/25.

**PE-90 0.5 - 1 Units
Adaptive Resistive Training**

Transfers to UC/CSU
E8068 1/18-5/16 D Ratto
Lab: Tue, Thu 08:30a-09:55a; Loc:
FH; Rm: 106
Class is held in the PE Weight Room.

**PE-90 0.5 - 1 Units
Adaptive Resistive Training**

Transfers to UC/CSU
E8071 1/18-5/16 D Ratto
Lab: Tue, Thu 11:40a-01:05p; Loc:
FH; Rm: 106
Class is held in the PE Weight Room.

**PE-90 0.5 - 1 Units
Adaptive Resistive Training**

Transfers to UC/CSU
E8074 1/18-5/16 D Ratto
Lab: Mon, Weds 10:05a-11:30a;
Loc: FH; Rm: 106
Class is held in the PE Weight Room.

**PE-90 0.5 - 1 Units
Adaptive Resistive Training**

Transfers to UC/CSU
E8077 1/18-5/16 D Ratto
Lab: Mon, Weds 11:40a-01:05p;
Loc: FH; Rm: 106
Class is held in the PE Weight Room.

**PE-98 1 Units
Adaptive Physical Education**

Transfers to UC/CSU
E8069 1/18-5/16 D Ratto
Lab: Tue, Thu 08:30a-09:55a; Loc:
FH; Rm: 106
Class is held in the PE Weight Room.

**PE-98 1 Units
Adaptive Physical Education**

Transfers to UC/CSU
E8072 1/18-5/16 D Ratto
Lab: Tue, Thu 11:40a-01:05p; Loc:
FH; Rm: 106
Class is held in the PE Weight Room.

**PE-98 1 Units
Adaptive Physical Education**

Transfers to UC/CSU
E8075 1/18-5/16 D Ratto
Lab: Mon, Weds 10:05a-01:05p;
Loc: FH; Rm: 106
Class is held in the PE Weight Room.

**PE-98 1 Units
Adaptive Physical Education**

Transfers to UC/CSU
E8078 1/18-5/16 D Ratto
Lab: Mon, Weds 11:40a-01:05p;
Loc: FH; Rm: 106
Class is held in the PE Weight Room.

PHILOSOPHY**PHIL-1 3 Units
Critical Thinking**

Transfers to UC/CSU
E7917 1/18-5/16 A Roberts
Lec: Mon, Weds 01:15p-02:40p;
Loc: HM; Rm: HU217
Low Cost Textbook

**PHIL-10 3 Units
Introduction to Philosophy**

Transfers to UC/CSU
E7908 1/18-5/16 T Bos
Lec: Mon, Weds 10:05a-11:30a;
Loc: HM; Rm: HU217

**PHIL-10 3 Units
Introduction to Philosophy**

Transfers to UC/CSU
E7909 1/18-5/16 T Bos
Lec: Tue, Thu 02:50p-04:15p; Loc:
HM; Rm: HU213

**PHIL-12 3 Units
Introduction to Logic**

Transfers to UC/CSU
E7912 1/18-5/16 J Johnston
Lec: Tue, Thu 10:05a-11:30a; Loc:
HM; Rm: HU217

**PHIL-15 3 Units
Religions of the World**

Transfers to UC/CSU
E7914 1/18-5/16 A Roberts
Lec: Tue, Thu 01:15p-02:40p; Loc:
HM; Rm: HU217
Low Cost Textbook

**PHIL-2 3 Units
Introduction to
Political Philosophy**

Transfers to UC/CSU
E7920 1/18-5/16 R Emenaker
Lec: Mon, Weds 11:40a-01:05p;
Loc: SC; Rm: SC204

PHYSICS**PHYS-2B 4 Units
General Physics II**

Transfers to UC/CSU
E7294 1/18-5/16 E Kramer
Lab: Thu 10:05a-01:15p; Loc: HM;
Rm: HU211;
*This class requires both in person and
online components. All meeting times
and days are listed. You need access to
a device with an internet connection.
We will utilize Canvas as our learning
platform. This class section may be
merged with other section.*

**PHYS-4A 4 Units
Calculus-Based
Physics: Mechanics**

Transfers to UC/CSU
E7296 1/18-5/16 E Kramer
Lab: Weds 01:55p-05:05p; Loc:
HM; Rm: HU211
*This class requires both in person and
online components. All meeting times
and days are listed. You need access to
a device with an internet connection.
We will utilize Canvas as our learning
platform. This class section may be
merged with other section.*

**PHYS-4C 4 Units
Calculus-based Physics:
Heat, Optics, Waves
and Modern Physics**

Transfers to UC/CSU
E7298 1/18-5/16 E Kramer
Lab: Tue 10:05a-01:15p; Loc: HM;
Rm: HU211
*This class requires both in person and
online components. All meeting times
and days are listed. You need access to
a device with an internet connection.
We will utilize Canvas as our learning
platform. This class section may be
merged with other section.*

POLITICAL SCIENCE**POLS-C1000 3 Units
American Government
and Politics**

Transfers to UC/CSU
E7922 1/18-5/16 R Emenaker
Lec: Mon, Weds 01:15p-02:40p;
Loc: SC; Rm: SC204

**POLS-C1000 3 Units
American Government
and Politics**

Transfers to UC/CSU
E7923 1/18-5/16 R Emenaker
Lec: Tue, Thu 01:15p-02:40p; Loc:
SC; Rm: SC204

POLSC-2 3 Units
Introduction to Political Philosophy
 Transfers to UC/CSU
 E7929 1/18-5/16 R Emenaker
 Lec: Mon, Weds 11:40a-01:05p;
 Loc: SC; Rm: SC204

PSYCHOLOGY

PSYC-C1000 3 Units
Introduction to Psychology
 Transfers to UC/CSU
 E7989 1/18-5/16 J Kandus
 Lec: Tue, Thu 10:05a-11:30a;
 HM; Rm: HU112

PSYC-C1000 3 Units
Introduction to Psychology
 Transfers to UC/CSU
 E7990 1/18-5/16 J Kandus
 Lec: Tue, Thu 11:40a-01:05p;
 HM; Rm: HU112

PSYC-C1000 3 Units
Introduction to Psychology
 Transfers to UC/CSU
 E7991 1/18-5/16 S Quiggle
 Lec: Mon, Weds 01:15p-02:40p;
 Loc: HM; Rm: HU110

PSYC-C1000 3 Units
Introduction to Psychology
 Transfers to UC/CSU
 E7992 1/18-5/16 J Frederick
 Lec: Tue, Thu 06:05p-07:30p;
 HM; Rm: HU110

PSYCH-11 3 Units
Lifespan Development
 Transfers to UC/CSU
 E7986 1/18-5/16 J Frederick
 Lec: Tue, Thu 11:40a-01:05p;
 SC; Rm: SC204

PSYCH-2 3 Units
Research Methods in Psychology
 Transfers to UC/CSU
 E7999 1/18-5/16 M Haggerty
 Lec: Weds 01:15p-02:40p; Loc:
 CAC; Rm: 206

This class requires both in person and online components. All meeting times and days are listed. You need access to a device with an internet connection. No additional technology-related purchases will be required. We will utilize Canvas

PSYCH-20 3 Units
Biological Psychology
 Transfers to UC/CSU
 E8459 1/18-5/16 J Kandus
 Lec: Tue, Thu 01:15p-02:40p;
 SC; Rm: SC206

PSYCH-3 3 Units
Psychology of Sexuality
 Transfers to UC/CSU
 E8002 1/18-5/16 M Haggerty
 Lec: Mon, Weds 10:05a-11:30a;
 Loc: CAC; Rm: 208

PSYCH-33 3 Units
Personal Growth and Adjustment
 Transfers to CSU
 E8005 1/18-5/16 S Quiggle
 Lec: Mon, Weds 11:40a-01:05p;
 Loc: HM; Rm: HU110

SIGN LANGUAGE

SNLAN-1A 4 Units
Elementary American Sign Language I
 Transfers to UC/CSU
 E7786 1/18-5/16 K Wolcott
 Lec: Mon, Weds 12:30p-02:35p;
 Loc: HM; Rm: HU125

SNLAN-1B 4 Units
Elementary American Sign Language II
 Transfers to UC/CSU
 E8996 1/18-5/16 K Wolcott
 Lec: Tue, Thu 10:05a-12:10p;
 CAC; Rm: 208

SOCIOLOGY

SOC-1 3 Units
Introduction to Sociology
 Transfers to UC/CSU
 E7931 1/18-5/16 D Maher
 Lec: Tue 11:40a-01:05p; Loc: HM;
 Rm: HU213
Hybrid

SOC-1 3 Units
Introduction to Sociology
 Transfers to UC/CSU
 E7932 1/18-5/16 D Maher
 Lec: Mon 10:05a-11:30a; Loc: HM;
 Rm: HU115
hybrid

SOC-17 3 Units
Introduction to Queer Studies
 Transfers to CSU
 E7938 1/18-5/16 D Maher
 Lec: Tue 05:30p-06:55p; Loc: SC;
 Rm: SC206
Zero Cost Textbook

SENIOR RESOURCE

SR-222 0 Units
Senior Instrumental Ensemble
 Not Transferrable
 E8031 1/18-5/16 B Newkirk
 Lab: Tue, Thu 01:15p-02:40p;
 CAC; Rm: 200

SR-222 0 Units
Senior Instrumental Ensemble
 Not Transferrable
 E8032 1/18-5/16 B Newkirk
 Lab: Weds 07:00p-10:10p; Loc:
 CAC; Rm: 200

SR-222 0 Units
Senior Instrumental Ensemble
 Not Transferrable
 E8033 1/18-5/16 B Newkirk
 Lab: Tue 06:30p-09:10p; Loc:
 CAC; Rm: 200

STATISTICS

STAT-C1000 4 Units
Introduction to Statistics
 Transfers to UC/CSU
 E7942 1/18-5/16 W Nickle
 Lec: Mon, Weds 09:00a-11:05a;
 Loc: HM; Rm: HU114

STAT-C1000 4 Units
Introduction to Statistics
 Transfers to UC/CSU
 E7945 1/18-5/16 H Heese
 Lec: Tue, Thu 06:05p-08:10p;
 SC; Rm: SC214

STAT-C1000 4 Units
Introduction to Statistics
 Transfers to UC/CSU
 E7947 1/18-5/16 B Morin
 Lec: Mon, Weds 10:05a-12:10p;
 Loc: SC; Rm: SC202

STAT-C1000 4 Units
Introduction to Statistics
 Transfers to UC/CSU
 E7948 1/18-5/16 T Keiber
 Lec: Tue, Thu 10:05a-12:10p;
 SC; Rm: SC214

STAT-C1000E 5 Units
Introduction to Statistics With Support
 Transfers to UC/CSU
 E7943 1/18-5/16 J Pace
 Lec/Lab: Tue, Thu 10:40a-02:10p;
 Loc: SC; Rm: SC202

STAT-C1000E 5 Units
Introduction to Statistics With Support
 Transfers to UC/CSU
 E7946 1/18-5/16 A Savage
 Lec/Lab: Mon, Weds
 10:05a-01:40p; Loc: SC; Rm:
 SC214

SOCIAL WORK AND HUMAN SERVICES

SWHS-1 3 Units
Introduction to Social Work and Human SE
Introduction to Social Work and Human Services
 Transfers to CSU
 E7720 1/18-5/16 C Perkins
 Lec: Tue, Thu 11:40a-01:05p;

SWHS-2 3 Units
Field Seminar in Social Work and Human Services
 Transfers to CSU
 E7722 1/18-5/16 C Perkins
 Lec: Tue, Thu 01:15p-02:40p;
Students in this section also enroll in SWHS-42-V8463

WELDING TECHNOLOGY

WT-53 2 Units
Basic Gas and Arc Welding
 Transfers to CSU
 E7724 1/18-5/16 K Shamp
 Lec/Lab: Weds 08:30a-12:50p;
 Loc: AT; Rm: 142

WT-53 2 Units
Basic Gas and Arc Welding
 Transfers to CSU
 E7725 1/18-5/16 K Shamp
 Lec/Lab: Tue 08:30a-12:50p; Loc:
 AT; Rm: 142

WT-53 2 Units
Basic Gas and Arc Welding
 Transfers to CSU
 E9185 1/18-5/16 Staff
 Lec: Tue 08:30a-09:35a; Loc: AT;
 Rm: 106; Lab: Tue 09:45a-12:55p;
 Loc: AT; Rm: 142

WT-54 2 Units
General Gas, Braze (emphasis) Welding, and Soldering
 Transfers to CSU
 E7726 1/18-5/16 K Shamp
 Lec/Lab: Mon 08:30a-12:50p;
 Loc: AT; Rm: 142

WT-61 4 Units
Welding and Gouging, Gas and Arc (emphasis E7018, Braze)
 Transfers to CSU
 E7727 1/18-5/16 K Shamp
 Lec: Mon, Weds 04:30p-05:35p;
 Loc: AT; Rm: 106; Lab: Mon,
 Weds 05:40p-08:50p; Loc: AT;
 Rm: 142

WT-63 4 Units
Weld Inspection, Testing, Resistance and pattern cutting
 Transfers to CSU
 E7728 1/18-5/16 I Huddon-Cossar
 Lec: Tue, Thu 05:00p-06:05p;
 Loc: AT; Rm: 106; Lab: Tue, Thu
 06:15p-09:25p; Loc: AT; Rm: 142

WT-67 2 Units
Special Welding Laboratory (emphasis AWS certification)
 Transfers to CSU
 E7729 1/18-5/16 J Goodrow
 Lab: Fri 09:00a-03:30p; Loc: AT;
 Rm: 142

WT-81 0.5 - 2 Units
Open Lab for Welding Fabrication
 Not Transferrable
 E7730 1/18-5/16 J Goodrow
 Lab: Thu 09:00a-03:30p; Loc: AT;
 Rm: 142



Del Norte Campus Face-To-Face Classes

ART

ART-10 Color and Design **3 Units**
Transfers to UC/CSU
D8037 1/18-5/16 G Christensen
Lec/Lab: Tue, Thu from
05:30p-08:40p; Loc: DA; Rm: 12

ART-17 Basic Drawing **3 Units**
Transfers to UC/CSU
D8038 1/18-5/16 G Christensen
Lec/Lab: Tue, Thu from
01:00p-04:10p; Loc: DA; Rm: 12

BIOLOGY

BIOL-2 Microbiology **4 Units**
Transfers to UC/CSU
D8039 1/18-5/16 N Decker
Lec: Tue, Thu from 08:30a-09:35a;
Loc: DN; Rm: SCI-LAB; Lab: Tue,
Thu from 10:05a-01:15p; Loc: DN;
Rm: SCI-LAB

BIOL-6 Human Anatomy **4 Units**
Transfers to UC/CSU
D8040 1/18-5/16 J Jackson
Lec: Mon, Weds from
08:30a-09:35a; Loc: DN; Rm:
SCI-LAB; Lab: Mon, Weds from
10:05a-01:15p; Loc: DN; Rm: SCI-
LAB

BUSINESS

BUS-18 Business Law **3 Units**
Transfers to UC/CSU
D8041 1/18-5/16 E Naffah
Lec: Thu from 05:40p-08:50p;
Loc: DM; Rm: 34

BUS-180 Introduction to Bookkeeping **3 Units**
Not Transferrable
D8803 1/18-5/16 D Slagle
Lec: Tue, Thu from
05:40p-06:45p; Loc: DM;
Rm: 36; Lab: Tue, Thu from
06:55p-08:20p; Loc: DM; Rm: 36

BUS-35 Marketing and Social Media **4 Units**
Transfers to CSU
D8043 1/18-5/16 L McKendry
Distance Education: DHR from
12:00a-12:00a; Loc: ; Rm: ; Lec:
Mon from 05:40p-07:45p; Loc:
DM; Rm: 15
Hybrid

COMMUNICATION STUDIES

COMM-C1000 Introduction to Public Speaking **3 Units**
Transfers to UC/CSU
D8044 1/18-5/16 E Elizondo
Lec: Mon, Weds from
08:30a-09:55a; Loc: DM; Rm: 29

EARLY CHILDHOOD EDUCATION

ECE-5 The Child in the Family and in the Community **3 Units**
Transfers to CSU
D9142 1/18-5/16 P Freneau
Lec: Tue from 02:30p-05:40p;
Loc: ; Room:

ECE-7 Introduction to Early Childhood Curriculum **3 Units**
Transfers to CSU
D8046 1/18-5/16 P Freneau
Lec: Thu from 02:30p-04:35p;
Loc: DM; Rm: 36

EDUC-207 Getting Started With Computers **0 Units**
Not Transferrable
D9136 1/18-5/16 Staff
Lab: Tue, Thu from 09:30a-11:30a;
Loc: DM; Rm: 2
This class meets at the Del Norte Campus.

EDUCATION

EDUC-225 High School Equivalency/ GED Preparation **0 Units**
Not Transferrable
D9137 1/18-5/16 Staff
Lab: Mon, Weds from
06:00p-07:30p; Loc: DM; Rm: 2
This class meets at the Del Norte Campus.

ENGL-C1000 Academic Reading and Writing **4 Units**
Transfers to UC/CSU
D8982 1/18-5/16 K Fisette
Lec: Mon, Weds from
05:30p-07:35a; Loc: ; Room:

ENGLISH

ENGL-C1000 Academic Reading and Writing **4 Units**
Transfers to UC/CSU
D8983 1/18-5/16 K Fisette
Lec: Tue, Thu from 10:15a-12:10p;
Loc: ; Room:

ENGL-C1001 Critical Thinking and Writing **3 Units**
Transfers to UC/CSU
D8051 1/18-5/16 K Fisette
Lec: Mon, Weds from
02:30p-03:55p; Loc: DM; Rm: 34

ENVIRONMENTAL SCIENCE

ENVSC-10 Introduction to Environmental Science **4 Units**
Transfers to UC/CSU
D8052 1/18-5/16 N Decker
Lec: Mon, Weds from
10:05a-11:30a; Loc: DM; Rm: 34;
Lab: Weds from 12:30p-03:40p;
Loc: DM; Rm: 26

GEOLOGY

GEOL-1 Physical Geology with Lab **4 Units**
Transfers to UC/CSU
D8981 1/18-5/16 J Renner
Lec: Tue, Thu from 01:00p-02:25p;
Loc: DM; Rm: 15; Lab: Tue, Thu
from 02:35p-04:00p; Loc: DM;
Rm: 26

GENERAL STUDIES

GS-1 College Success **3 Units**
Transfers to CSU
D8053 2/18-5/16 Staff
Lec: Tue, Thu from 08:00a-10:05a;
Loc: DM; Rm: 29
This late start class begins 2/18/25.

GUIDANCE

GUID-143 Individualized Assessment and Academic Planning **0.5 Units**
Not Transferrable
D8518 1/18-5/16 D McArthur
Lec/Lab: DHR from
12:00a-12:00a; Loc: ; Room:

GUID-145 Applied Study Skills and Strategies **1 - 4 Units**
Not Transferrable
D8519 1/18-5/16 D McArthur
Lec/Lab: DHR from
12:00a-12:00a; Loc: ; Room:

GUID-146 Applied Study Skills & Strategies for English **1 - 4 Units**
Not Transferrable
D8522 1/18-5/16 D McArthur
Lec/Lab: DHR

GUID-147 Applied Study Skills and Strategies For Math **1 - 4 Units**
Not Transferrable
D8525 1/18-5/16 D McArthur
Lec/Lab: DHR

GUID-148 Applied Study Skills and Strategies for Science **1 - 4 Units**
Not Transferrable
D8528 1/18-5/16 D McArthur
Lec/Lab: DHR

NURSING

NURS-20 RN Transitional Concepts **3 Units**
Transfers to CSU
D8253 1/18-5/16 Staff
hybrid

PHYSICAL EDUCATION

PE-15 Empowerment Self Defense **1 Units**
Transfers to UC/CSU
D8927 3/11-4/6 C Slack
Lec/Lab: Fri from 04:00p-08:00p;
Loc: ; Rm: ; Distance Education:
Tue from 07:00p-09:00a; Loc:
; Rm: ; Lec/Lab: Sat, Sun from
09:00a-05:00p; Loc: ; Room:
This is a late-start class. The class will meet over Zoom on March 11th from 7pm-9pm. In-person class meetings will be April 4th from 4pm-8pm, and on April 5th and 6th from 9am-5pm. 22.5 total hours required.

PHILOSOPHY

PHIL-15 Religions of the World **3 Units**
Transfers to UC/CSU
D8057 1/18-5/16 P Freneau
Lec: Tue, Thu from 12:30p-01:55p;
Loc: DM; Rm: 36

PSYCHOLOGY

PSYC-C1000 Introduction to Psychology **3 Units**
Transfers to UC/CSU
D8059 1/18-5/16 P Mancus
Lec: Tue, Thu from 12:30p-01:55p;
Loc: DM; Rm: 29
Zero Cost Textbook

Klamath/Trinity Campus Face-To-Face Classes

SIGN LANGUAGE

SNLAN-1B 4 Units Elementary American Sign Language II

Transfers to UC/CSU
D8061 1/18-5/16 S Jackson
Lec: Mon, Weds from
03:30p-05:35p; Loc: DM; Rm: 2

SOCIOLOGY

SOC-1 3 Units Introduction to Sociology

Transfers to UC/CSU
D8062 1/18-5/16 P Mancus
Lec: Tue, Thu from
02:30p-03:55p; Loc: DM; Rm: 29
Low Cost Textbook

SOC-2 3 Units Social Problems

Transfers to UC/CSU
D8063 1/18-5/16 P Mancus
Lec: Tue, Thu from
05:40p-07:05p; Loc: DM; Rm: 29
Low Cost Textbook

STATISTICS

STAT-C1000 4 Units Introduction to Statistics

Transfers to UC/CSU
D8055 1/18-5/16 W Gill
Lec: Mon, Weds from
12:15p-02:20p; Loc: DM; Rm: 15

STAT-C1000 4 Units Introduction to Statistics

Transfers to UC/CSU
D8056 1/18-5/16 W Gill
Lec: Tue, Thu from
05:40p-07:45p; Loc: DM; Rm: 15

SOCIAL WORK AND HUMAN SERVICES

SWHS-2 3 Units Field Seminar in Social Work and Human Services

Transfers to CSU
D8064 1/18-5/16 Staff
Lec: Mon from 05:40p-08:50p;
Loc: DM; Rm: 36

SWHS-42 2 Units Supervised Occupational Work Experience

Transfers to CSU
D8065 1/18-5/16 Staff
Field Experience: DHR from
12:00a-12:00a; Loc: ; Room:

ADDICTION STUDIES

ADCT-18 3 Units Co-Occurring Disorders: Addictions and Mental Health

Transfers to CSU
K7612 1/18-5/16 S Bibona
Distance Education: Tue, Thu
from 02:50p-04:15p; Loc: HTEC;
Rm: 3
This TelePresence class meets on the Klamath-Trinity Instructional Site, and will be streamed from the host class and instructor in Eureka using interactive live video.

CONSTRUCTION TECHNOLOGY

CT-25 2 Units OSHA Construction Safety

Transfers to CSU
K8469 4/5-5/3 L Bechler
Lec: Sat from 09:00a-04:05p; Loc:
HTEC; Rm: 1

EARLY CHILDHOOD EDUCATION

ECE-5 3 Units The Child in the Family and in the Community

Transfers to CSU
K8587 1/18-5/16 M Knight
Lec: Tue from 05:15p-08:25p; Loc:
HTEC; Rm: 3

EDUCATION

EDUC-207 0 Units Getting Started With Computers

Not Transferrable
K9125 1/18-5/16 Staff
Lab: Mon, Weds from
02:00p-03:25p;
This class meets at the Klamath Trinity Branch Campus.

EDUC-225 0 Units High School Equivalency/ GED Preparation

Not Transferrable
K9126 1/18-5/16 Staff
Lab: Tue, Thu from 11:30a-12:55p
This class meets at the Klamath Trinity Branch Campus.

ENGLISH

ENGL-C1000 4 Units Academic Reading and Writing

Transfers to UC/CSU
K7817 1/18-5/16 L Gorman
Lec: Mon, Weds from
04:35p-06:40p; Loc: HTEC; Rm: 1

FORESTRY AND NATURAL RESOURCES

FNR-1 3 Units Introduction to Forestry and Natural Resources

Transfers to UC/CSU
K8880 10/4-5/16 Staff
Lec/Lab: Tue, Fri from
01:00p-01:50p; Loc: ; Rm: ; Lec/
Lab: Thu from 12:45p-02:10p;
This Dual Enrollment class is only open to Hoopa High School students.

GENERAL STUDIES

GS-1 3 Units College Success

Transfers to CSU
K8401 1/18-5/16 E Leach
Lec: Tue, Thu from 08:30a-09:55a;
Loc: HTEC; Rm: 1

HISTORY

HIST-9 3 Units US History Reconstruction to the Present

Transfers to UC/CSU
K7868 1/18-5/16 A Hoffmann
Lec: Tue from 12:00p-03:10p; Loc:
HTEC; Rm: 2

HUPA

HUPA-1B 4 Units Elementary Hupa 1B

Transfers to UC/CSU
K8456 1/18-5/16 D Ammon
Lec: Tue, Thu from 05:15p-07:20p;
Loc: HTEC; Rm: 1

NATIVE AMERICAN STUDIES

NAS-1 3 Units Introduction to Native American Studies

Transfers to UC/CSU
K8457 1/18-5/16 C Agee
Lec: Weds from 12:30p-03:40p;
Loc: HTEC; Rm: 3

PHILOSOPHY

PHIL-1 3 Units Critical Thinking

Transfers to UC/CSU
K7918 1/18-5/16 E Leach
Lec: Tue, Thu from 10:00a-11:25a;
Loc: HTEC; Rm: 1

PSYCHOLOGY

PSYC-C1000 3 Units Introduction to Psychology

Transfers to UC/CSU
K7993 1/18-5/16 Staff
Lec: Fri from 12:30p-03:40p;

STATISTICS

STAT-C1000 4 Units Introduction to Statistics

Transfers to UC/CSU
K7949 1/18-5/16 D Ammon
Lec: Tue, Thu from
03:00p-05:05p; Loc: HTEC; Rm: 1



EUREKA MAIN CAMPUS
7351 TOMPKINS HILL RD
EUREKA, CA 95501

[WWW.REDWOODS.EDU](http://www.redwoods.edu)

Public Notice Nondiscrimination:

College of the Redwoods does not discriminate on the basis of ethnicity, religion, age, gender, sexual orientation, color or disability in any of its programs or activities. College of the Redwoods is committed to providing reasonable accommodations for persons with disabilities. Upon request this publication will be made available in alternate formats.

Please Note:

This schedule of classes is published for informational purposes. Every effort is made to ensure its accuracy. However, the provisions of this schedule are not to be regarded as an irrevocable contract between the student and the college. The college reserves the right to change any provision or requirement at any time, taking precautions that such changes do not work hardship on students enrolled.

Did you know?

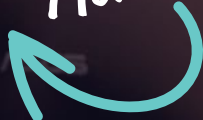
You can earn an **Online Degree** through **Cal Poly Humboldt** while staying connected at **College of the Redwoods**.

The **Satellite Education and Employment Development (SEED) Project** is here to help you achieve your goal of earning a bachelor's degree. Whether you're starting your journey at College of the Redwoods or already enrolled in a fully online university program, **SEED** is designed to support you every step of the way. Access CR student resources and stay rooted in your community by using CR as your "home" campus while you complete your bachelor's degree online with Cal Poly Humboldt.

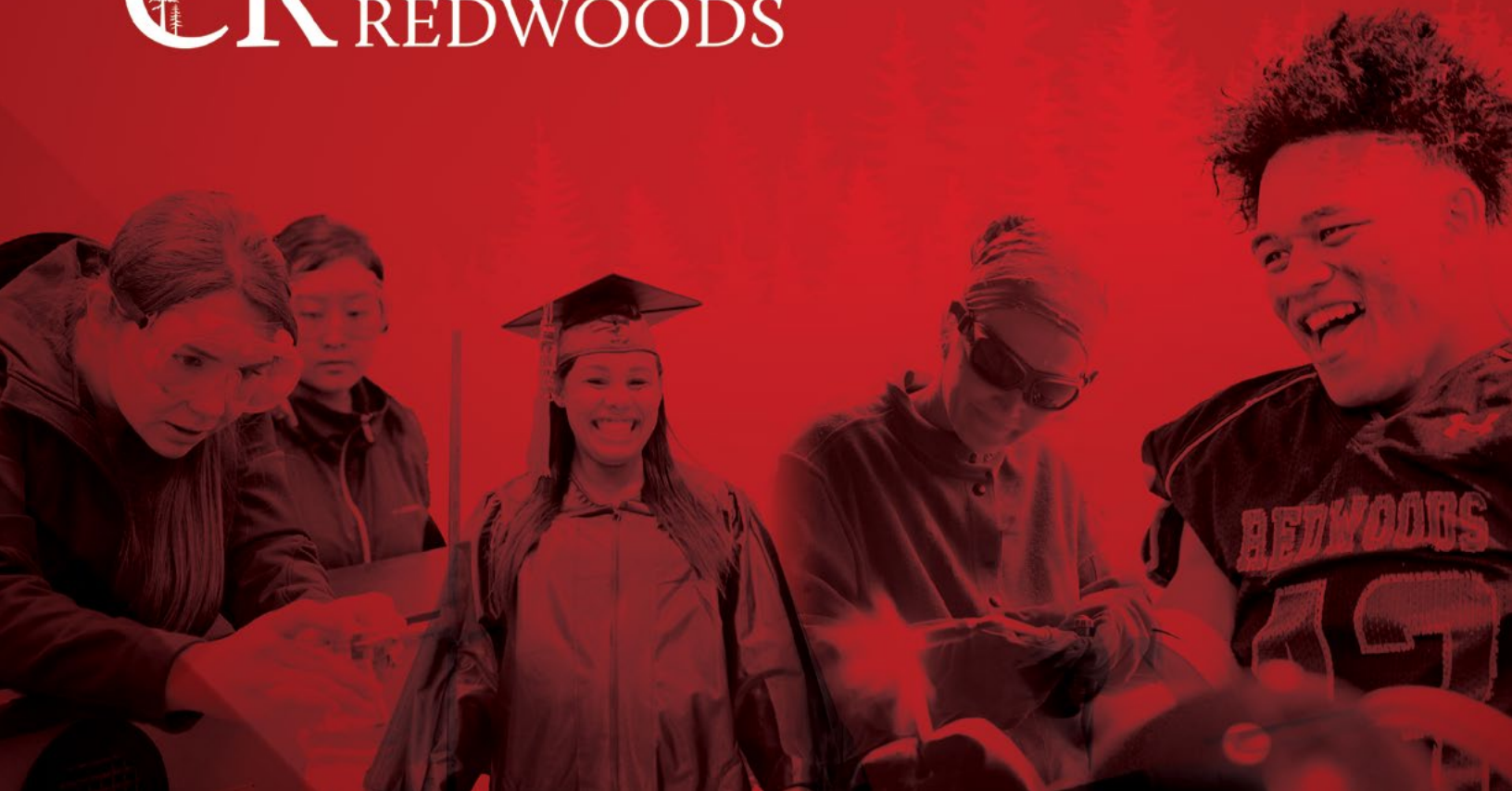
www.redwoods.edu/about/seed.php



Learn
More



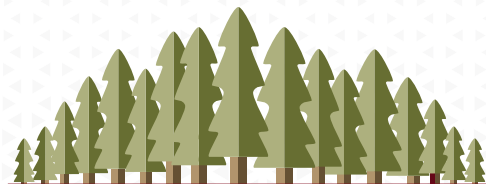
CR COLLEGE OF THE REDWOODS



Why College of the Redwoods?



College of the Redwoods is your community college.



CR faculty consistently score higher than the national average on student satisfaction surveys.



Small classes

Our small classes help foster a tight-knit supportive community.

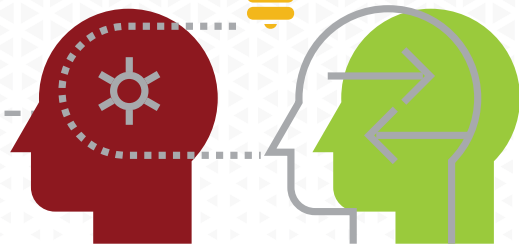
83%

of classes have fewer than 30 students.



Our Approach

Our faculty use an interactive, hands-on approach, teaching in small classes, with tailored instructional support. Our students are set-up for success.





A Smart Investment in Your Future

CR provides an affordable head start — whether it's towards a certificate, two year degree, or a degree for transfer to a four-year institution. For first-time, full-time students, CR offers free tuition for your first two years and most of our students pay just **\$43** a semester in fees and tuition.



We're affordable

The first two years are **FREE** for first-time, full-time students.



Annual fees/tuition

Table of Contents

● Get Started	5	● Student Services <i>Continued</i>	
How to Get Stared at CR	5	Veteran’s Resource Center	20
Financial Aid & Scholarships	6	Student Health Center.....	21
Academic Counseling & Advising.....	7	Child Development Center	21
● Academics	8	Learning Resource Center (LRC)	22
Course Modalities	8-9	Academic Support Center (ASC)	23
Associate Degrees for Transfer	10	Clubs	24
UC Transfer Pathways	11	Multicultural & Equity Center (MEC)	25
Career Education	12	Disabled Students Programs & Services (DSPS).....	26
Online Classes & Distance Education.....	13	On- Campus Housing.....	27
● Community Classes	14	CR Café & The Food Lab	27
Adult Education.....	14	● Athletics	28
Workforce & Community Education.....	15	Cap & Gown Program	29
● Student Services	16	● Human Resources	30
Welcome Center.....	17		
State & Federally-Funded Programs.....	18		
CalWORKS	19		
TRIO	19		
EOPS/CARE	19		
CR Basic Needs Center	20		

How to Get Started at CR



1. Apply Complete the CR Application at www.redwoods.edu/GetStarted
Use this application if you are new to CR or if you are a returning student but haven't taken classes in the past 12 months.



2. Begin Your Financial Aid Application Don't let a lack of funds keep you from reaching your goals. Go to www.redwoods.edu/FinancialAid/
Apply to fill out your FAFSA (Free Application for Federal Student Aid).



3. Set-Up Your CR Student Email After completing your application, you will receive an email that

will provide your initial login information to your new student email account. Log into your CR email as soon as possible. *All future* notifications from CR will be sent to your CR student email address.



4. Attend An Orientation
Complete our Online Orientation at www.redwoods.edu/Orientation



5. Meet With An Advisor Call or email to set up an in-person or online appointment.

CONTACT:

- ▶ **EMAIL** counseling@redwoods.edu
- ▶ **EUREKA CAMPUS COUNSELING/ADVISING** 707-476-4150
- ▶ **WELCOME CENTER** 707-476-4135
- ▶ **FINANCIAL AID** 707-476-4455
- ▶ **DEL NORTE** 707-465-2300
- ▶ **KLAMATH/TRINITY** 530-625-4821



6. Register for Classes Search and register for courses via WebAdvisor.redwoods.edu



Financial Aid & Scholarships

There's money to help with your tuition!

Each year federal, state, and local programs make \$15,000,000 in financial assistance available to CR students. Additionally, if you're a California residents and a first-time, full-time (12+ units) student, tuition is FREE for two years. For returning students, a large percentage qualify for a waiver of enrollment fees through the California College Promise Grant.

► **CHECK ELIGIBILITY:** www.redwoods.edu/financialaid; 707-476-4182; finaid@redwoods.edu

College Of The Redwoods Foundation 501(c)(3)

The mission of the College of the Redwoods Foundation is to support the Redwoods Community College District by establishing partnerships and collaborations that benefit students, local businesses, and the community. The Foundation's focus is on generating resources to promote student enrollment, student success, economic development, community health, and equitable opportunity. Every year, thanks to the generosity of our donors, the Foundation provides \$135,000 in scholarships to CR students.

► **TO SUPPORT THE IMPACT OF THE COLLEGE OF THE REDWOODS FOUNDATION:** www.redwoods.edu/foundation



Double Your Earnings



Students who earn a California community college degree or certificate nearly **double** their earnings within 3 years.

– *Fast Facts 2020*
Community College League of California

Academic Counseling & Advising

The counseling and advising team is here to make sure you have clear expectations and a roadmap to your educational goals. We can walk you through term-by-term schedules, help you choose programs that make sense and clarify graduation requirements.

When you're ready to move on, we can also tell you all you need to know about transferring to a four-year college or university. If Cal Poly Humboldt (CPH) is your destination, you can visit our dedicated CR/Cal Poly Humboldt transfer specialist.

We also provide career counseling, online resources and job announcements to support your transition from classroom to career.

- ▶ **EUREKA** 707-476-4150
- ▶ **DEL NORTE** 707-465-2300
- ▶ **EMAIL** counseling@redwoods.edu



All of our programs now offer **FACE-TO-FACE** and **ONLINE** options

WHICH PATH IS RIGHT FOR YOU?

SOMETHING IN BETWEEN?

WHY NOT BOTH?

YES!

NOT REALLY...

Are you looking for the traditional college experience?

Can you come to campus several days a week?

Do you want more real-time access to professors?


YES!

No childcare?

Full-time job?

Live too far away?

Online learning may be the answer.



FACE-TO-FACE

- Live interaction with professors and peers.
- Network and enjoy real-time questions, answers, and discussion.
- Better for students who have time available both day and night either for classes or studying.
- Also for those who can travel to campus easily.

ONLINE

- Self-motivated students who prefer not having to commute to campus may prefer a fully online schedule.
- Professors are available to answer questions during class time or office hours.
- Not as much peer-to-peer interaction.

HYBRID CLASSES

- Both online and in-person components.
- Your lectures are online but you'll travel to campus for labs one to several times a semester.

HYBRID SCHEDULES

- Created by you.
- Both online and in-person classes.
- The most flexible option for students.

Nontraditional Students Welcome!

Have you taken a break from school to pursue other opportunities? Our flexible schedule is ideal for students who have lives outside of CR - jobs, family, or other obligations. We have many nontraditional students (defined as those over 25) and we value all voices and walks of life.

40%

of CCC Students are first generation.



Associate Degrees for Transfer

Your first step on the path to a CSU



If you're planning to transfer to a California State University (CSU), CR makes it easy by offering eighteen Associate Degrees for Transfer that guarantee admission to the CSU system.

The best part? If you earn one of these degrees from CR, you enter the CSU system with junior standing and only need sixty more units to complete a bachelor's degree.

Transfer Degrees Offered

- Administration of Justice
- Agriculture, Plant Science
- Anthropology
- Art
- Biology
- Business Administration
- Communication Studies
- Early Childhood Education
- English
- Geology
- History
- Kinesiology
- Mathematics
- Philosophy
- Physics
- Political Science
- Psychology
- Social Justice
- Sociology

FIND MORE INFORMATION ABOUT
TRANSFERRING WITH AN AA-T OR AS-T
AT ► www.adegreewithaguarantee.com



**A Degree With
A Guarantee.com**SM
Associate Degree for Transfer

UC Transfer Pathways

Your map into 21 of UC's Most Popular Majors

Did you know? Six University of California (UC) campuses offer the Transfer Admission Guarantee (TAG) program, ensuring admissions for California Community College students who meet specific requirements.

- Davis
- Irvine
- Merced
- Riverside
- Santa Barbara
- Santa Cruz

FOR MORE INFORMATION, VISIT

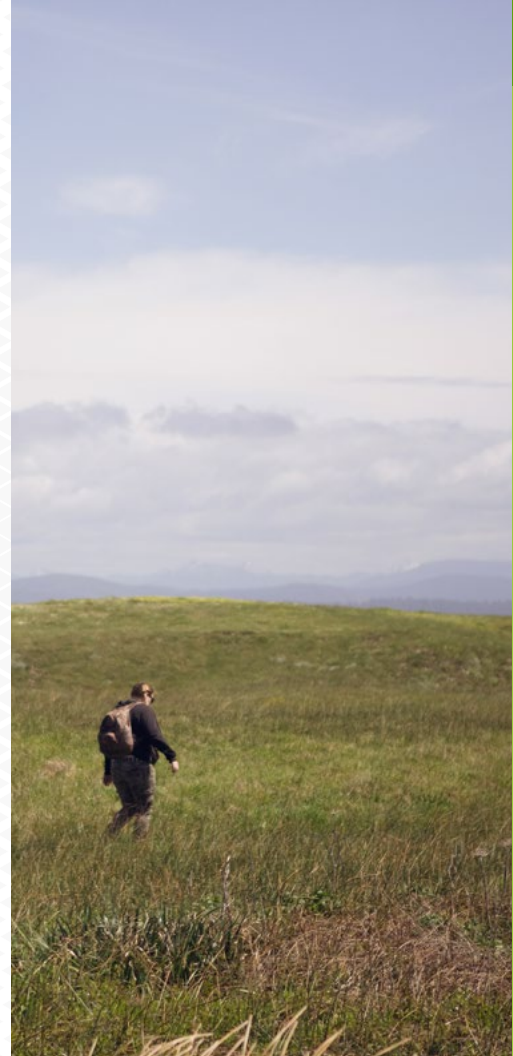
▶ admission.universityofcalifornia.edu/transfer

We also host TAG and UC workshops and host UC representatives on our Eureka campus throughout the year. If you're hoping to transfer to a UC, our advisors are here to help!

51% California State University

29% University of California

Percentage of Public Institution Graduates Who Started at a California Community College



Career Education – *Get Hired!*

CR's Career Education programs ready you for today's ever-changing marketplace. That's why local companies hire students directly from our classrooms - they know our students are well prepared with the precise skills and knowledge needed to meet their evolving demands.

Areas of Career Education

- Addiction Studies
- Administration of Justice & Police Academy
- Agriculture
- Automotive Technology
- Computer Information Systems
- Construction Technology & Millworks
- Dental Assisting
- Early Childhood Education
- Electrician Training & Solar Technology
- Forestry & Natural Resources
- Nursing, EMT & Paramedics
- Manufacturing, Welding
- Social Work & Human Services

Please ask for our Career Education booklet to explore all of our CE programs.



Online Classes & Distance Education (DE)

We welcome you to the College of the Redwoods community, even from a distance.

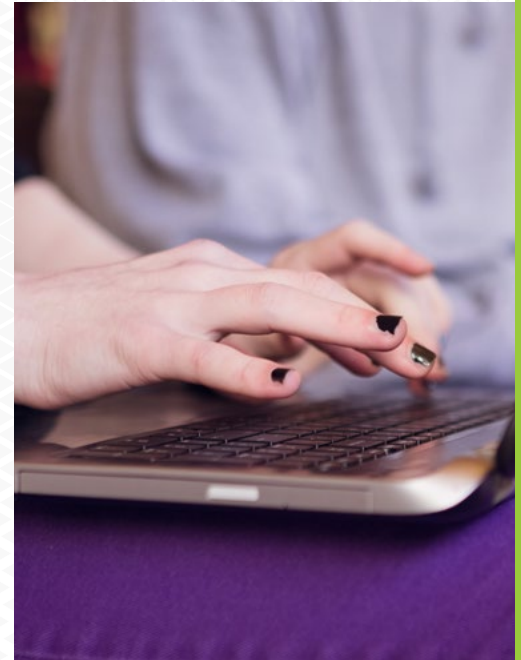
Learn from anywhere, flexibly, by taking CR courses online. They have the same course objectives, outcomes, and curriculum as in-person sections and are taught by instructors deeply invested in their students' success. Our teachers, trained to facilitate quality online learning experiences, use many different methods to create an exciting, interactive learning environment.

We offer numerous quality online classes every semester to fit your schedule and help you finish faster. An ever-increasing number of certificates and degrees can be earned fully online, or you can take a mix of in-person and online classes.

FOR MORE INFORMATION ► <https://www.redwoods.edu/online>

TelePresence

We also have interactive two-way streaming audio and video instruction between the main campus in Eureka and the Del Norte and Klamath-Trinity educational centers allowing students from all three locations to “virtually” join in class together.



Adult Education

CR's Adult Education program offers free classes and programs at numerous locations throughout Humboldt and Del Norte Counties. Programs are designed to increase educational attainment and career success by providing the preparation and skills needed for employment, continuing education, and personal growth.

- English as a Second Language (ESL)
- Living Skills for People with Disabilities
- American Sign Language (ASL)
- GED/HiSET Preparation
- College Preparation
- Workforce Readiness
- Medical Assisting

FOR MORE INFORMATION

► www.redwoods.edu/adulted

We aim to prepare students with the foundational education needed for a seamless transition to community college or gainful employment.



Workforce & Community Education (WCE)

Our fee-based, not-for-credit classes are offered throughout Humboldt and Del Norte Counties and are designed to develop professional skills, enhance career opportunities, enrich personal knowledge and promote cultural and academic growth. We partner with local individuals, employers and organizations to build courses around the needs of our community.

Recent course offerings include:

- Beginning & Intermediate Bookkeeping
- Medical Assisting
- Notary
- Phlebotomy
- Real Estate
- Truck Driving
- Wildland Fire School

FOR MORE INFORMATION

► **WEB** redwoods.edu/communityed

► **PHONE** 707-476-4500

► **FAX** 707-443-3417

► **EMAIL** ace@redwoods.edu





CR wants you to succeed!

By taking advantage of a wide variety of learning opportunities from the very beginning of your college career, you can increase your chances of success. Following are the many support services and activities available to you at CR.

**Please note: All services listed are available on our Eureka Campus. For Del Norte and Klamath-Trinity, contact Student Services for more information.*

- ▶ **WEB** www.redwoods.edu/services
- ▶ **DEL NORTE** 707-465-2380
- ▶ **KLAMATH-TRINITY** 530-625-4821

EUREKA CAMPUS

Welcome Center

If you have questions about admissions, registration, financial aid, advising or other student services, the Welcome Center should be your first stop. We are here to assist you in navigating the College's infrastructure. Think of us as the information hub pointing you in the right direction.

The center is located with the Counseling and Advising Center in the administration building.



Federally & State-Funded Student Services

There are several state-funded services aimed at helping disadvantaged students succeed at CR. Depending on the program, and your eligibility, you could receive:

- Money for books & supplies
- Transportation assistance
- Textbook lending library
- Priority registration
- Career, academic & personal counseling
- Tutoring
- Work study opportunities
- Transfer assistance/fee waiver
- Financial aid assistance
- Free GED testing
- Free printing
- Free calculator/laptop loans
- Free graduation cap & gown



CalWORKs

The California Work Opportunities and Responsibility to Kids (CalWORKs) program provides education and training to parents who are recipients of Cash Aid/TANF (Temporary Assistance for Needy Families).

FOR MORE INFORMATION ► redwoods.edu/calworks

EOPS

Extended Opportunity Programs and Services (EOPS) is a state-funded program designed to provide financial assistance, support and encouragement for eligible income disadvantaged students.

FOR MORE INFORMATION ► redwoods.edu/eops

CARE

If you're a single parent, Cooperative Agencies Resources for Education (CARE) can offer even more help in achieving your academic and career goals.

TO APPLY ► redwoods.edu/eops

TRiO

The TRiO Student Success Program can help if you're:

- A first-generation college student, or
- A financially-limited college student, or
- A student with a documented disability

TO CHECK ELIGIBILITY ► redwoods.edu/trio





Basic Needs Center

The CR Basic Needs Center seeks to decrease stigma and empower students to achieve academic success through increasing access to services and resources in a caring community. They can provide application assistance and information on Cal Fresh and Medi-Cal, access to the campus Food and Clothing Pantry, and referrals to on and off campus programs.

Hygiene products like shampoo and toothpaste, towels and a laundry service are also available and students have access to showers in the PE building from 7AM - 7PM and can request short or long-term use of lockers.

Veteran's Resource Center (VRC)

If you're a Veteran, we're here to make sure your transition to student life is successful and support you in your academic endeavors. Veterans, Active Duty and Reserve/National Guard service members and dependents are welcome in the VRC lounge/study area where we also help with advising and matriculation, applying for veteran's education and health care benefits, referrals, and connections to community Veteran resources.

FOR MORE INFORMATION ► www.redwoods.edu/vets



Student Health Center

CR's Student Health Center is staffed by a Registered Nurse or a Family Nurse Practitioner while classes are in session. The Center provides minor medical care for illnesses and injuries, health promotion education, immunizations and testing, as well as examinations required for specific vocational training programs. Local community clinics are available for acute care and local hospitals for emergency care.

CR is also partnered with TimelyCare, a telehealth program that provides 24/7 mental virtual health care from anywhere in the United States, with no cost to students and Kiira Health, which offers a virtual healthcare clinic for college women.



Child Development Center (CDC)

The CDC provides education-based childcare for children eighteen months to five years of age. The program offers sliding scale fees and is open to students, staff and the community.

Space fills fast so apply ASAP! ► www.redwoods.edu/cdc



Learning Resource Center (LRC)

The Eureka Campus library offers a physical collection of more than 65,000 books, video, periodicals, and other materials. Many of the textbooks and assigned readings for classes are available in the Library's Reserve collection.

The Library catalog and Electronic collections are accessible district-wide and provide access to millions of newspaper, magazine, and journal articles, in addition to other college-level research resources.

Other services in the LRC

- Laptop Lending Library
- Library Computers for Student Use
- Free Textbooks
- Textbook Reserves
- Printing Services
- Student Tech Help Desk



Academic Support Center (ASC)



Conveniently located in the library, the ASC helps students reach their educational goals by developing their academic skills and encouraging them to become independent learners through our tutoring and testing services.

The ASC also offers

- Computers (with internet access) and printers
- Access to course software
- Textbooks, solution manuals and other reference materials



Clubs

CR offers a variety of clubs, organized by students, to provide opportunities for social interaction and the exchange of ideas.

Current and former clubs include

- Agricultural Club
- California Students for Sustainability Coalition
- Chess Club
- Club TRiO
- College Democrats
- Digital Arts and Media Club
- Forestry and Natural Resources Club
- French Club
- Music Appreciation Club
- Sociology Club
- Solid Rock Bible Club
- STEM Club

MORE INFORMATION ► www.redwoods.edu/ascr/orgs



Multicultural & Equity Center (MEC)

The MEC is a dynamic and inclusive place that supports all students in their academic and personal journeys at the college. We do this by creating community, home away from home, and a safe place for cultural expression, cross-cultural learning, access to college and dignity resources, and social justice work opportunities. The MEC is committed to retention and student success by offering activities related to leadership development, student connectedness and student equity. We are a student-centered program that fosters respect for all people.

Clubs housed in the Center include

- Asian/Pacific Islander Student Club
- Black Student Union (BSU)
- Latinx Student Club
- Native Student Club
- Queer Student Union (QSU)
- Redwood's 180 Bible Club

MORE INFORMATION ► www.redwoods.edu/ascr/orgs



Disability Services & Programs for Students (DSPS)

DSPS strives to eliminate educational barriers unique to students with disabilities. We provide learning support and pathways to success, empower self-advocacy, and ensure equity, equal rights and access under the law.

Services may include

- Advising
- Alternate format of printed materials
- Assistive computers and related equipment
- Closed-Circuit Television (enlarges printed material for viewing)
- Liaison and referral to resources on and off Campus
- Medical parking
- On-Campus transportation
- Priority registration
- Readers/scribes
- Sign language interpreters
- Tape recorders
- Testing accommodations



The LIGHT Center provides individual and small group instruction for students needing academic assistance. Classes address difficulties in mathematical concepts, reading comprehension, writing skills and computer basics.

Adaptive PE courses

Adaptive PE courses provide education to meet fitness needs for students with disabilities, in a weight room environment, using cardiovascular, resistive, strengthening and flexibility exercises.

FOR MORE INFORMATION ► www.redwoods.edu/dsps

On-Campus Housing

If you'd like to live away from home in a small, friendly community, consider living in CR's on-campus dorms.

The two dorms house up to 150 students from diverse backgrounds and nationalities.

Staff are available to help navigate college resources and to help make your stay within the halls as positive as possible. You'll have evening access to the gym, on site laundry facilities, free admission to CR events and a 5-minute walk to classes.

CR Café & The Food Lab

The Campus Café is open for breakfast, lunch, and dinner serving a wide variety of cuisines and using fresh ingredients from our Shively Sustainable Farm. There is also a convenience store located in the café where you can buy drinks, snacks, and sundries.



Redwoods Strong

College of the Redwoods participates in 13 team sports in the Golden Valley, Pacific 7 and Big 8 conferences.

Athletic and recreation facilities include a gymnasium, fitness center and weight room, a field house with basketball court, baseball and softball fields, football/soccer field, tennis courts and running track.

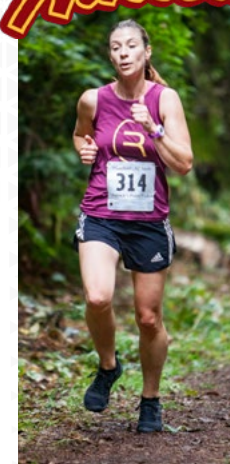
CR Intercollegiate Sports

Women: Basketball, Cross Country, Soccer, Softball, Track, Volleyball, Women's Tennis

Men: Baseball, Basketball, Cross Country, Football, Soccer, Track

FOR SCHEDULES AND MORE INFORMATION

▶ www.redwoods.edu/sports



The Cap and Gown Program

Cap and Gown is an academic support program specifically designed to help student athletes succeed academically at CR. It provides a mandatory additional six hours per week of study including tutoring in both English and Math and a free, non-credit Guidance course.

Statistics have consistently shown the success of the program.

2019-2020:

Retention Rates:

Student Athletes 96%, District Average 92%

Academic Success (students earn a C or better):

Student Athletes 80%, District Average 78%



“ We are letting our student-athletes down if we allow them to believe that majoring in eligibility is an acceptable academic goal. ”

Matthew
McCann,
Ph.D.
Athletic
Counselor



Join our Community

The same things that make College of the Redwoods a great place to study also make it a great place to teach or work. We're always looking for new talent and associate faculty.

For a listing of available opportunities, visit

► www.redwoods.edu/hr



Small classes

Our small classes help foster a tight-knit supportive community.

83%

of classes have fewer than 30 students.



What are you waiting for?



We believe your education is about more than just the classroom; it's about your entire experience.

Whether you're looking to transfer to a 4-year university, gain skills for a career, or just discover more about what interests you, we can help. Explore your options at College of the Redwoods.



Be the next CR success story!

Apply Now at www.redwoods/GetStarted
or call (707) 476-4200





CR COLLEGE OF THE REDWOODS

Published & Produced by College of the Redwoods | Communications & Marketing
7351 Tompkins Hill Road Eureka, CA 95501-9300

Public Notice - Nondiscrimination: College of the Redwoods does not discriminate on the basis of ethnicity, religion, age, gender, sexual orientation, color or disability in any of its programs or activities. College of the Redwoods is committed to providing reasonable accommodations for persons with disabilities.

CR COLLEGE OF THE REDWOODS

